

Benchmark

Benchmark	FTSE World Index
Sector	ABI Global Equities

Identification Codes

Sedol Code	B02SQY7
Mex Code	PUINTE
Isin Code	GB00B02SQY77
Citi Code	ILE8

Fund Overview

Bid (25/01/2021)	2864.60
Offer (25/01/2021)	3015.40
Fund size (30/11/2020)	£252.02m
Underlying Fund size	£257.03m
Number of holdings	1470
Launch date	31/08/2004

Fund Charges

Annual Management Charge (AMC)	1.00%
Further Costs	0.00%
Yearly Total	1.00%

Aims

Objective: The investment strategy of the fund is to provide long term capital growth by investing mainly in a spread of equity markets throughout the world, predominantly through collectives managed by M&G, Eastspring and PPMA.

Performance



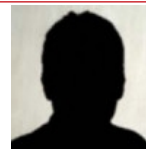
Discrete performance - to last month end

	31/12/15 to 31/12/16	31/12/16 to 31/12/17	31/12/17 to 31/12/18	31/12/18 to 31/12/19	31/12/19 to 31/12/20
Fund	27.9%	13.8%	-6.8%	17.8%	3.2%
Sector	22.9%	13.3%	-6.6%	21.1%	9.6%
Rank	182/763	269/787	372/797	694/815	591/824
Quartile	1	2	2	4	3

Annualised performance

	Annualised		
	3 Years to 31/12/20	5 Years to 31/12/20	10 Years to 31/12/20
Fund	4.3%	10.5%	9.3%
Sector	7.4%	11.5%	8.9%
Rank	585/798	448/763	237/576
Quartile	3	3	2

Fund Managers



Name: M&G Treasury & Investment Office
 Manager of the underlying fund for: 6 years, 1 months

Ratings

FE Crown



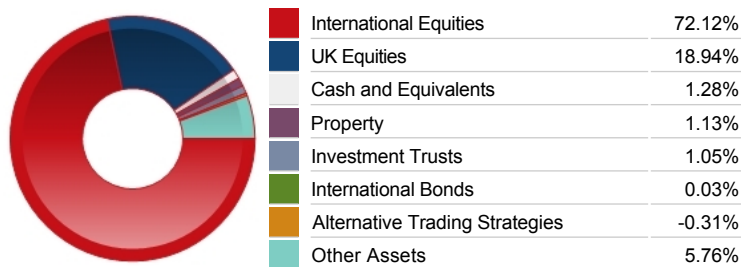
Important Information

- Because of changes in exchange rates the value of your investment, as well as any money you take from it, can go down as well as up.
- Some funds may invest in 'underlying' funds or other investment vehicles. The performance of our fund, compared to what it's invested in won't be exactly the same. That can be due to additional charges, cash management (needed to help people to enter and leave our fund when they want), tax and the timing of investments (this is known as a fund's dealing cycle, it varies between managers and can be several days).
- Source of portfolio data: Broadridge. Source of performance data: FE fundinfo. We can't predict the future. Past performance isn't a guide to future performance. The figures shown are intended only to demonstrate performance history of the fund, after allowing for the impact of fund charges and further costs, but take no account of product charges, or any Annual Management Charge paid for by the deduction of units. Charges and further costs may vary in the future and may be higher than they are now. Fund performance is based upon the movement of the daily price and is shown as total return in GBP with gross income reinvested. The value of your investment can go down as well as up so you might get back less than you put in.
- This factsheet is for information purposes only. If there is information or terminology included that you would like to discuss, then please contact an adviser. Investors should refer to their policy documentation and supporting brochures for fund availability, investment strategy, any product information and charges. Every care has been taken in populating this output, however it must be appreciated that neither Broadridge, Prudential nor their sources guarantee the accuracy, adequacy or completeness of this information or make any warranties regarding results from its usage.

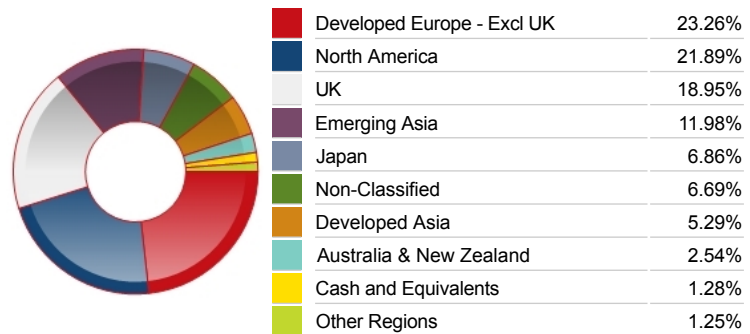
Top 10 Holdings

Name	% Weight	Sector	Country
1 SAMSUNG ELECTRONICS CO	1.63%	Technology Hardware & Equipment	South Korea
2 APPLE INC	1.46%	Technology Hardware & Equipment	United States
3 TAIWAN SEMICONDUCTOR MANUFACTURING	1.42%	Technology Hardware & Equipment	Taiwan
4 TENCENT HLDGS LTD	1.29%	Software & Computer Services	Hong Kong
5 ALIBABA GROUP HLDG LTD	1.25%	Retailers	China
6 MICROSOFT CORP	1.18%	Software & Computer Services	United States
7 AMAZON.COM INC	1.10%	Retailers	United States
8 NOVARTIS AG	0.95%	Pharmaceuticals & Biotechnology	Switzerland
9 NESTLE SA	0.84%	Food Producers	Switzerland
10 TOTAL SE	0.78%	Non-Renewable Energy	France

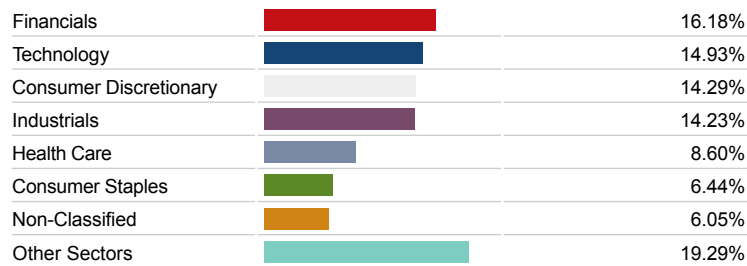
Asset Allocation



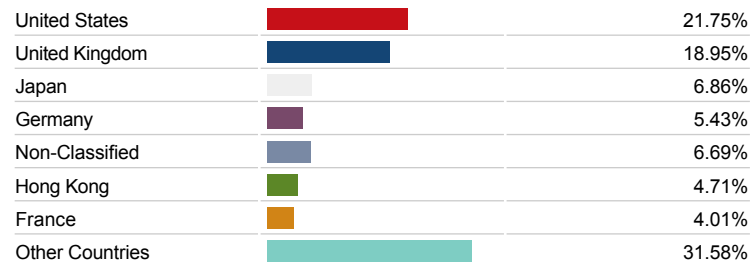
Regional Allocation



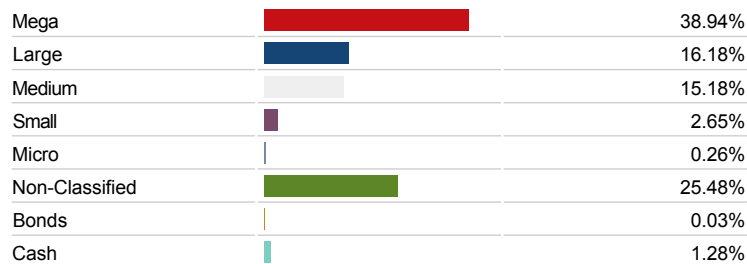
Equity Sector Breakdown



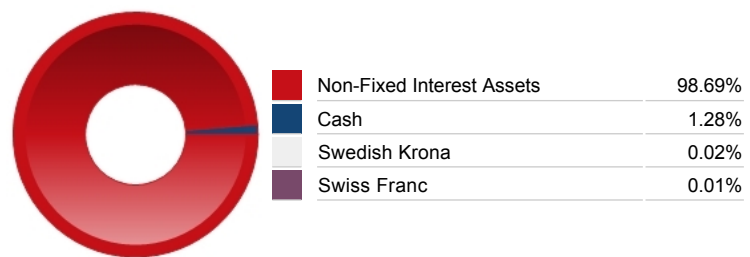
Top Country Breakdown



Breakdown By Market Cap (%)



Fixed Interest Currencies



Important Information

- Because of changes in exchange rates the value of your investment, as well as any money you take from it, can go down as well as up.
- The Industry Classification Benchmark is a product of FTSE International Limited and has been licensed for use.
- "Prudential" is a trading name of The Prudential Assurance Company Limited, which is registered in England and Wales. Registered office at 10 Fenchurch Avenue, London EC3M 5AG. Registered number 15454. Authorised by the Prudential Regulation Authority and regulated by the Financial Conduct Authority and the Prudential Regulation Authority.