

Benchmark

Benchmark	MSCI Emerging Markets Index
Sector	ABI Global Emerging Markets Equities

Identification Codes

Sedol Code	BJFLFM7
Mex Code	PUEMGH
Isin Code	GB00BJFLFM75
Citi Code	KF9R

Fund Overview

Bid (02/05/2024)	144.00
Offer (02/05/2024)	151.60
Fund size (31/03/2024)	£4.27m
Number of holdings	2756
Launch date	16/05/2014

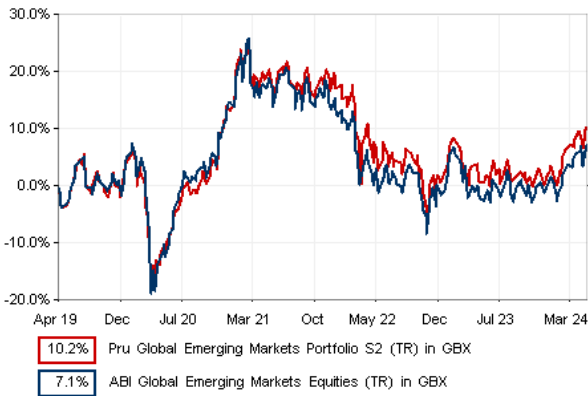
Fund Charges

Annual Management Charge (AMC)	1.65%
Further Costs	0.12%
Yearly Total	1.77%

Aims

Objective: This Portfolio aims to achieve long-term total return (the combination of income and growth of capital). It is a managed portfolio investing in Collective Investment Schemes in order to provide equity exposure to emerging stock markets worldwide or companies with significant activities in emerging markets.

Performance



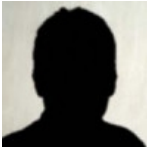
Discrete performance - to last month end

	30/04/19 to 30/04/20	30/04/20 to 30/04/21	30/04/21 to 30/04/22	30/04/22 to 30/04/23	30/04/23 to 30/04/24
Fund	-10.0%	32.7%	-10.0%	-5.8%	8.8%
Sector	-10.3%	31.9%	-13.4%	-4.5%	9.3%
Rank	43/69	40/69	32/69	47/69	43/69
Quartile	3	3	2	3	3

Annualised performance

	Annualised		
	3 Years to 30/04/24	5 Years to 30/04/24	10 Years to 30/04/24
Fund	-2.6%	2.0%	n/a
Sector	-3.3%	1.4%	4.7%
Rank	38/69	40/69	n/a
Quartile	3	3	n/a

Fund Managers



Name: M&G Treasury & Investment Office
Manager for: 9 years, 4 months

Important Information

- Because of changes in exchange rates the value of your investment, as well as any money you take from it, can go down as well as up.
- Some funds may invest in 'underlying' funds or other investment vehicles. The performance of our fund, compared to what it's invested in won't be exactly the same. That can be due to additional charges, cash management (needed to help people to enter and leave our fund when they want), tax and the timing of investments (this is known as a fund's dealing cycle, it varies between managers and can be several days).
- Source of portfolio data: Broadridge. Source of performance data: FE fundinfo. We can't predict the future. Past performance isn't a guide to future performance. The figures shown are intended only to demonstrate performance history of the fund, after allowing for the impact of fund charges and further costs, but take no account of product charges, or any Annual Management Charge paid for by the deduction of units. Charges and further costs may vary in the future and may be higher than they are now. Fund performance is based upon the movement of the daily price and is shown as total return in GBP with net income reinvested. The value of your investment can go down as well as up so you might get back less than you put in.
- This factsheet is for information purposes only. If there is information or terminology included that you would like to discuss, then please contact an adviser. Investors should refer to their policy documentation and supporting brochures for fund availability, investment strategy, any product information and charges. Every care has been taken in populating this output, however it must be appreciated that neither Broadridge, Prudential nor their sources guarantee the accuracy, adequacy or completeness of this information or make any warranties regarding results from its usage.

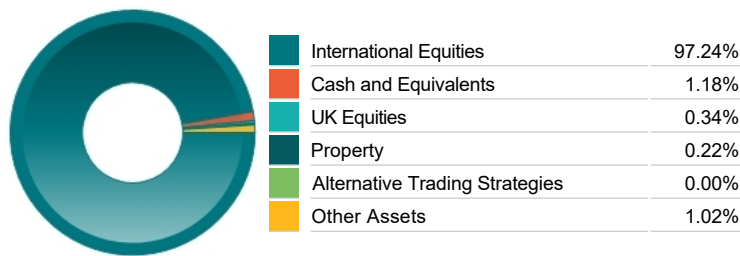
Fund Holdings

Name	% Weight	Sector	Country
1 M&G (1) MFS Global Emerging Markets Equity Class GBPZ2A	49.94%	Managed Funds	Managed Funds
2 M&G (1) GSAM Global Emerging Markets Equity Class GBPZ2A	34.96%	Managed Funds	Managed Funds
3 M&G (1) Lazard Global Emerging Markets Equity Class GBPZ2A	14.83%	Managed Funds	Managed Funds
4 M&G (1) Invesco Global Emerging Markets Equity Class GBPZ2A	0.29%	Managed Funds	Managed Funds

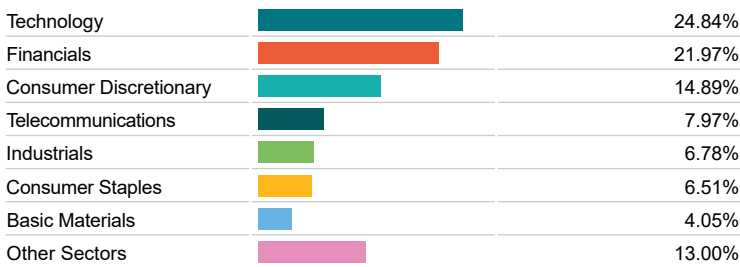
Top 10 Holdings

Name	% Weight	Sector	Country
1 SAMSUNG ELECTRONICS CO. LTD	5.23%	Telecommunications Equipment	South Korea
2 TAIWAN SEMICONDUCTOR MANUFACTURING COMPANY LIMITED	4.42%	Technology Hardware & Equipment	United States
3 TAIWAN SEMICONDUCTOR MANUFACTURING COMPANY LIMITED	4.07%	Technology Hardware & Equipment	Taiwan
4 TENCENT HOLDINGS LIMITED	3.96%	Software & Computer Services	China
5 ALIBABA GROUP HOLDING LIMITED	2.21%	Retailers	China
6 HON HAI PRECISION INDUSTRY	1.48%	Technology Hardware & Equipment	Taiwan
7 KB FINANCIAL GROUP INC	1.43%	Banks	South Korea
8 MEDIATEK	1.18%	Technology Hardware & Equipment	Taiwan
9 CHINA MERCHANTS BANK CO.	1.11%	Banks	China
10 KWEICHOW MOUTAI GROUP CO. LTD	1.10%	Beverages	China

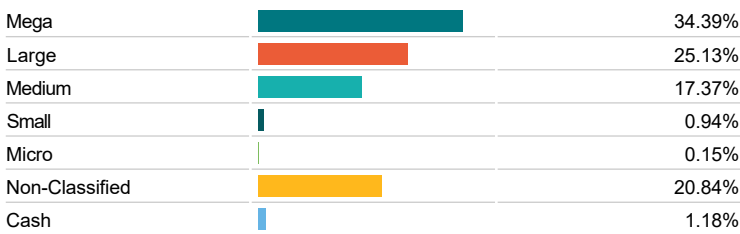
Asset Allocation



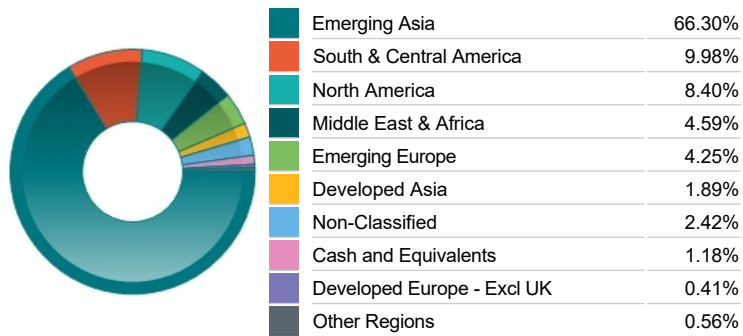
Sector Breakdown



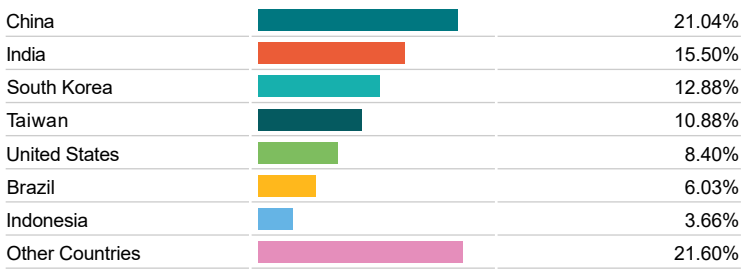
Breakdown By Market Cap (%)



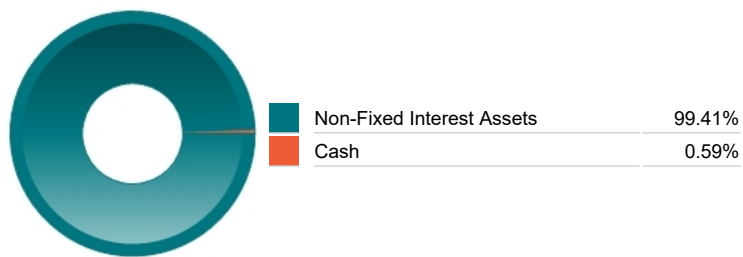
Regional Allocation



Top Country Breakdown



Fixed Interest Currencies



Important Information

- Because of changes in exchange rates the value of your investment, as well as any money you take from it, can go down as well as up.
- The Industry Classification Benchmark is a product of FTSE International Limited and has been licensed for use.
- "Prudential" is a trading name of The Prudential Assurance Company Limited, which is registered in England and Wales. Registered office at 10 Fenchurch Avenue, London EC3M 5AG. Registered number 15454. Authorised by the Prudential Regulation Authority and regulated by the Financial Conduct Authority and the Prudential Regulation Authority.