

Benchmark

Benchmark	IA Flexible Investment Sector
ABI Sector	Flexible Investment

Identification Codes

Sedol Code	3163438
Mex Code	VNPM3
Isin Code	GB0031634388
Citi Code	PW94

Fund Overview

Bid (15/04/2024)	310.50
Offer (15/04/2024)	310.50
Fund size (29/02/2024)	£20.13m
Underlying Fund size	£594.38m
Number of holdings	2809
Launch date	20/05/2002

Fund Charges

Annual Management Charge (AMC)	1.65%
Further Costs	0.33%
<b>Yearly Total</b>	<b>1.98%</b>

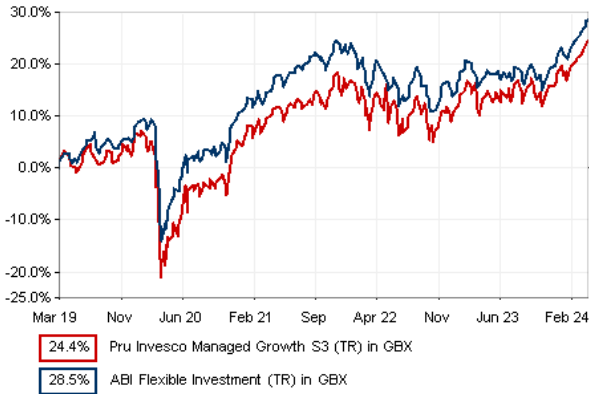
Aims

Objective: The investment strategy of the fund is to purchase units in the Invesco Managed Growth Fund (UK) - the underlying fund.

Underlying Fund Objective: The fund aims to achieve long-term (5 years plus) capital growth. The fund invests at least 80% of its assets in collective investment schemes (including funds managed by the Invesco Group) which invest in a broad range of assets including shares or other equity related securities and corporate and government debt securities (including investment grade, non-investment grade and unrated).

The Fund may use derivatives (complex instruments) to manage the Fund more efficiently, with the aim of reducing risk, reducing costs and/or generating additional capital or income. The Fund invests in collective investment schemes (including funds managed by the Invesco group) which may use derivatives with the aim of reducing risk, reducing costs or for investment purposes to manage the fund more efficiently.

Performance



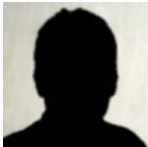
Discrete performance - to last month end

	31/03/19 to 31/03/20	31/03/20 to 31/03/21	31/03/21 to 31/03/22	31/03/22 to 31/03/23	31/03/23 to 31/03/24
Fund	-16.6%	31.2%	4.6%	-1.0%	9.7%
Sector	-10.6%	28.4%	5.3%	-3.0%	9.7%
Rank	123/135	49/137	77/137	42/137	81/137
Quartile	4	2	3	2	3

Annualised performance

	3 Years to 31/03/24	5 Years to 31/03/24	10 Years to 31/03/24
Fund	4.4%	4.5%	5.3%
Sector	3.9%	5.1%	5.5%
Rank	66/137	94/135	84/123
Quartile	2	3	3

Fund Managers



Name:	Georgina Taylor	David Aujla
Manager of the underlying fund for:	0 years, 6 months	0 years, 11 months

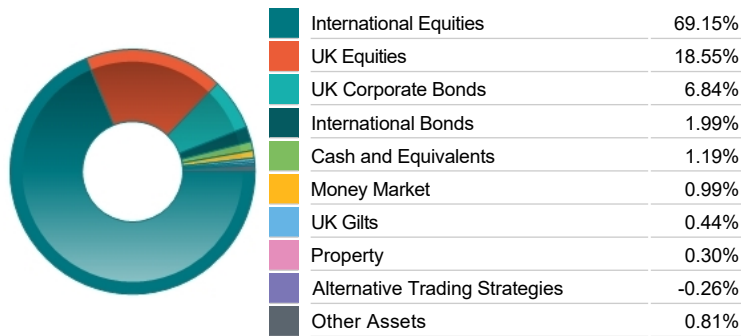
Important Information

- Because of changes in exchange rates the value of your investment, as well as any money you take from it, can go down as well as up.
- Some funds may invest in 'underlying' funds or other investment vehicles. The performance of our fund, compared to what it's invested in won't be exactly the same. That can be due to additional charges, cash management (needed to help people to enter and leave our fund when they want), tax and the timing of investments (this is known as a fund's dealing cycle, it varies between managers and can be several days).
- Source of portfolio data: Broadridge. Source of performance data: FE fundinfo. We can't predict the future. Past performance isn't a guide to future performance. The figures shown are intended only to demonstrate performance history of the fund, after allowing for the impact of fund charges and further costs, but take no account of product charges, or any Annual Management Charge paid for by the deduction of units. Charges and further costs may vary in the future and may be higher than they are now. Fund performance is based upon the movement of the daily price and is shown as total return in GBP with net income reinvested. The value of your investment can go down as well as up so you might get back less than you put in.
- This factsheet is for information purposes only. If there is information or terminology included that you would like to discuss, then please contact an adviser. Investors should refer to their policy documentation and supporting brochures for fund availability, investment strategy, any product information and charges. Every care has been taken in populating this output, however it must be appreciated that neither Broadridge, Prudential nor their sources guarantee the accuracy, adequacy or completeness of this information or make any warranties regarding results from its usage.

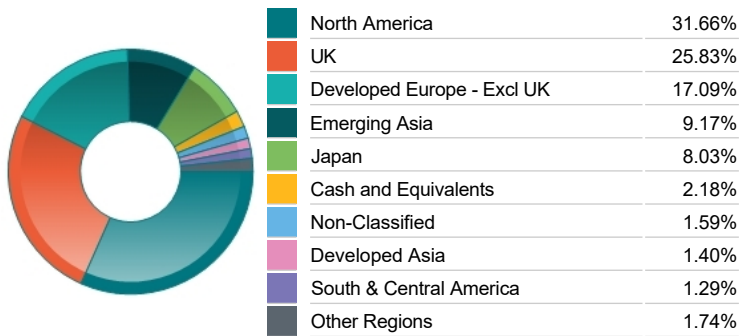
Top 10 Holdings

Name	% Weight	Sector	Country
1 Invesco Markets Plc Invesco S&P 500 UCITS ETF -	11.24%	Non-Classified	United States
2 Invesco Markets Plc Invesco EQQQ Nasdaq-100 UCITS ETF (Dist.)	7.77%	Non-Classified	United States
3 TAIWAN SEMICONDUCTOR MANUFACTURING COMPANY LIMITED	1.19%	Technology Hardware & Equipment	Taiwan
4 SHELL	1.01%	Non-Renewable Energy	United Kingdom
5 SAMSUNG ELECTRONICS CO. LTD	0.92%	Telecommunications Equipment	South Korea
6 TOTAL SE	0.80%	Non-Renewable Energy	France
7 ASTRAZENECA	0.79%	Pharmaceuticals & Biotechnology	United Kingdom
8 SANOFI	0.77%	Pharmaceuticals & Biotechnology	France
9 BP	0.70%	Non-Renewable Energy	United Kingdom
10 UNILEVER	0.67%	Personal Care, Drug & Grocery Stores	United Kingdom

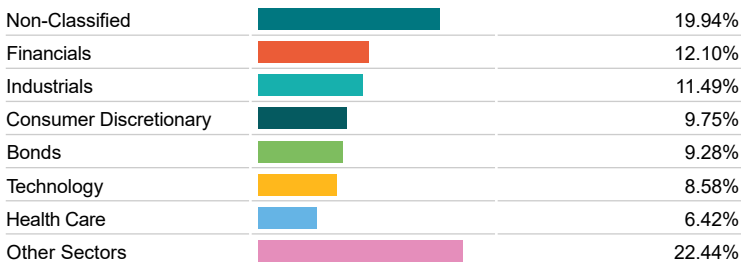
Asset Allocation



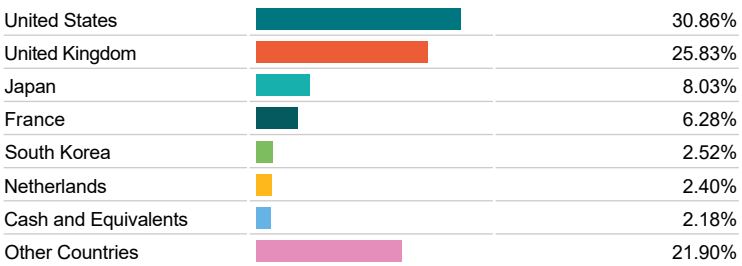
Regional Allocation



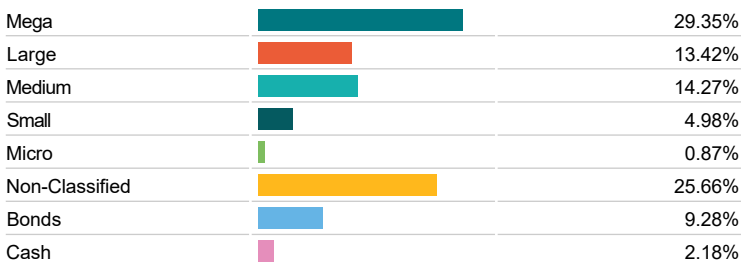
Equity Sector Breakdown



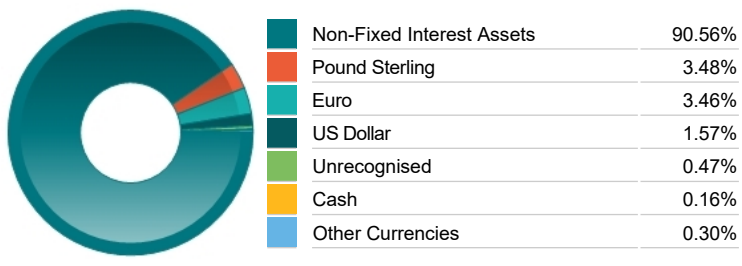
Top Country Breakdown



Breakdown By Market Cap (%)



Fixed Interest Currencies



Important Information

- Because of changes in exchange rates the value of your investment, as well as any money you take from it, can go down as well as up.
- The Industry Classification Benchmark is a product of FTSE International Limited and has been licensed for use.
- "Prudential" is a trading name of The Prudential Assurance Company Limited, which is registered in England and Wales. Registered office at 10 Fenchurch Avenue, London EC3M 5AG. Registered number 15454. Authorised by the Prudential Regulation Authority and regulated by the Financial Conduct Authority and the Prudential Regulation Authority.