

**Benchmark**

Benchmark	FTSE World Index
Sector	ABI Global Equities

**Identification Codes**

Sedol Code	0790323
Mex Code	SBIS
Isin Code	GB0007903239
Citi Code	SB38

**Fund Overview**

Bid (05/08/2022)	685.10
Offer (05/08/2022)	721.10
Fund size (30/06/2022)	£45.30m
Underlying Fund size	£0.00m
Number of holdings	6327
Launch date	31/05/1991

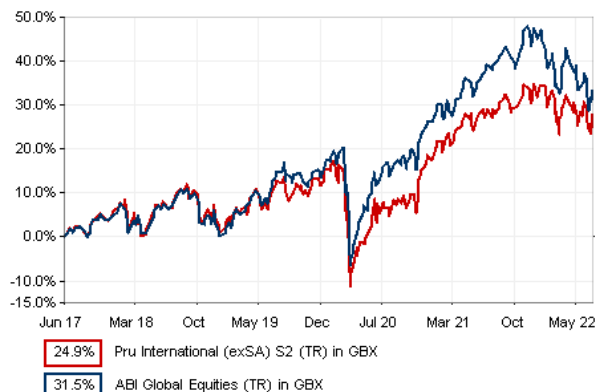
**Fund Charges**

Annual Management Charge (AMC)	0.25%
Further Costs	0.04%
<b>Yearly Total</b>	<b>0.29%</b>

**Aims**

Objective: The investment strategy of the fund is to provide medium to long term growth (5 to 10 years or more) by investing mainly in a spread of equity markets throughout the world, predominantly through collective investment schemes.

**Performance**



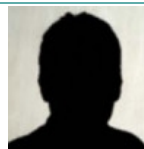
**Discrete performance - to last month end**

	31/07/17 to 31/07/18	31/07/18 to 31/07/19	31/07/19 to 31/07/20	31/07/20 to 31/07/21	31/07/21 to 31/07/22
Fund	8.6%	3.7%	-7.9%	21.9%	0.9%
Sector	8.0%	7.2%	-2.8%	22.1%	-1.2%
Rank	187/367	313/368	320/371	207/372	147/372
Quartile	3	4	4	3	2

**Annualised performance**

	Annualised		
	3 Years to 31/07/22	5 Years to 31/07/22	10 Years to 31/07/22
Fund	4.2%	5.0%	9.3%
Sector	5.5%	6.3%	9.0%
Rank	297/371	303/367	200/322
Quartile	4	4	3

**Fund Managers**



Name: M&G Treasury & Investment Office  
 Manager of the underlying fund for: 7 years, 7 months

**Ratings**

FE Crown



**Important Information**

- Because of changes in exchange rates the value of your investment, as well as any money you take from it, can go down as well as up.
- Some funds may invest in 'underlying' funds or other investment vehicles. The performance of our fund, compared to what it's invested in won't be exactly the same. That can be due to additional charges, cash management (needed to help people to enter and leave our fund when they want), tax and the timing of investments (this is known as a fund's dealing cycle, it varies between managers and can be several days).
- Source of portfolio data: Broadridge. Source of performance data: FE fundinfo. We can't predict the future. Past performance isn't a guide to future performance. The figures shown are intended only to demonstrate performance history of the fund, after allowing for the impact of fund charges and further costs, but take no account of product charges, or any Annual Management Charge paid for by the deduction of units. Charges and further costs may vary in the future and may be higher than they are now. Fund performance is based upon the movement of the daily price and is shown as total return in GBP with net income reinvested. The value of your client's investment can go down as well as up and the amount your client gets back may be less than they put in.
- This factsheet is for investment professionals and is for information purposes only. Should you wish to present any of this content to your client, please refer to similar pages on pru.co.uk. You should refer to your client's policy documentation and supporting brochures for fund availability, investment strategy, any product information and charges. Every care has been taken in populating this output, however it must be appreciated that neither Broadridge, Prudential nor their sources guarantee the accuracy, adequacy or completeness of this information or make any warranties regarding results from its usage.

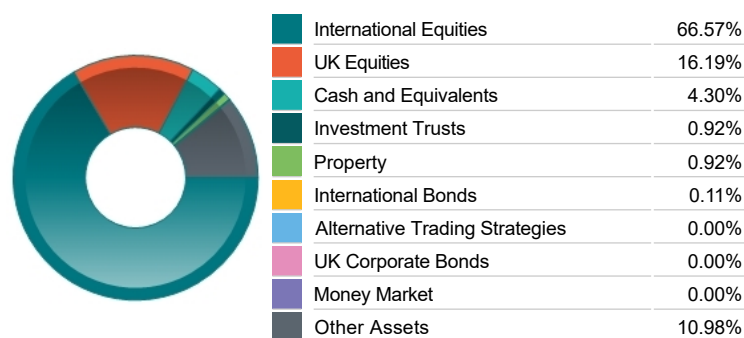
**Top 10 Fund Holdings**

Name	% Weight	Sector	Country
1 M&G (1) Asia Pacific (ex Japan) Equity Class GBPZ2A	20.32%	Managed Funds	Managed Funds
2 M&G (ACS) Blackrock US Equity Z1B	18.07%	Managed Funds	Managed Funds
3 M&G (LUX) FCP Europe ex UK Equity Fund Z1B Acc	12.88%	Managed Funds	Managed Funds
4 M&G (ACS) UK All Share Index Fund Z1B Acc	7.49%	Managed Funds	Managed Funds
5 M&G (ACS) UK 200 Index Fund Z1B Acc	7.31%	Managed Funds	Managed Funds
6 M&G (ACS) Japan Equity Fund Z1B Acc	5.69%	Managed Funds	Managed Funds
7 M&G (LUX) FCP Europe ex UK Index Fund Z1B Acc	4.40%	Managed Funds	Managed Funds
8 M&G (ACS) UK Listed Equity Fund Z1B Acc	4.20%	Managed Funds	Managed Funds
9 M&G ACS CHINA VP EQ FD - GBPZ1B AC Prvt	2.31%	Managed Funds	Managed Funds
10 M&G ACS CHINA M&G EQ FD-GBPZ1B AC	2.28%	Managed Funds	Managed Funds

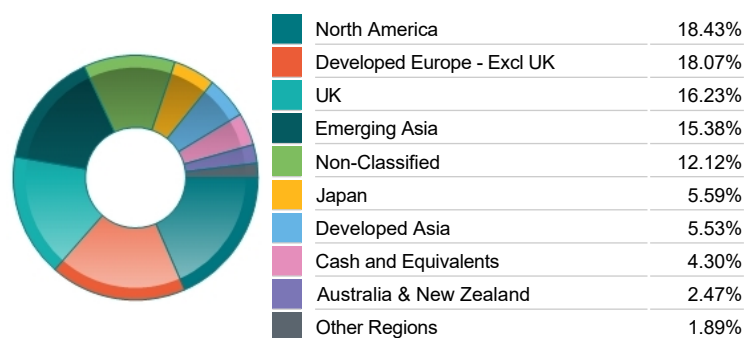
**Top 10 Holdings**

Name	% Weight	Sector	Country
1 TAIWAN SEMICONDUCTOR MANUFACTURING CO.	1.60%	Technology Hardware & Equipment	Taiwan
2 SAMSUNG ELECTRONICS CO. LTD	1.26%	Technology Hardware & Equipment	South Korea
3 MICROSOFT CORP	1.23%	Software & Computer Services	United States
4 APPLE INC	1.21%	Technology Hardware & Equipment	United States
5 M&G ACS EARNEST US SC VALUE GBPZ1B	1.00%	Non-Classified	Non-Classified
6 ASTRAZENECA	0.88%	Pharmaceuticals & Biotechnology	United Kingdom
7 AIA GROUP LTD	0.87%	Life Insurance	Hong Kong
8 NOVARTIS AG	0.80%	Pharmaceuticals & Biotechnology	Switzerland
9 TOTAL SE	0.76%	Non-Renewable Energy	France
10 ROCHE HLDG AG	0.62%	Pharmaceuticals & Biotechnology	Switzerland

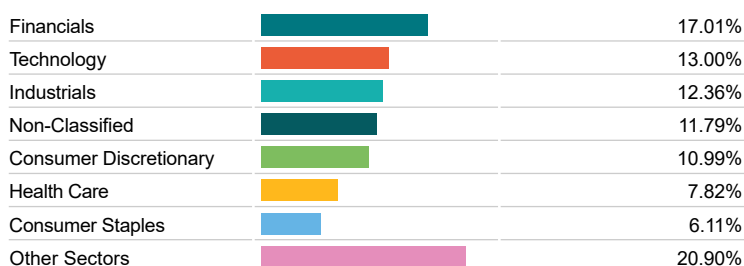
**Asset Allocation**



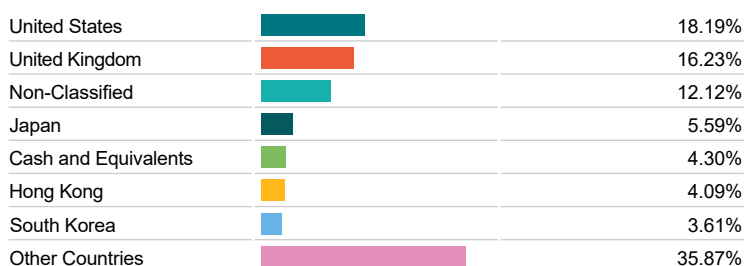
**Regional Allocation**



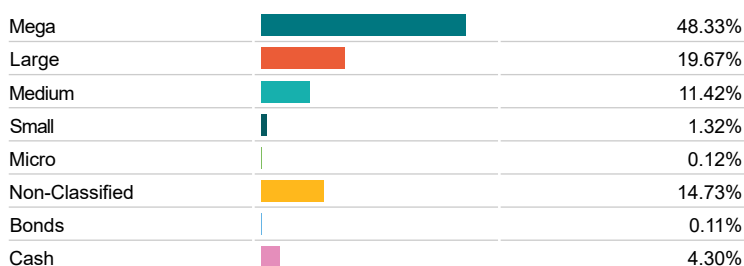
**Sector Breakdown**



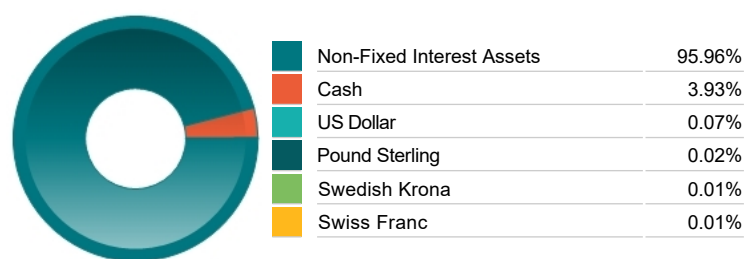
**Top Country Breakdown**



**Breakdown By Market Cap (%)**



**Fixed Interest Currencies**



**Important Information**

- Because of changes in exchange rates the value of your investment, as well as any money you take from it, can go down as well as up.
- The Industry Classification Benchmark is a product of FTSE International Limited and has been licensed for use.
- "Prudential" is a trading name of The Prudential Assurance Company Limited, which is registered in England and Wales. Registered office at 10 Fenchurch Avenue, London EC3M 5AG. Registered number 15454. Authorised by the Prudential Regulation Authority and regulated by the Financial Conduct Authority and the Prudential Regulation Authority.