

**Benchmark**

Benchmark	Composite
Sector	ABI Mixed Investment 40-85% Shares

**Identification Codes**

Sedol Code	3164914
Mex Code	VNMGD
Isin Code	GB0031649147
Citi Code	PW67

**Fund Overview**

Bid (16/08/2022)	248.40
Offer (16/08/2022)	261.40
Fund size (30/06/2022)	£536.56m
Number of holdings	8941
Launch date	17/05/2002

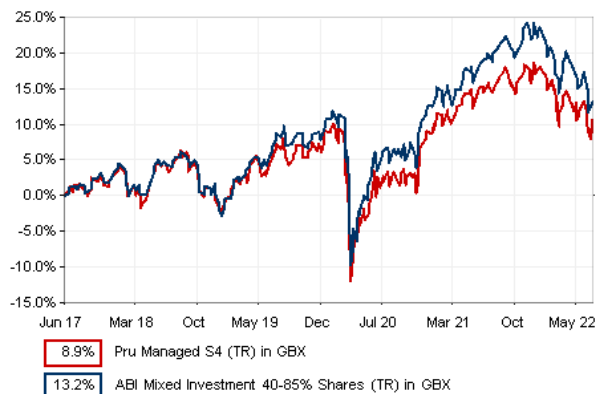
**Fund Charges**

Annual Management Charge (AMC)	1.25%
Further Costs	0.09%
<b>Yearly Total</b>	<b>1.34%</b>

**Aims**

Objective: The investment strategy of the fund is to provide medium to long-term growth (the combination of income and growth of capital) by investing mainly in a broad spread of collective investment schemes. The fund will typically have exposure to a range of asset types, including UK and overseas equities, fixed interest and commercial property.

**Performance**



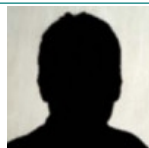
**Discrete performance - to last month end**

	31/07/17 to 31/07/18	31/07/18 to 31/07/19	31/07/19 to 31/07/20	31/07/20 to 31/07/21	31/07/21 to 31/07/22
Fund	4.9%	2.0%	-6.2%	14.0%	-2.8%
Sector	4.7%	4.1%	-4.6%	14.5%	-3.3%
Rank	259/406	358/411	333/414	237/419	236/419
Quartile	3	4	4	3	3

**Annualised performance**

	3 Years to 31/07/22	Annualised 5 Years to 31/07/22	Annualised 10 Years to 31/07/22
Fund	1.3%	2.2%	5.6%
Sector	1.9%	2.9%	5.4%
Rank	318/414	331/406	260/377
Quartile	4	4	3

**Fund Managers**



Name: M&G Treasury & Investment Office  
Manager for: 7 years, 8 months

**Ratings**

FE Crown



**Important Information**

- Because of changes in exchange rates the value of your investment, as well as any money you take from it, can go down as well as up.
- Some funds may invest in 'underlying' funds or other investment vehicles. The performance of our fund, compared to what it's invested in won't be exactly the same. That can be due to additional charges, cash management (needed to help people to enter and leave our fund when they want), tax and the timing of investments (this is known as a fund's dealing cycle, it varies between managers and can be several days).
- Source of portfolio data: Broadridge. Source of performance data: FE fundinfo. We can't predict the future. Past performance isn't a guide to future performance. The figures shown are intended only to demonstrate performance history of the fund, after allowing for the impact of fund charges and further costs, but take no account of product charges, or any Annual Management Charge paid for by the deduction of units. Charges and further costs may vary in the future and may be higher than they are now. Fund performance is based upon the movement of the daily price and is shown as total return in GBP with net income reinvested. The value of your client's investment can go down as well as up and the amount your client gets back may be less than they put in.
- This factsheet is for investment professionals and is for information purposes only. Should you wish to present any of this content to your client, please refer to similar pages on pru.co.uk. You should refer to your client's policy documentation and supporting brochures for fund availability, investment strategy, any product information and charges. Every care has been taken in populating this output, however it must be appreciated that neither Broadridge, Prudential nor their sources guarantee the accuracy, adequacy or completeness of this information or make any warranties regarding results from its usage.

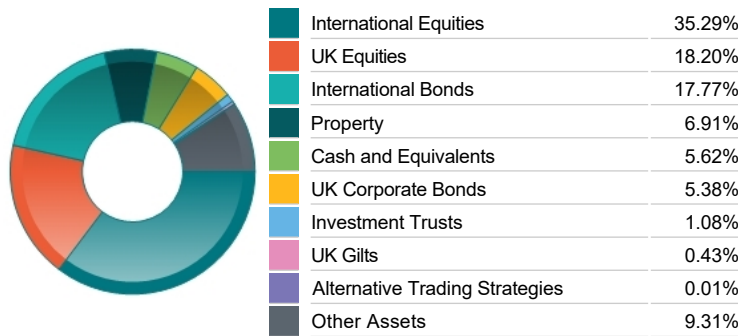
**Top 10 Fund Holdings**

Name	% Weight
1 M&G (1) Sterling Investment Grade Corporate Bond Class Z2A GBP	12.47%
2 M&G (1) Asia Pacific (ex Japan) Equity Class GBPZ2A	10.39%
3 M&G (ACS) Blackrock US Equity Z1B	8.93%
4 M&G (ACS) UK All Share Index Fund Z1B Acc	8.44%
5 M&G (ACS) UK 200 Index Fund Z1B Acc	8.34%
6 M&G Feeder of Property Portfolio Class I GBP	7.91%
7 Eastspring US Corporate Bond Class EG (hedged)	7.67%
8 M&G (LUX) FCP Europe ex UK Equity Fund Z1B Acc	6.19%
9 M&G (ACS) UK Listed Equity Fund Z1B Acc	4.47%
10 M&G (ACS) Japan Equity Fund Z1B Acc	3.68%

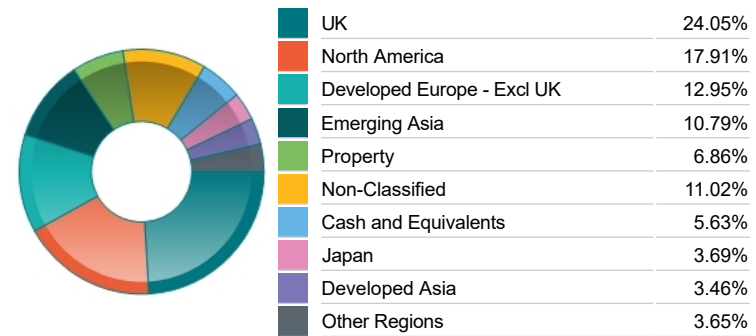
**Top 10 Holdings**

Name	% Weight
1 ASTRAZENECA	0.97%
2 TAIWAN SEMICONDUCTOR MANUFACTURING CO.	0.84%
3 JUNCTION SIX BIRMINGHAM	0.76%
4 PARC TROSTRE RETAIL PARK, LLAN	0.69%
5 SAMSUNG ELECTRONICS CO. LTD	0.67%
6 HSBC HOLDINGS	0.65%
7 MICROSOFT CORP	0.61%
8 APPLE INC	0.60%
9 GLAXOSMITHKLINE	0.59%
10 SHELL	0.59%

**Asset Allocation**



**Regional Allocation**



**Sector Breakdown**

Bonds	23.58%
Financials	11.38%
Non-Classified	10.17%
Industrials	8.21%
Consumer Discretionary	7.49%
Technology	7.15%
Property	5.75%
Other Sectors	26.26%

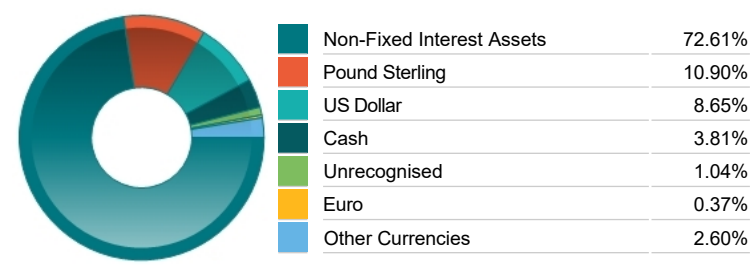
**Top Country Breakdown**

United Kingdom	24.05%
United States	17.18%
Direct Property and REITs	6.86%
Non-Classified	11.05%
Cash and Equivalents	5.63%
Japan	3.69%
France	2.81%
Other Countries	28.74%

**Breakdown By Market Cap (%)**

Mega	28.92%
Large	13.14%
Medium	9.78%
Small	1.34%
Micro	0.10%
Non-Classified	17.53%
Bonds	23.58%
Cash	5.62%

**Fixed Interest Currencies**



**Fixed Interest Quality Profile**

AAA	3.56%
AA	1.97%
A	5.19%
BBB	7.22%
Sub-Investment Grade	0.64%
Unknown Quality	5.00%
Cash and Equivalents	5.62%
Other Asset Types	70.80%

**Fixed Interest Maturity Profile**

< 5Yr Maturity	6.98%
5Yr - 10Yr Maturity	8.19%
10Yr - 15Yr Maturity	2.22%
> 15Yr Maturity	6.19%
Cash And Equivalents	5.62%
Unknown Maturity	5.00%
Other Asset Types	65.81%

**Important Information**

- Because of changes in exchange rates the value of your investment, as well as any money you take from it, can go down as well as up.
- The Industry Classification Benchmark is a product of FTSE International Limited and has been licensed for use.
- "Prudential" is a trading name of The Prudential Assurance Company Limited, which is registered in England and Wales. Registered office at 10 Fenchurch Avenue, London EC3M 5AG. Registered number 15454. Authorised by the Prudential Regulation Authority and regulated by the Financial Conduct Authority and the Prudential Regulation Authority.