

Aims

Objective: The investment strategy of the fund is to purchase units in the LGIM FTSE4Good UK Equity Index - the underlying fund.

Underlying Fund Objective: The fund aims to track the sterling total returns of the FTSE4Good UK Equity Index (including re-invested income, less withholding tax) to within +/- 0.5% per annum for two years in three.

Benchmark

Benchmark FTSE4Good UK Equity Index
Sector ABI UK All Companies

Identification Codes

Sedol Code BWV0BD2
Mex Code PUZZC
Isin Code GB00BWV0BD26
Citi Code M9ZM

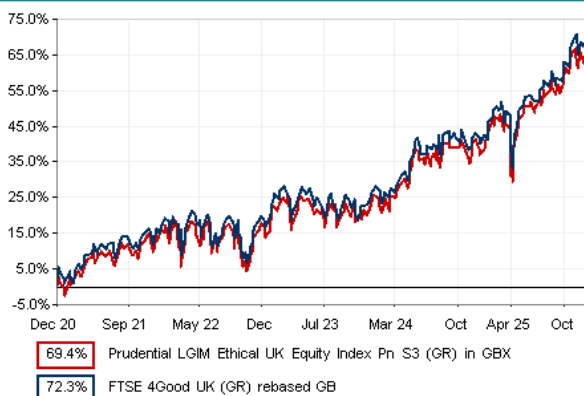
Fund Overview

Daily price (04/03/2026) 385.27
Fund size (31/01/2026) £8.57m
Underlying Fund size £230.06m
Number of holdings 195
Launch date 03/07/2015

Fund Charges

Annual Management Charge (AMC) Please refer to the "Guide to Fund Options" for your specific pension plan

Performance



Discrete performance - to latest available quarter end

	31/12/20 to 31/12/21	31/12/21 to 31/12/22	31/12/22 to 31/12/23	31/12/23 to 31/12/24	31/12/24 to 31/12/25
Fund	16.4%	0.9%	7.3%	10.8%	21.4%
Benchmark	17.4%	0.9%	8.3%	10.3%	21.8%

Performance - to latest available quarter end

	Quarter 4 2025	3 Years to 31/12/25	Annualised 5 Years to 31/12/25	Annualised 10 Years to 31/12/25
Fund	6.3%	13.0%	11.1%	8.5%
Benchmark	7.8%	13.3%	11.5%	8.2%

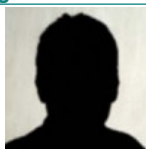
Prudential Risk Rating

Higher Risk
These are specialist equity funds that focus on set geographical regions or a particular type of share e.g. shares of smaller companies or those that conform to certain criteria.

These risk ratings have been developed by Prudential to help provide an indication of a fund's potential level of risk and reward based on the type of assets which may be held by the fund. Other companies may use different descriptions and as such these risk ratings should not be considered as generic across the fund management industry.

We regularly review our fund risk ratings, so they may change in the future. If, in our view, there is a material change in the fund's level of risk, for example due to a significant change to the assets held by the fund or in the way the fund is managed, we will provide information on the new risk rating. We recommend that you make sure you understand the risk rating of any fund before you invest.

Fund Managers



Name: Index Fund Management Team

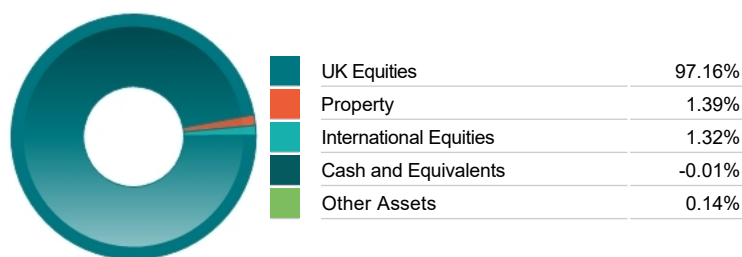
Important Information

- Because of changes in exchange rates the value of your investment, as well as any money you take from it, can go down as well as up.
- Some funds may invest in 'underlying' funds or other investment vehicles. The performance of our fund, compared to what it's invested in won't be exactly the same. That can be due to additional charges, cash management (needed to help people to enter and leave our fund when they want), tax and the timing of investments (this is known as a fund's dealing cycle, it varies between managers and can be several days).
- Source: London Stock Exchange Group plc and its group undertakings (collectively, the "LSE Group"). © LSE Group 2023. FTSE Russell is a trading name of certain of the LSE Group companies. e.g., "FTSE®", "Russell®", "FTSE Russell®", "MTS®", "FTSE4Good®", "ICB®", "Mergent®, The Yield Book®," are a trade mark(s) of the relevant LSE Group companies and are used by any other LSE Group company under license. "TMX®" is a trade mark of TSX, Inc. and used by the LSE Group under license. All rights in the FTSE Russell indexes or data vest in the relevant LSE Group company which owns the index or the data. Neither LSE Group nor its licensors accept any liability for any errors or omissions in the indexes or data and no party may rely on any indexes or data contained in this communication. No further distribution of data from the LSE Group is permitted without the relevant LSE Group company's express written consent. The LSE Group does not promote, sponsor or endorse the content of this communication.
- Source of portfolio data: Broadridge. Source of performance data: FE fundinfo. We can't predict the future. Past performance isn't a guide to future performance. The figures shown are intended only to demonstrate performance history of the fund, after allowing for the impact of fund charges and further costs, but take no account of any Annual Management Charge paid for by the deduction of units. Charges and further costs may vary in the future and may be higher than they are now. Fund performance is based upon the movement of the daily price and is shown as total return in GBP with gross income reinvested. The value of your client's investment can go down as well as up and the amount your client gets back may be less than they put in.
- This factsheet is intended for the advisers of occupational pension schemes using Prudential group pension contracts and Prudential grouped personal pensions and Stakeholder pension contracts. Its purpose is to provide an insight into how investment markets and funds have performed over the period and is provided for information only. You should refer to your client's scheme documentation (e.g. Fund Guide) for fund availability, investment strategy, any scheme information and charges. Every care has been taken in populating this output, however it must be appreciated that neither Broadridge, Prudential nor their sources guarantee the accuracy, adequacy or completeness of this information or make any warranties regarding results from its usage.

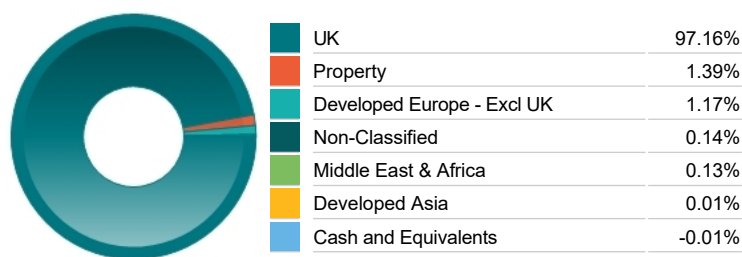
Top 10 Holdings

Name	% Weight	Sector	Country
1 HSBC HOLDINGS	10.31%	Banks	United Kingdom
2 ASTRAZENECA	9.58%	Pharmaceuticals & Biotechnology	United Kingdom
3 SHELL	6.86%	Non-Renewable Energy	United Kingdom
4 UNILEVER	4.98%	Personal Care, Drug & Grocery Stores	United Kingdom
5 GSK	3.52%	Pharmaceuticals & Biotechnology	United Kingdom
6 RIO TINTO	3.27%	Industrial Metals & Mining	United Kingdom
7 BARCLAYS	3.16%	Banks	United Kingdom
8 LLOYDS BANKING GROUP	3.03%	Banks	United Kingdom
9 NATIONAL GRID	2.92%	Gas, Water & Multi-utilities	United Kingdom
10 ROYAL BANK OF SCOTLAND GROUP	2.53%	Banks	United Kingdom

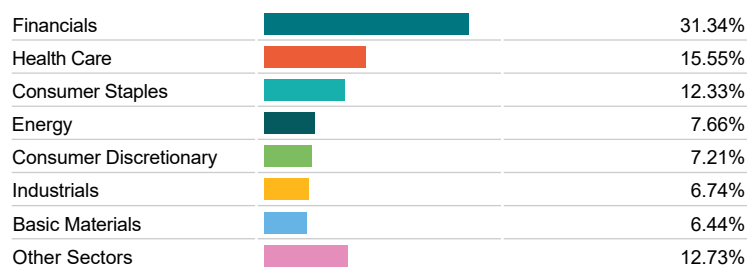
Asset Allocation



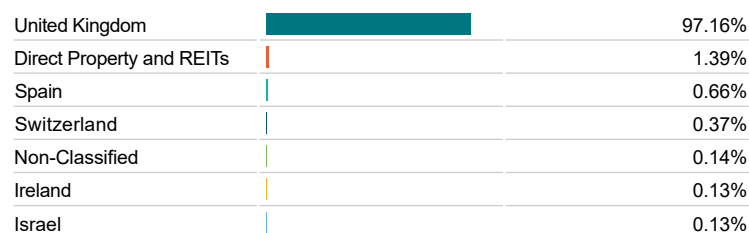
Regional Allocation



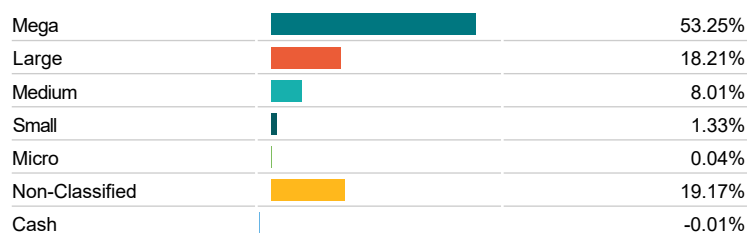
Equity Sector Breakdown



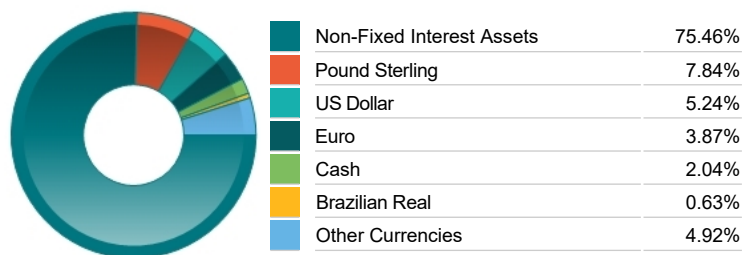
Top Country Breakdown



Breakdown By Market Cap (%)



Fixed Interest Currencies



Important Information

- Because of changes in exchange rates the value of your investment, as well as any money you take from it, can go down as well as up. All rights in the FTSE4Good Global Equity Index vest in FTSE International Limited ("FTSE"). "FTSE®" is a trade mark of the London Stock Exchange Plc and The Financial Times Limited and is used by FTSE under licence. The Ethical Global Equity Index Fund has been developed solely by Legal & General Investment Management Limited. The Index is calculated by FTSE or its agent. FTSE and its licensors do not sponsor, advise, recommend, endorse or promote this Ethical Global Equity Index Fund and are not in any way connected to it and do not accept any liability (including in negligence or otherwise) to any person for any loss arising out of use of the Index by any person or in relation to the Ethical Global Equity Index Fund's issue, operation or trading or as a result of an investment in the Ethical Global Equity Index Fund. FTSE makes no claim, prediction, warranty or representation whatsoever, expressly or impliedly, either as to the results to be obtained from the use of the Ethical Global Equity Index Fund or as to the fitness or suitability of the Index for the particular purpose to which it is being put by Legal & General Investment Management Limited.
- The Industry Classification Benchmark is a product of FTSE International Limited and has been licensed for use.
- 'Prudential' is a trading name of Prudential Pensions Limited. Prudential Pensions Limited is registered in England and Wales. Registered office at 10 Fenchurch Avenue, London EC3M 5AG. Registered number 992726. Authorised by the Prudential Regulation Authority and regulated by the Financial Conduct Authority and the Prudential Regulation Authority.

Commentary

Performance as at Q3 2025 - This was a strong quarter for the UK market, with the FTSE 100 and the FTSE All-Share both hitting record highs during the period.

The strongest areas of the market were the basic materials and energy sectors, helped by rising commodity prices and supply concerns. Technology and real estate were the weakest areas of the market.

Economic news was mixed over the period. As expected, gross domestic product (GDP) growth slowed in the second quarter, expanding by just 0.3% after 0.7% in the first. Weakness in April and May was offset by a strong rebound in June, however. Meanwhile, business investment was down, and export volumes decreased.

Early in the quarter, investor sentiment was boosted by a July interview with Bank of England (BoE) Governor Andrew Bailey, in which he said of interest rates "I really do believe the path is downward". In early August, the BoE cut interest rates to 4.0%.

Later in August, inflation was shown to have risen to 3.8% in July, and it held steady at that rate in August. As this level is well above the BoE's 2% target, the news prompted uncertainty about whether or not November would bring a further rate cut.

Sterling weakened against the dollar and the euro over the period. This supported FTSE 100 shares, as many large UK-listed companies earn the majority of their revenues overseas. A weaker pound means that these revenues are worth more when translated into sterling.

Source: Legal & General Investment Management

Important Information

- Prudential' is a trading name of Prudential Pensions Limited. Prudential Pensions Limited is registered in England and Wales. Registered office at 10 Fenchurch Avenue, London EC3M 5AG. Registered number 992726. Authorised by the Prudential Regulation Authority and regulated by the Financial Conduct Authority and the Prudential Regulation Authority.