

## Benchmark

Benchmark	Variable
Sector	OI Mixed Investment 20-60% Shares

## Identification Codes

Sedol Code	B0MSSB8
Mex Code	SBDFDT
Isin Code	IE00B0MSSB80
Citi Code	TJ80

## Fund Overview

Bid (05/08/2022)	1.44
Offer (05/08/2022)	1.51
Fund size (30/06/2022)	€0.70m
Number of holdings	884
Launch date	28/10/2005

## Fund Charges

Annual Management Charge (AMC)	1.30%
Further Costs	0.15%
<b>Yearly Total</b>	<b>1.45%</b>

## Aims

Objective: The fund aims to deliver capital growth together with reinvested income over the longer term.

Fund Investments: The fund primarily invests in European equity and fixed income funds, UK property funds and cash. These assets are predominantly denominated in euro.

## Performance



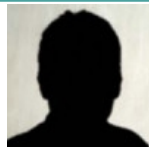
## Discrete performance - to last month end

	31/07/17 to 31/07/18	31/07/18 to 31/07/19	31/07/19 to 31/07/20	31/07/20 to 31/07/21	31/07/21 to 31/07/22
Fund	2.4%	-2.4%	-6.9%	14.9%	-2.9%
Sector	2.3%	3.1%	-1.4%	15.1%	-3.4%
Rank	117/212	209/233	212/243	148/260	122/275
Quartile	3	4	4	3	2

## Annualised performance

	Annualised		
	3 Years to 31/07/22	5 Years to 31/07/22	10 Years to 31/07/22
Fund	1.3%	0.7%	4.3%
Sector	3.1%	2.9%	3.2%
Rank	186/243	172/212	40/141
Quartile	4	4	2

## Fund Managers



Name: M&G Treasury & Investment Office  
 Manager for: 16 years, 9 months

## Ratings

FE Crown



## Important Information

- Because of changes in exchange rates the value of your investment, as well as any money you take from it, can go down as well as up.
- Some funds may invest in 'underlying' funds or other investment vehicles. The performance of our fund, compared to what it's invested in won't be exactly the same. That can be due to additional charges, cash management (needed to help people to enter and leave our fund when they want), tax and the timing of investments (this is known as a fund's dealing cycle, it varies between managers and can be several days).
- Source of portfolio data: Broadridge. Source of performance data: FE fundinfo. We can't predict the future. Past performance isn't a guide to future performance. The figures shown are intended only to demonstrate performance history of the fund, after allowing for the impact of fund charges and further costs, but take no account of product charges, or any Annual Management Charge paid for by the deduction of units. Charges and further costs may vary in the future and may be higher than they are now. Fund performance is based upon the movement of the daily price and is shown as total return in the fund's currency of denomination with gross income reinvested. The value of your client's investment can go down as well as up and the amount your client gets back may be less than they put in.
- This factsheet is for investment professionals and is for information purposes only. Should you wish to present any of this content to your client, please refer to similar pages on pru.co.uk. You should refer to your client's policy documentation and supporting brochures for fund availability, investment strategy, any product information and charges. Every care has been taken in populating this output, however it must be appreciated that neither Broadridge, Prudential nor their sources guarantee the accuracy, adequacy or completeness of this information or make any warranties regarding results from its usage.

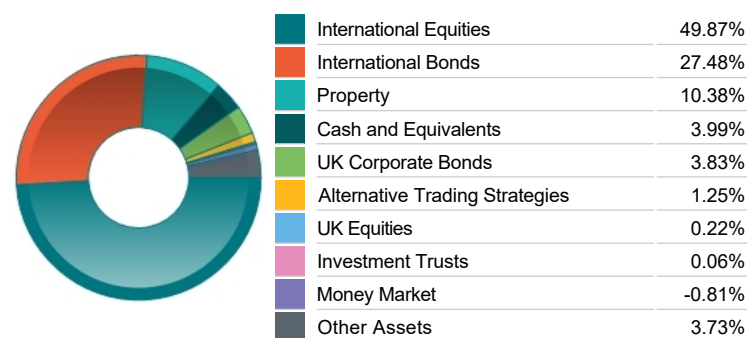
**Top 10 Fund Holdings**

Name	% Weight
1 M&G (LUX) FCP Europe ex UK Equity Fund Z3A Acc	37.91%
2 M&G European Corporate Bond Class A GBP	34.34%
3 M&G Feeder of Property Portfolio Class A GBP	13.33%
4 M&G (LUX) FCP Europe ex UK Index Fund Z3A Acc	13.00%
5 PIA Euro Deposit Ser B EUR	0.01%

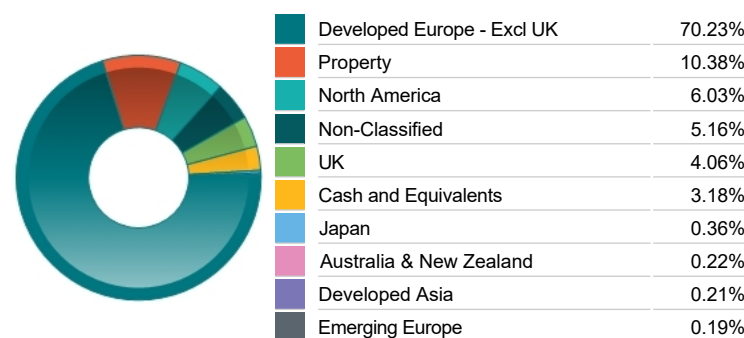
**Top 10 Holdings**

Name	% Weight
1 EURO-SCHATZ SEP 22 EUR	3.85%
2 NOVARTIS AG	2.36%
3 TOTAL SE	2.24%
4 ROCHE HLDG AG	1.84%
5 NESTLE S.A.	1.57%
6 JUNCTION SIX BIRMINGHAM	1.29%
7 SANOFI	1.26%
8 KONINKLIJKE AHOLD DELHAIZE NV	1.26%
9 UPM-KYMMENE OYJ	1.22%
10 PARC TROSTRE RETAIL PARK, LLAN	1.16%

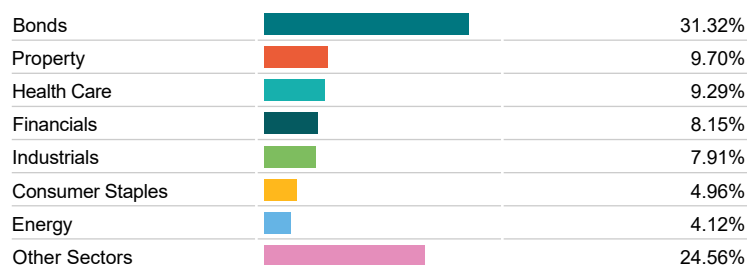
**Asset Allocation**



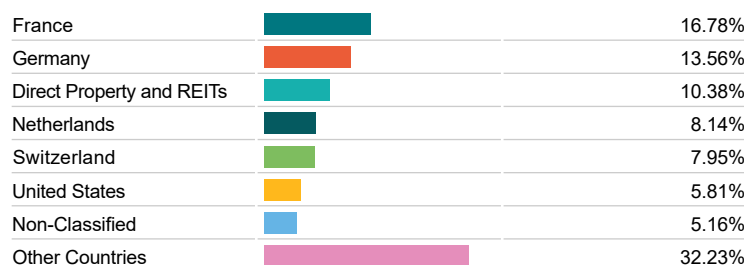
**Regional Allocation**



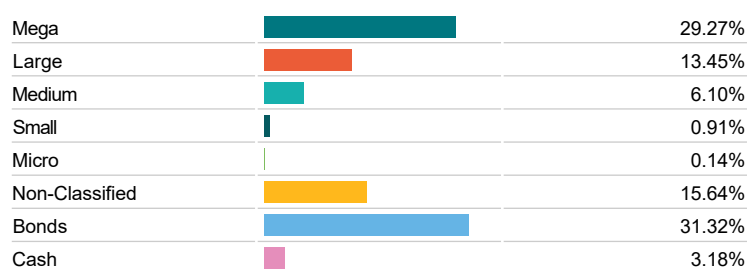
**Sector Breakdown**



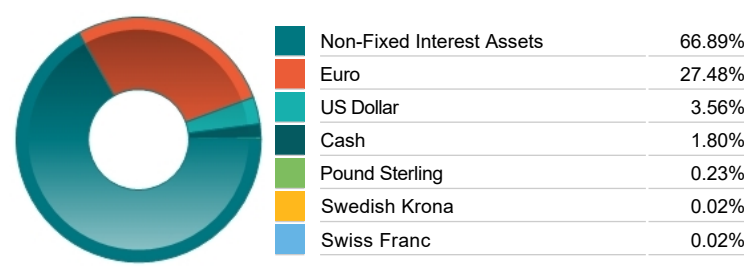
**Top Country Breakdown**



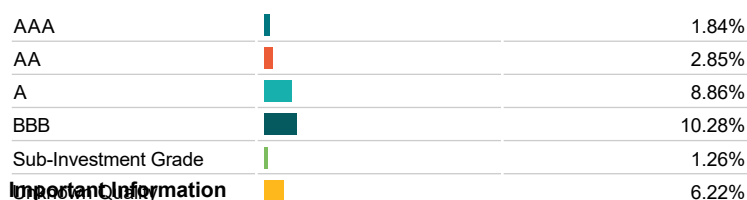
**Breakdown By Market Cap (%)**



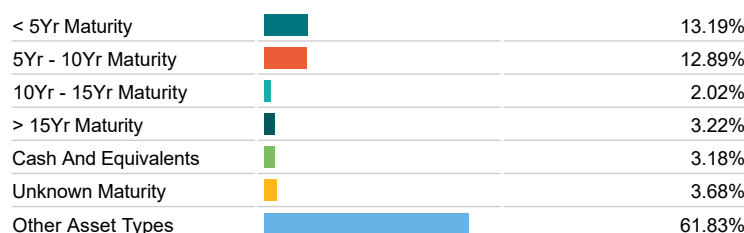
**Fixed Interest Currencies**



**Fixed Interest Quality Profile**



**Fixed Interest Maturity Profile**



**Important Information**

Cash and Equivalents 3.18%  
 Because of changes in exchange rates the value of your investment, as well as any money you take from it, can go down as well as up.  
 The Investment Classification Benchmark is a product of FTSE International Limited and has been licensed for use.  
 The registered office of Prudential International is in Ireland at Montague House, Adelaide Road, Dublin 2. Prudential International is a marketing name of Prudential International Assurance plc, a life assurance company operating from Ireland. Registration No. 209956. Prudential International Assurance plc is authorised and regulated by the Central Bank of Ireland and in the context of its UK regulated activities only, is deemed authorised by the Prudential Regulation Authority and subject to regulation by the Financial Conduct Authority and limited regulation by the Prudential Regulation Authority. Details of the Temporary Permissions Regime, which allows EEA-based firms to operate in the UK for a limited period while seeking full authorisation, are available on the Financial Conduct Authority's website. Prudential International is part of the same corporate group as The Prudential Assurance Company Limited. Both The Prudential Assurance Company Limited and Prudential International are direct and indirect subsidiaries respectively of M&G plc, a company incorporated in the United Kingdom. The Prudential Assurance Company Limited is not affiliated in any manner with Prudential Financial, Inc, a company whose principal place of business is in the United States of America or Prudential plc, an international group incorporated in the United Kingdom.