

Benchmark

Benchmark	FTSE Custom Asia Pacific ex Japan Country Capped Index
ABI Sector	Asia Pacific excluding Japan Equities

Identification Codes

Sedol Code	0775944
Mex Code	SBAP
Isin Code	GB0007759441
Citi Code	SB32

Fund Overview

Bid (22/08/2025)	925.80
Offer (22/08/2025)	974.50
Fund size (30/06/2025)	£22.09m
Number of holdings	307
Launch date	08/04/1991

Fund Charges

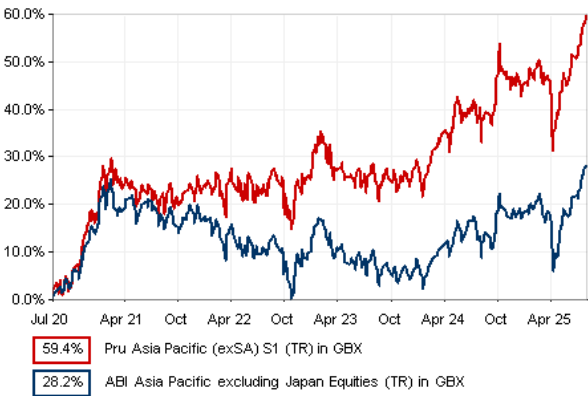
Annual Management Charge (AMC)	0.75%
Further Costs	0.08%
<b>Yearly Total</b>	<b>0.83%</b>

Aims

Objective: The investment strategy of the fund is to purchase units in the M&G Funds (1) - Asia Pacific (ex Japan) Equity fund - the underlying fund.

Underlying Fund Objective: The Sub-Fund aims to provide a higher total return (capital growth plus income), net of the Ongoing Charge Figure, than the FTSE Custom Asia Pacific ex Japan Country Capped Index over any three-year period.

Performance



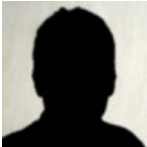
Discrete performance - to last month end

	31/07/20 to 31/07/21	31/07/21 to 31/07/22	31/07/22 to 31/07/23	31/07/23 to 31/07/24	31/07/24 to 31/07/25
Fund	18.6%	4.2%	4.0%	8.4%	14.4%
Sector	16.0%	-4.7%	-0.5%	3.0%	13.1%
Rank	28/97	2/97	5/97	19/97	18/97
Quartile	2	1	1	1	1

Annualised performance

	3 Years to 31/07/25	5 Years to 31/07/25	10 Years to 31/07/25
Fund	8.8%	9.8%	7.4%
Sector	5.0%	5.1%	7.0%
Rank	2/97	6/97	35/91
Quartile	1	1	2

Fund Managers



Name: David Perrett  
Manager for: 3 years, 11 months

Ratings

FE Crown



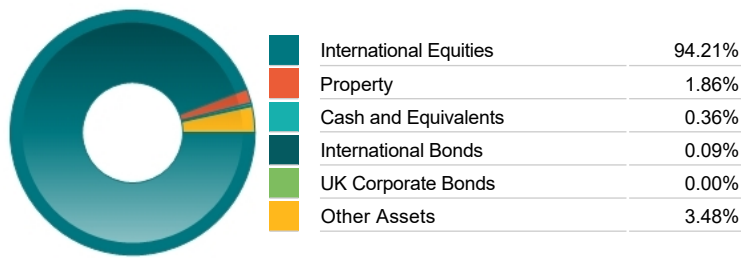
Important Information

- Because of changes in exchange rates the value of your investment, as well as any money you take from it, can go down as well as up.
- Some funds may invest in 'underlying' funds or other investment vehicles. The performance of our fund, compared to what it's invested in won't be exactly the same. That can be due to additional charges, cash management (needed to help people to enter and leave our fund when they want), tax and the timing of investments (this is known as a fund's dealing cycle, it varies between managers and can be several days).
- Source of portfolio data: Broadridge. Source of performance data: FE fundinfo. We can't predict the future. Past performance isn't a guide to future performance. The figures shown are intended only to demonstrate performance history of the fund, after allowing for the impact of fund charges and further costs, but take no account of product charges, or any Annual Management Charge paid for by the deduction of units. Charges and further costs may vary in the future and may be higher than they are now. Fund performance is based upon the movement of the daily price and is shown as total return in GBP with net income reinvested. The value of your investment can go down as well as up so you might get back less than you put in.
- This factsheet is for information purposes only. If there is information or terminology included that you would like to discuss, then please contact an adviser. Investors should refer to their policy documentation and supporting brochures for fund availability, investment strategy, any product information and charges. Every care has been taken in populating this output, however it must be appreciated that neither Broadridge, Prudential nor their sources guarantee the accuracy, adequacy or completeness of this information or make any warranties regarding results from its usage.

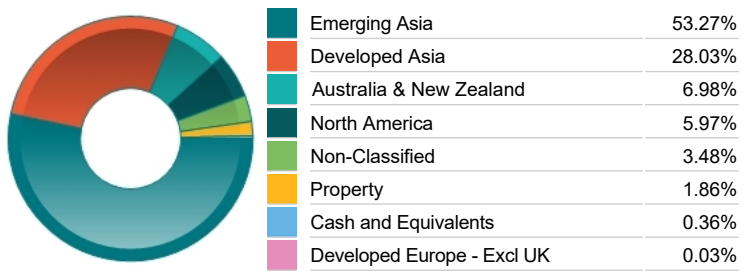
Top 10 Holdings

Name	% Weight	Sector	Country
1 TAIWAN SEMICONDUCTOR MANUFACTURING COMPANY LIMITED	8.19%	Technology Hardware & Equipment	Taiwan
2 AIA GROUP LIMITED	5.02%	Life Insurance	Hong Kong
3 SAMSUNG ELECTRONICS CO. LTD	3.78%	Telecommunications Equipment	South Korea
4 HDFC BANK LIMITED	3.06%	Banks	India
5 AMCOR	2.75%	General Industrials	United States
6 SK HYNIX	2.66%	Technology Hardware & Equipment	South Korea
7 TELEKOMUNIKASI INDONESIA(PERSERO)	2.18%	Telecommunications Service Providers	Indonesia
8 SUN HUNG KAI PROPERTIES LIMITED	2.13%	Real Estate Investment & Services	Hong Kong
9 SAMSUNG LIFE INSURANCE CO.	1.96%	Life Insurance	South Korea
10 USD FWD ASSET 15 JUL 2025	1.89%	Non-Classified	Non-Classified

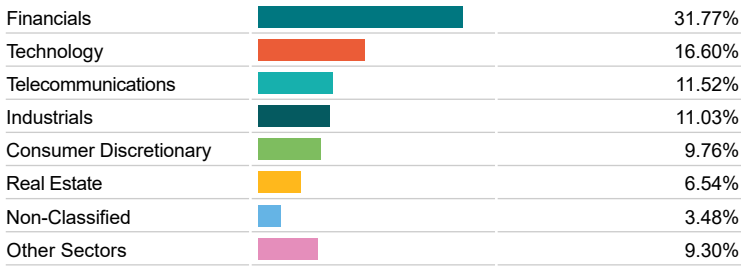
Asset Allocation



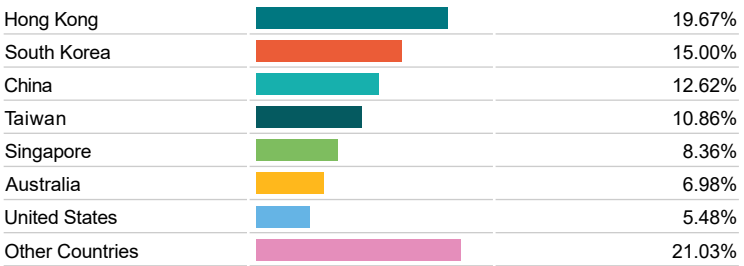
Regional Allocation



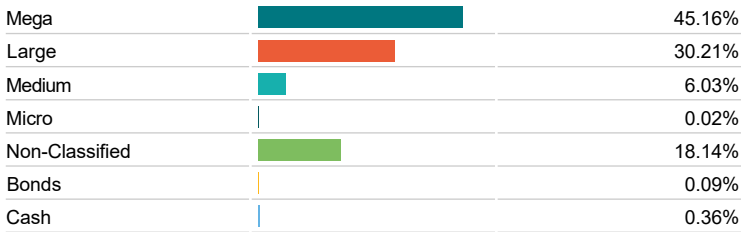
Equity Sector Breakdown



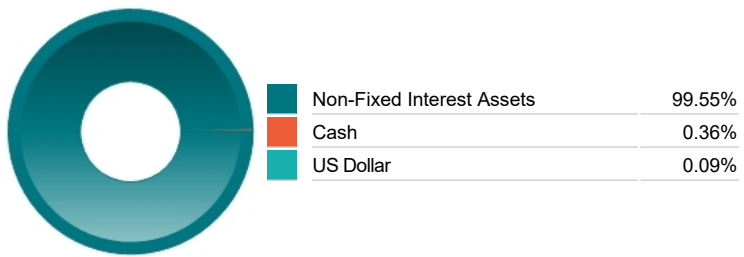
Top Country Breakdown



Breakdown By Market Cap (%)



Fixed Interest Currencies



Important Information

- Because of changes in exchange rates the value of your investment, as well as any money you take from it, can go down as well as up.
- The Industry Classification Benchmark is a product of FTSE International Limited and has been licensed for use.
- 'Prudential' is a trading name of The Prudential Assurance Company Limited, which is registered in England and Wales. Registered office at 10 Fenchurch Avenue, London EC3M 5AG. Registered number 15454. Authorised by the Prudential Regulation Authority and regulated by the Financial Conduct Authority and the Prudential Regulation Authority.