

Benchmark

Benchmark	S&P 500
Sector	ABI North America Equities

Identification Codes

Sedol Code	BYTC0S2
Mex Code	PUPPF
Isin Code	GB00BYTC0S27
Citi Code	N02W

Fund Overview

Bid (05/08/2022)	194.20
Offer (05/08/2022)	204.00
Fund size (30/06/2022)	£42.76m
Number of holdings	265
Launch date	23/03/2016

Fund Charges

Annual Management Charge (AMC)	1.00%
Further Costs	0.02%
Yearly Total	1.02%

Aims

Objective: The investment strategy of the fund is to purchase units in the M&G (ACS) BlackRock Optimised US Equity Fund – the underlying fund.

Underlying Fund Objective: The Sub-Fund aims to reflect the risk and return characteristics of the S&P 500 Index gross of the Ongoing Charges Figure. The Sub-Investment Manager uses a structured and systematic, bottom-up stock selection process to build a portfolio with similar risk-return characteristics as the Index in order to meet the Sub-Fund's investment objective; in addition the Sub-Investment Manager aims to maximise the Sub-Fund's ESG characteristics by overweighting its investments in securities which score well against the Sub-Investment Manager's ESG research framework, and underweighting the securities which score less well.

Performance



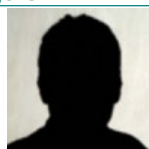
Discrete performance - to latest available quarter end

	30/06/17 to 30/06/18	30/06/18 to 30/06/19	30/06/19 to 30/06/20	30/06/20 to 30/06/21	30/06/21 to 30/06/22
Fund	9.5%	9.1%	3.7%	20.9%	-1.1%
Sector	10.3%	8.7%	6.5%	24.2%	-4.5%
Rank	112/178	102/180	138/182	141/183	89/183
Quartile	3	3	4	4	2

Performance - to latest available quarter end

	Quarter 2 2022	3 Years to 30/06/22	5 Years to 30/06/22	10 Years to 30/06/22
Fund	-9.9%	7.4%	8.1%	n/a
Sector	-10.2%	8.1%	8.7%	11.6%
Rank	111/185	126/182	129/178	n/a
Quartile	3	3	3	n/a

Fund Managers



Name: BlackRock
 Manager for: 0 years, 10 months

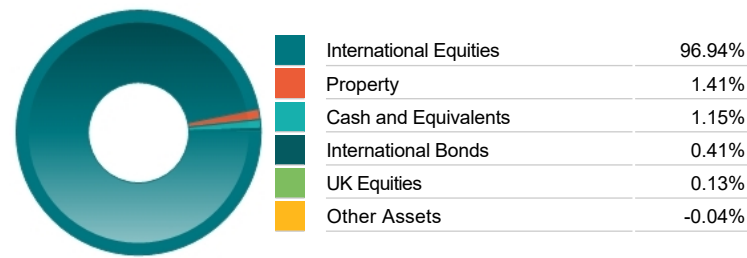
Important Information

- Because of changes in exchange rates the value of your investment, as well as any money you take from it, can go down as well as up.
- Some funds may invest in 'underlying' funds or other investment vehicles. The performance of our fund, compared to what it's invested in won't be exactly the same. That can be due to additional charges, cash management (needed to help people to enter and leave our fund when they want), tax and the timing of investments (this is known as a fund's dealing cycle, it varies between managers and can be several days).
- Source of portfolio data: Broadridge. Source of performance data: FE fundinfo. We can't predict the future. Past performance isn't a guide to future performance. The figures shown are intended only to demonstrate performance history of the fund, after allowing for the impact of fund charges and further costs, but take no account of product charges, or any Annual Management Charge paid for by the deduction of units. Charges and further costs may vary in the future and may be higher than they are now. Fund performance is based upon the movement of the daily price and is shown as total return in GBP with net income reinvested. The value of your investment can go down as well as up so you might get back less than you put in.
- This factsheet is for information purposes only. If there is information or terminology included that you would like to discuss, then please contact an adviser. Investors should refer to their policy documentation and supporting brochures for fund availability, investment strategy, any product information and charges. Every care has been taken in populating this output, however it must be appreciated that neither Broadridge, Prudential nor their sources guarantee the accuracy, adequacy or completeness of this information or make any warranties regarding results from its usage.

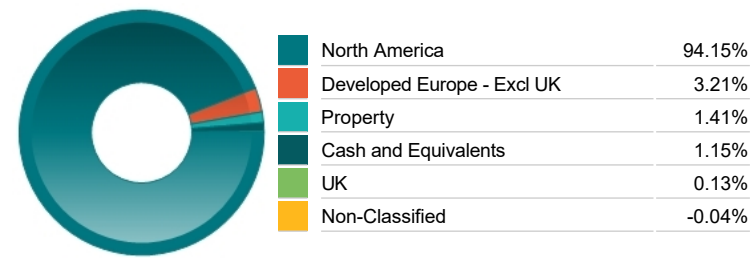
Top 10 Holdings

Name	% Weight	Sector	Country
1 MICROSOFT CORP	6.80%	Software & Computer Services	United States
2 APPLE INC	6.66%	Technology Hardware & Equipment	United States
3 AMAZON.COM	2.83%	Retailers	United States
4 ALPHABET INC	2.31%	Software & Computer Services	United States
5 ALPHABET INC	2.19%	Software & Computer Services	United States
6 JOHNSON & JOHNSON	1.92%	Pharmaceuticals & Biotechnology	United States
7 COCA-COLA CO	1.79%	Beverages	United States
8 TESLA INC	1.72%	Automobiles & Parts	United States
9 PEPSICO	1.48%	Beverages	United States
10 NVIDIA CORP	1.45%	Technology Hardware & Equipment	United States

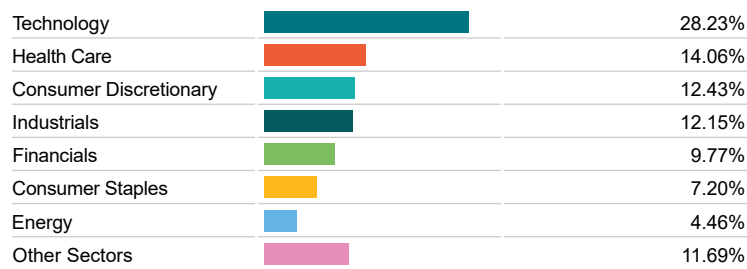
Asset Allocation



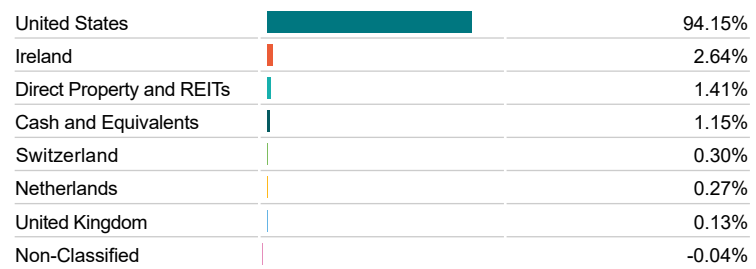
Regional Allocation



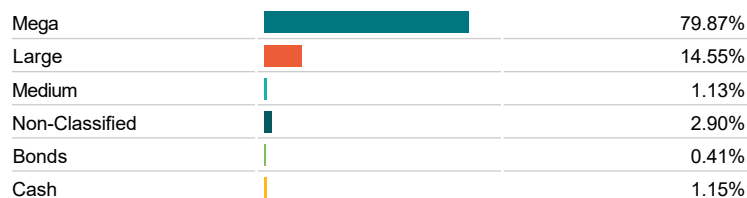
Equity Sector Breakdown



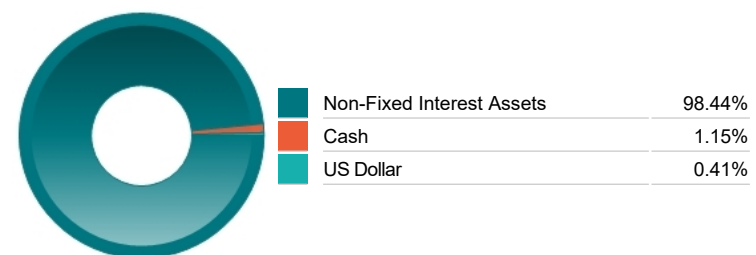
Top Country Breakdown



Breakdown By Market Cap (%)



Fixed Interest Currencies



Important Information

- Because of changes in exchange rates the value of your investment, as well as any money you take from it, can go down as well as up.
- The Industry Classification Benchmark is a product of FTSE International Limited and has been licensed for use.
- "Prudential" is a trading name of The Prudential Assurance Company Limited, which is registered in England and Wales. Registered office at 10 Fenchurch Avenue, London EC3M 5AG. Registered number 15454. Authorised by the Prudential Regulation Authority and regulated by the Financial Conduct Authority and the Prudential Regulation Authority.