

**Benchmark**

Benchmark	MSCI World
Benchmark Category	-
IA Sector	Global

**Identification Codes**

Sedol Code	B41YBW7
Mex Code	-
Isin Code	GB00B41YBW71
Citi Code	LSX6

**Fund Overview**

Mid (13/04/2026)	650.39p
Historic yield	1.38%
Fund size (28/02/2025)	£22703.87m
Number of holdings	28
Ongoing Charges	0.94%
Launch date	01/11/2010

**Fund Charges**

Entry Charge	0.00%
Ongoing Charges	0.94%

**Fund Background**

Valuation frequency	Daily
Valuation point	12:00
Fund type	OEIC
Launch price	£1.00
Fund currency	Pound Sterling
Fund domicile	United Kingdom
ISA allowable	Yes
SIPP allowable	Yes

**Dealing**

Minimum Investment	£5000000
Minimum Top Up	£5000
Minimum Regular Saving	-
Settlement Period: Buy	4 days
Settlement Period: Sell	4 days
Pricing Basis	Forward
Dealing Decimals	4

**Distribution Dates**

Ex dividend date(s)	Income payment date(s)
31 December	28 February
30 June	31 August

**Aims**

Long term growth in value

**Performance**



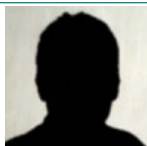
**Discrete performance - to last month end**

	31/03/21 to 31/03/22	31/03/22 to 31/03/23	31/03/23 to 31/03/24	31/03/24 to 31/03/25	31/03/25 to 31/03/26
Fund	9.3%	2.2%	15.3%	-6.2%	-5.1%
Sector	8.4%	-2.6%	16.7%	-0.3%	13.4%
Rank	201/437	54/471	332/498	468/529	543/568
Quartile	2	1	3	4	4

**Annualised performance**

	Annualised		
	3 Years to 31/03/26	5 Years to 31/03/26	10 Years to 31/03/26
Fund	0.9%	2.8%	10.0%
Sector	9.7%	6.9%	10.2%
Rank	466/498	350/437	152/266
Quartile	4	4	3

**Fund Managers**



Name: Terry Smith  
 Manager for: 15 years, 5 months

**Ratings**

FE Crown



**Group Details**

Group name	Fundsmith LLP
Group address	52-54 Gracechurch Street, London, EC3V 0EH
Group telephone	0330 123 1815
Dealing telephone	-
Email	-
Homepage	www.fundsmith.co.uk
Fax number	-

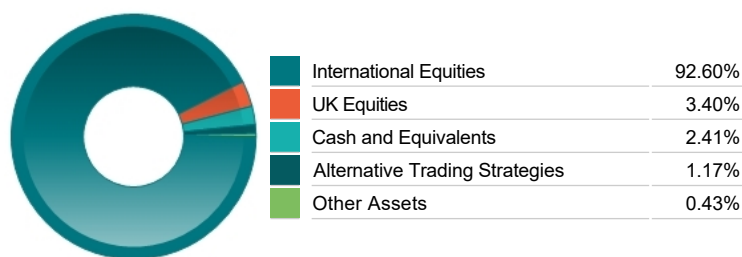
**Important Information**

- Source of portfolio data: Broadridge. Source of performance data: FE fundinfo. We can't predict the future. Past performance isn't a guide to future performance. The figures shown are intended only to demonstrate performance history of the fund, after allowing for the impact of ongoing charges, but take no account of product charges. Ongoing charges may vary in the future and may be higher than they are now. Fund performance is based upon the movement of the daily price and is shown as total return in GBP with income reinvested. The value of your investment can go down as well as up so you might get back less than you put in.
- This factsheet is for information purposes only. If there is information or terminology included that you would like to discuss, then please contact an adviser. Investors should refer to their policy documentation and supporting brochures for fund availability, investment strategy, any product information and charges. Every care has been taken in populating this output, however it must be appreciated that neither Broadridge, Prudential nor their sources guarantee the accuracy, adequacy or completeness of this information or make any warranties regarding results from its usage.

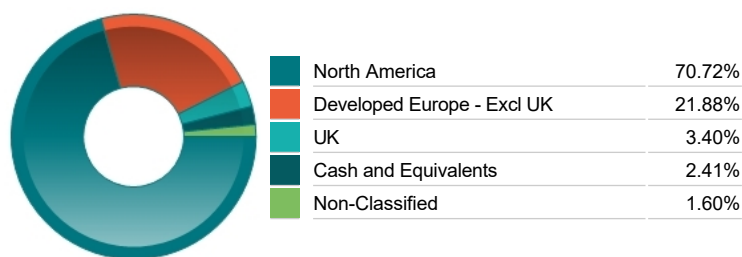
Top 10 Holdings

Name	% Weight	Sector	Country
1 META PLATFORMS	8.81%	Software & Computer Services	United States
2 MICROSOFT CORPORATION	7.14%	Software & Computer Services	United States
3 NOVO NORDISK A/S	6.58%	Pharmaceuticals & Biotechnology	Denmark
4 STRYKER CORPORATION	6.55%	Medical Equipment & Services	United States
5 PHILIP MORRIS INTERNATIONAL	5.71%	Tobacco	United States
6 AUTOMATIC DATA PROCESSING INC	4.93%	Industrial Support Services	United States
7 VISA	4.83%	Industrial Support Services	United States
8 L'OREAL	4.62%	Personal Goods	France
9 WATERS CORPORATION	4.40%	Medical Equipment & Services	United States
10 LVMH MOET HENNESSY LOUIS VUITTON	4.02%	Personal Goods	France

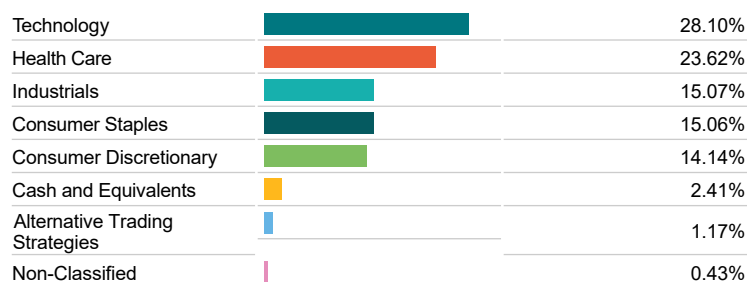
Asset Allocation



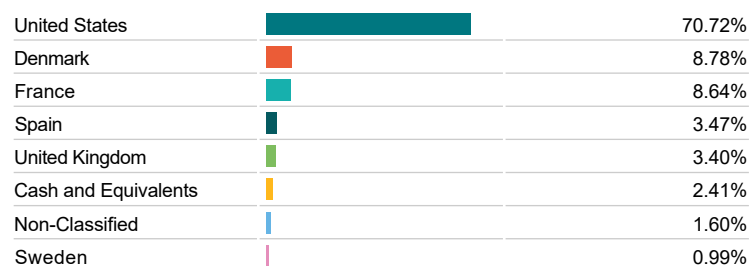
Regional Allocation



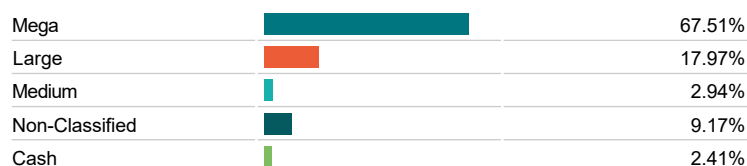
Equity Sector Breakdown



Top Country Breakdown



Breakdown By Market Cap (%)



Important Information

- The Industry Classification Benchmark is a product of FTSE International Limited and has been licensed for use.
- "Prudential" is a trading name of The Prudential Assurance Company Limited, which is registered in England and Wales. Registered office at 10 Fenchurch Avenue, London EC3M 5AG. Registered number 15454. Authorised by the Prudential Regulation Authority and regulated by the Financial Conduct Authority and the Prudential Regulation Authority.