

Benchmark

Benchmark	Composite
ABI Sector	North America Equities

Identification Codes

Sedol Code	0775966
Mex Code	SBAM
Isin Code	GB0007759664
Citi Code	SB34

Fund Overview

Bid (16/06/2025)	1385.20
Offer (16/06/2025)	1458.10
Fund size (30/04/2025)	£47.38m
Number of holdings	873
Launch date	08/04/1991

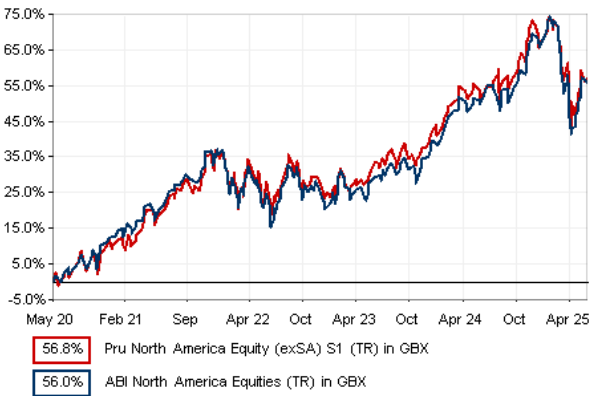
Fund Charges

Annual Management Charge (AMC)	0.75%
Further Costs	0.07%
Yearly Total	0.82%

Aims

Objective: The investment strategy of the fund is to purchase shares in North American companies via other M&G funds. It is a “fund of funds” holding units in several more specialised North American equity funds to give access to a variety of methods for generating investment returns in differing market conditions.

Performance



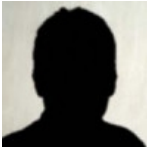
Discrete performance - to last month end

	31/05/20 to 31/05/21	31/05/21 to 31/05/22	31/05/22 to 31/05/23	31/05/23 to 31/05/24	31/05/24 to 31/05/25
Fund	18.5%	7.3%	3.1%	15.7%	3.3%
Sector	20.1%	4.0%	2.4%	16.9%	4.2%
Rank	98/153	78/153	63/153	100/153	100/153
Quartile	3	3	2	3	3

Annualised performance

	Annualised		
	3 Years to 31/05/25	5 Years to 31/05/25	10 Years to 31/05/25
Fund	7.2%	9.4%	9.8%
Sector	7.7%	9.3%	9.7%
Rank	98/153	86/153	89/143
Quartile	3	3	3

Fund Managers



Name: BlackRock
Manager for: 3 years, 8 months

Ratings

FE Crown



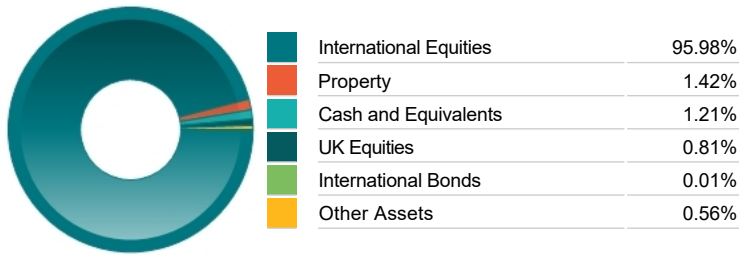
Important Information

- Because of changes in exchange rates the value of your investment, as well as any money you take from it, can go down as well as up.
- Some funds may invest in ‘underlying’ funds or other investment vehicles. The performance of our fund, compared to what it’s invested in won’t be exactly the same. That can be due to additional charges, cash management (needed to help people to enter and leave our fund when they want), tax and the timing of investments (this is known as a fund’s dealing cycle, it varies between managers and can be several days).
- Source of portfolio data: Broadridge. Source of performance data: FE fundinfo. We can’t predict the future. Past performance isn’t a guide to future performance. The figures shown are intended only to demonstrate performance history of the fund, after allowing for the impact of fund charges and further costs, but take no account of product charges, or any Annual Management Charge paid for by the deduction of units. Charges and further costs may vary in the future and may be higher than they are now. Fund performance is based upon the movement of the daily price and is shown as total return in GBP with net income reinvested. The value of your investment can go down as well as up so you might get back less than you put in.
- This factsheet is for information purposes only. If there is information or terminology included that you would like to discuss, then please contact an adviser. Investors should refer to their policy documentation and supporting brochures for fund availability, investment strategy, any product information and charges. Every care has been taken in populating this output, however it must be appreciated that neither Broadridge, Prudential nor their sources guarantee the accuracy, adequacy or completeness of this information or make any warranties regarding results from its usage.

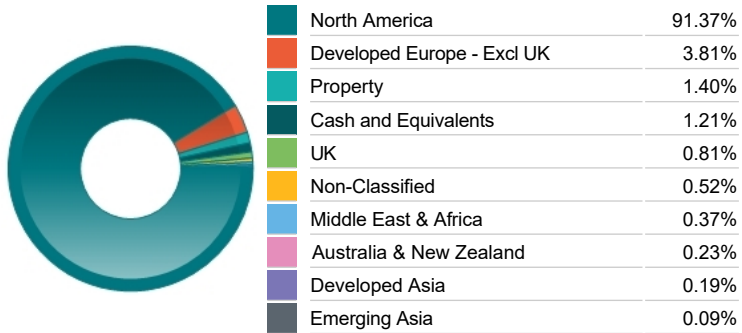
Top 10 Holdings

Name	% Weight	Sector	Country
1 AMAZON.COM	2.75%	Retailers	United States
2 APPLE	2.60%	Technology Hardware & Equipment	United States
3 MICROSOFT CORPORATION	2.59%	Software & Computer Services	United States
4 NVIDIA CORPORATION	2.23%	Technology Hardware & Equipment	United States
5 JPMORGAN CHASE & CO	1.59%	Banks	United States
6 CIGNA GROUP	1.15%	Health Care Providers	United States
7 ALPHABET	1.14%	Software & Computer Services	United States
8 META PLATFORMS	1.11%	Software & Computer Services	United States
9 MASTERCARD INCORPORATED	1.06%	Industrial Support Services	United States
10 ROYAL BANK OF CANADA	0.91%	Banks	Canada

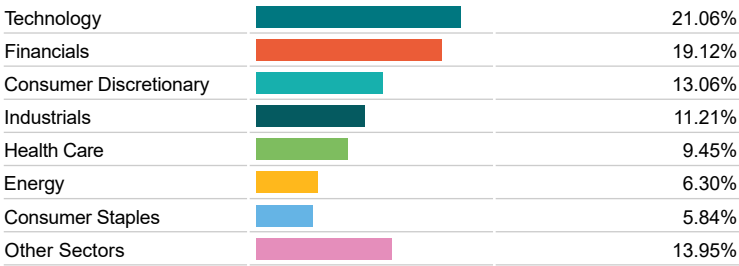
Asset Allocation



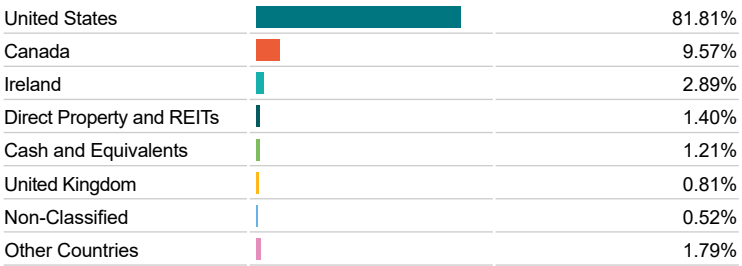
Regional Allocation



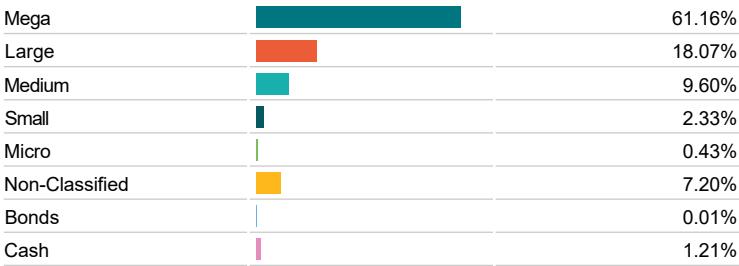
Equity Sector Breakdown



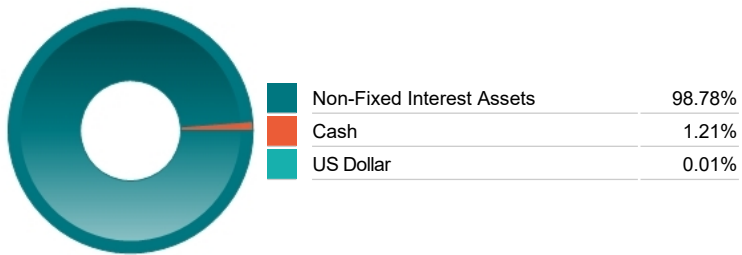
Top Country Breakdown



Breakdown By Market Cap (%)



Fixed Interest Currencies



Important Information

- Because of changes in exchange rates the value of your investment, as well as any money you take from it, can go down as well as up.
- The Industry Classification Benchmark is a product of FTSE International Limited and has been licensed for use.
- 'Prudential' is a trading name of The Prudential Assurance Company Limited, which is registered in England and Wales. Registered office at 10 Fenchurch Avenue, London EC3M 5AG. Registered number 15454. Authorised by the Prudential Regulation Authority and regulated by the Financial Conduct Authority and the Prudential Regulation Authority.