

**Benchmark**

Benchmark	Composite
Sector	ABI Distribution Funds

**Identification Codes**

Sedol Code	0558929
Mex Code	MGBI
Isin Code	GB0005589295
Citi Code	MA87

**Fund Overview**

Bid (16/08/2022)	124.00
Offer (16/08/2022)	130.30
Number of holdings	8379
Launch date	18/04/1994

**Fund Charges**

Annual Management Charge (AMC)	1.00%
Further Costs	0.04%
<b>Yearly Total</b>	<b>1.04%</b>

**Aims**

Objective: The investment strategy of the fund is to provide a combination of income and capital growth by investing in a mixed portfolio of mainly UK and overseas equities, sterling Denominated Corporate Bonds and Gilts. The fund is an actively managed fund of funds, investing in collective investment schemes. The fund may also hold cash deposits depending on the investment conditions.

**Performance**



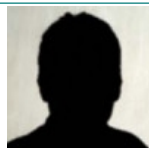
**Discrete performance - to last month end**

	31/07/17 to 31/07/18	31/07/18 to 31/07/19	31/07/19 to 31/07/20	31/07/20 to 31/07/21	31/07/21 to 31/07/22
Fund	3.0%	2.3%	-4.5%	11.9%	-4.5%
Sector	2.5%	1.6%	-7.2%	10.8%	-3.5%
Rank	17/31	17/31	7/35	14/35	23/35
Quartile	3	3	1	2	3

**Annualised performance**

	3 Years to 31/07/22	Annualised 5 Years to 31/07/22	10 Years to 31/07/22
Fund	0.7%	1.5%	4.1%
Sector	-0.3%	0.7%	3.3%
Rank	12/35	14/31	16/31
Quartile	2	2	2

**Fund Managers**



Name: M&G Treasury & Investment Office  
 Manager for: 7 years, 8 months

**Ratings**

FE Crown



**Important Information**

- Because of changes in exchange rates the value of your investment, as well as any money you take from it, can go down as well as up.
- Some funds may invest in 'underlying' funds or other investment vehicles. The performance of our fund, compared to what it's invested in won't be exactly the same. That can be due to additional charges, cash management (needed to help people to enter and leave our fund when they want), tax and the timing of investments (this is known as a fund's dealing cycle, it varies between managers and can be several days).
- Source of portfolio data: Broadridge. Source of performance data: FE fundinfo. We can't predict the future. Past performance isn't a guide to future performance. The figures shown are intended only to demonstrate performance history of the fund, after allowing for the impact of fund charges and further costs, but take no account of product charges, or any Annual Management Charge paid for by the deduction of units. Charges and further costs may vary in the future and may be higher than they are now. Fund performance is based upon the movement of the daily price and is shown as total return in GBP with net income reinvested. The value of your investment can go down as well as up so you might get back less than you put in.
- This factsheet is for information purposes only. If there is information or terminology included that you would like to discuss, then please contact an adviser. Investors should refer to their policy documentation and supporting brochures for fund availability, investment strategy, any product information and charges. Every care has been taken in populating this output, however it must be appreciated that neither Broadridge, Prudential nor their sources guarantee the accuracy, adequacy or completeness of this information or make any warranties regarding results from its usage.

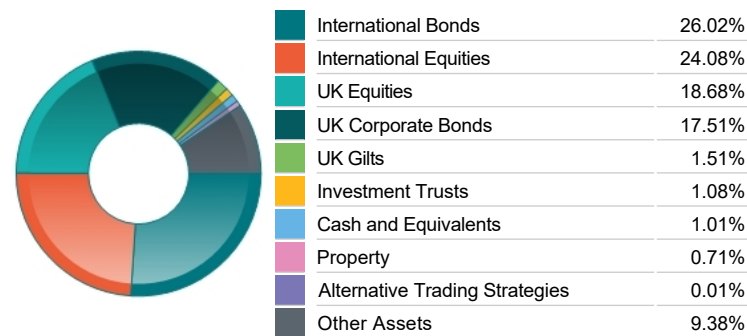
## Top 10 Fund Holdings

Name	% Weight
1 M&G (1) Sterling Investment Grade Corporate Bond Class Z2A GBP	43.93%
2 M&G (ACS) UK All Share Index Fund Z1B Acc	8.70%
3 M&G (ACS) UK 200 Index Fund Z1B Acc	8.64%
4 M&G (ACS) Blackrock US Equity Z1B	6.06%
5 M&G (1) Asia Pacific (ex Japan) Equity Class GBPZ2A	6.04%
6 M&G (ACS) UK Listed Equity Fund Z1B Acc	4.64%
7 M&G (LUX) FCP Europe ex UK Equity Fund Z1B Acc	4.30%
8 M&G (ACS) Japan Equity Fund Z1B Acc	2.82%
9 M&G Emerging Markets Bond Class PP GBP	2.61%
10 Eastspring Asian Local Bond Class E	2.07%

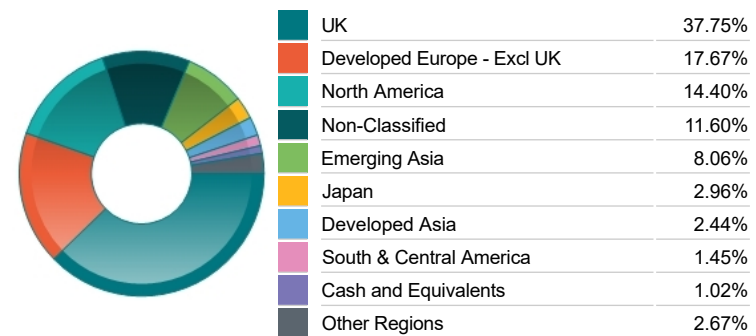
## Top 10 Holdings

Name	% Weight
1 ASTRAZENECA	1.01%
2 HSBC HOLDINGS	0.67%
3 GLAXOSMITHKLINE	0.61%
4 4¼% Treasury Stock 2032	0.61%
5 SHELL	0.61%
6 3¼% Treasury Gilt 2044	0.57%
7 BP	0.57%
8 INT BK REC 1% 21/12/2029	0.54%
9 BRITISH AMERICAN TOBACCO	0.53%
10 UNILEVER	0.52%

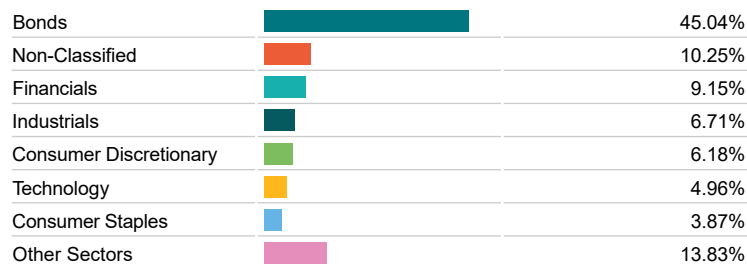
## Asset Allocation



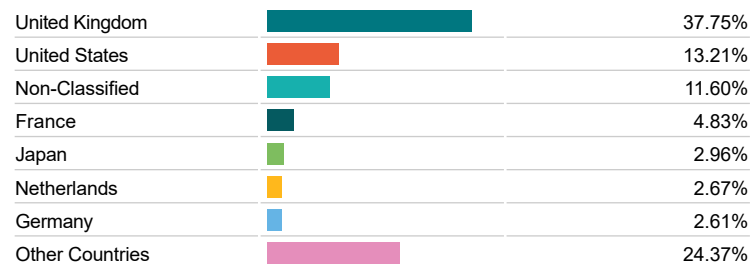
## Regional Allocation



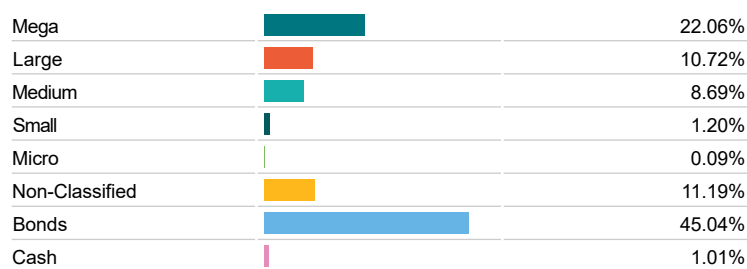
## Sector Breakdown



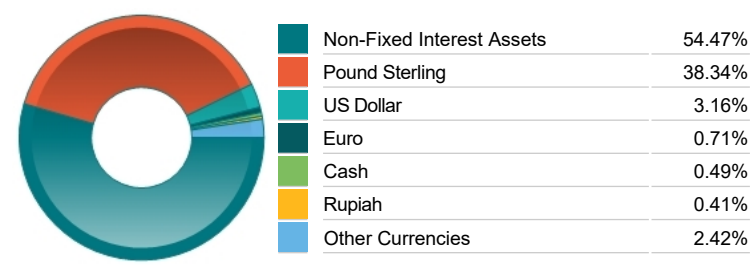
## Top Country Breakdown



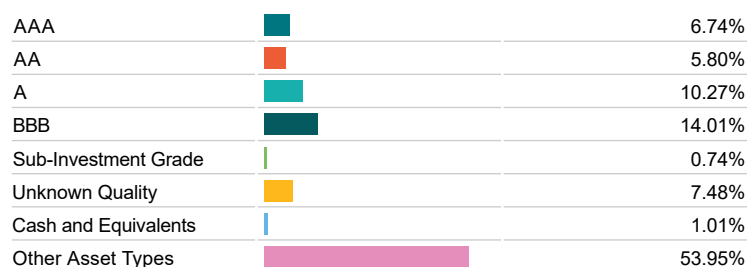
## Breakdown By Market Cap (%)



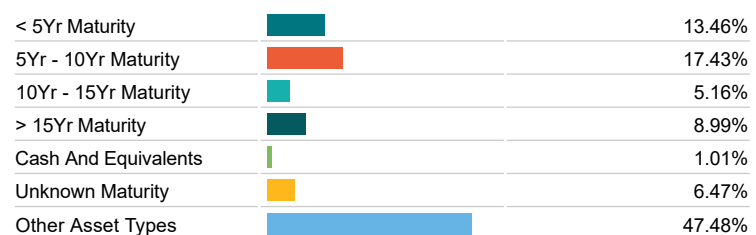
## Fixed Interest Currencies



## Fixed Interest Quality Profile



## Fixed Interest Maturity Profile



## Important Information

- Because of changes in exchange rates the value of your investment, as well as any money you take from it, can go down as well as up.
- The Industry Classification Benchmark is a product of FTSE International Limited and has been licensed for use.
- "Prudential" is a trading name of The Prudential Assurance Company Limited, which is registered in England and Wales. Registered office at 10 Fenchurch Avenue, London EC3M 5AG. Registered number 15454. Authorised by the Prudential Regulation Authority and regulated by the Financial Conduct Authority and the Prudential Regulation Authority.