

Benchmark

The Fund targets a gross return of 5% per annum above 3 month SONIA (ICE 3 month Term Sterling Overnight Index Average Reference Rate) over a rolling 3 year period.

Sector: ABI Specialist

Identification Codes

Sedol Code	BDQYTQ5
Mex Code	PUM00L
Isin Code	GB00BDQYTQ57
Citi Code	P9RU

Fund Overview

Bid	n/a
Offer (05/08/2022)	82.10
Fund size (30/06/2022)	£2.37m
Underlying Fund size	£843.84m
Number of holdings	1282
Launch date	10/07/2018

Fund Charges

Annual Management Charge (AMC)	2.27%
Further Costs	0.00%
Yearly Total	2.27%

Aims

Objective: The investment strategy of the fund is to buy units in the Invesco Global Targeted Returns Fund (UK) - the underlying fund.

Underlying Fund :The fund aims to achieve a positive total return in all market conditions over a rolling 3 year period. The fund targets a gross return of 5% p.a. above UK 3 month SONIA (the Target Benchmark) and aims to achieve this with less than half the volatility (a measure of the size of short term changes in the value of an investment) of global equities as measured by the MSCI World Index GBP Hedged Net Total Return (the Constraining Benchmark), over the same rolling 3 year period.

Performance



Discrete performance - to last month end

	31/07/17 to 31/07/18	31/07/18 to 31/07/19	31/07/19 to 31/07/20	31/07/20 to 31/07/21	31/07/21 to 31/07/22
Fund	n/a	-4.1%	-1.9%	-3.0%	-8.0%

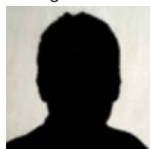
Annualised performance

	Annualised		
	3 Years to 31/07/22	5 Years to 31/07/22	10 Years to 31/07/22
Fund	-4.3%	n/a	n/a

Fund Managers



Name: Sebastian Mackay Georgina Taylor Richard Batty
 Manager of the underlying fund for: 2 years, 6 months 1 years, 2 months 8 years, 10 months



Gwilym Satchell
 4 years, 5 months

Ratings

FE Crown

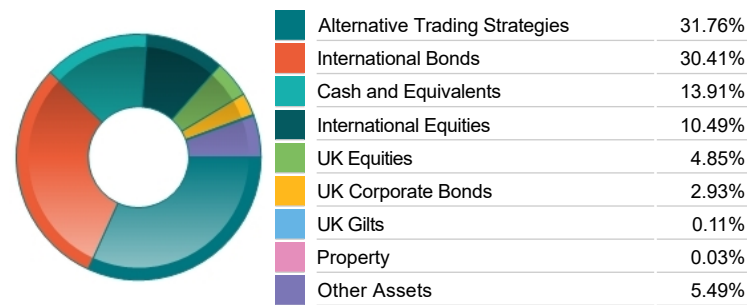
Important Information

- Because of changes in exchange rates the value of your investment, as well as any money you take from it, can go down as well as up.
- Some funds may invest in 'underlying' funds or other investment vehicles. The performance of our fund, compared to what it's invested in won't be exactly the same. That can be due to additional charges, cash management (needed to help people to enter and leave our fund when they want), tax and the timing of investments (this is known as a fund's dealing cycle, it varies between managers and can be several days).
- Source of portfolio data: Broadridge. Source of performance data: FE fundinfo. We can't predict the future. Past performance isn't a guide to future performance. The figures shown are intended only to demonstrate performance history of the fund, after allowing for the impact of fund charges and further costs, but take no account of product charges, or any Annual Management Charge paid for by the deduction of units. Charges and further costs may vary in the future and may be higher than they are now. Fund performance is based upon the movement of the daily price and is shown as total return in GBP with net income reinvested. The value of your investment can go down as well as up so you might get back less than you put in.
- This factsheet is for information purposes only. If there is information or terminology included that you would like to discuss, then please contact an adviser. Investors should refer to their policy documentation and supporting brochures for fund availability, investment strategy, any product information and charges. Every care has been taken in populating this output, however it must be appreciated that neither Broadridge, Prudential nor their sources guarantee the accuracy, adequacy or completeness of this information or make any warranties regarding results from its usage.

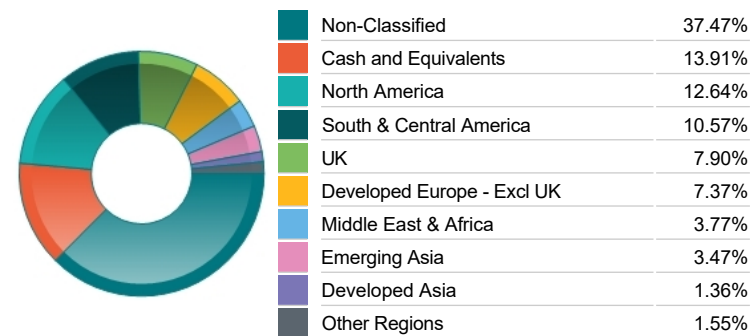
Top 10 Holdings

Name	% Weight	Sector	Country
1 MEX BONOS DESARR RT 8.500 MAY 31 29	5.50%	Bonds	Mexico
2 MEXICO(UTD MEX ST) 7.750 MAY 29 31	4.49%	Bonds	Mexico
3 Invesco Sterling Liquidity Agency Class	3.81%	Managed Funds	Non-Classified
4 STH AFRICA(REP OF) 8.000 JAN 31 30	1.90%	Bonds	South Africa
5 STH AFRICA(REP OF) 8.250 MAR 31 32	1.66%	Bonds	South Africa
6 COMMONWEALTH BAN C/D 0.520 OCT 14 22	0.59%	Bonds	Australia
7 CO-OPERATIVE BK HLDS NPV	0.36%	Non-Classified	United Kingdom
8 TAIWAN SEMICONDUCTOR MANUFACTURING CO.	0.34%	Technology Hardware & Equipment	Taiwan
9 TENCENT HLDGS LTD	0.32%	Software & Computer Services	Hong Kong
10 TOTAL SE	0.29%	Non-Renewable Energy	France

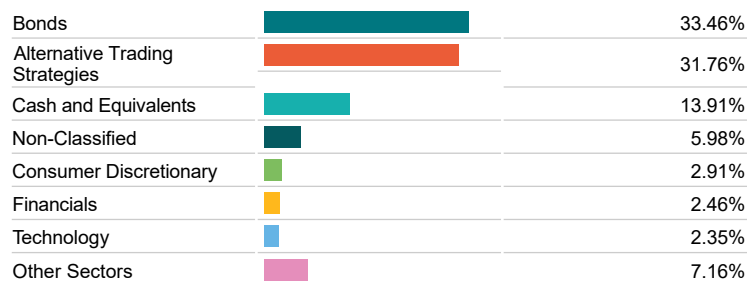
Asset Allocation



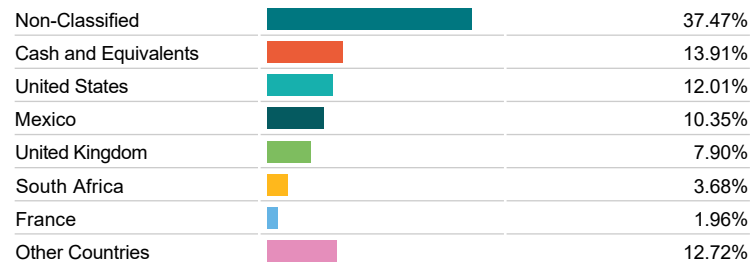
Regional Allocation



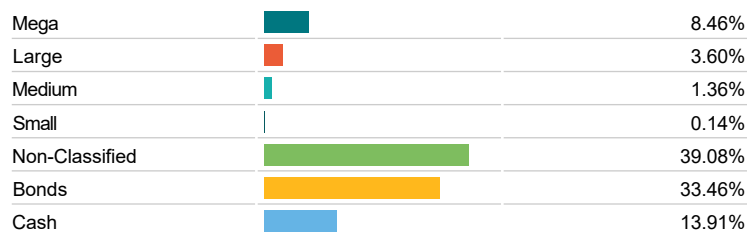
Bond Sector Breakdown



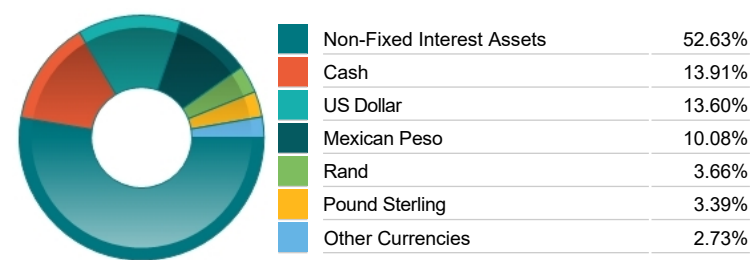
Top Country Breakdown



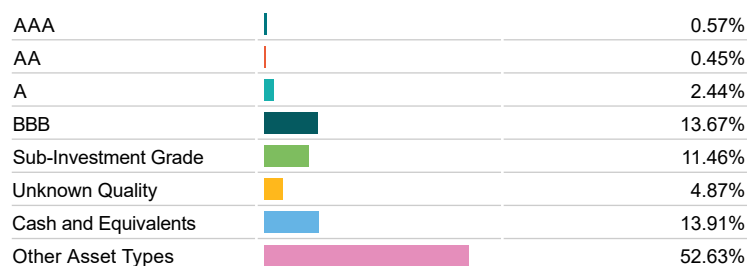
Breakdown By Market Cap (%)



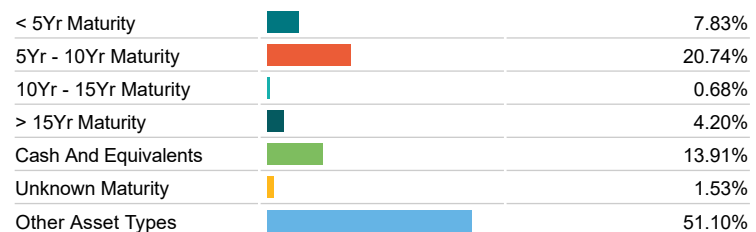
Fixed Interest Currencies



Fixed Interest Quality Profile



Fixed Interest Maturity Profile



Important Information

- Because of changes in exchange rates the value of your investment, as well as any money you take from it, can go down as well as up.
- The Industry Classification Benchmark is a product of FTSE International Limited and has been licensed for use.
- "Prudential" is a trading name of The Prudential Assurance Company Limited, which is registered in England and Wales. Registered office at 10 Fenchurch Avenue, London EC3M 5AG. Registered number 15454. Authorised by the Prudential Regulation Authority and regulated by the Financial Conduct Authority and the Prudential Regulation Authority.