

Benchmark

Benchmark	S&P 500 NR (net of 15% withholding tax)
Benchmark Category	-
IA Sector	North America

Identification Codes

Sedol Code	BMMV510
Mex Code	PKPPK2
Isin Code	GB00BMMV5105
Citi Code	KRMC

Fund Overview

Mid (09/04/2026)	491.07p
Historic yield	0.00%
Fund size (31/12/2025)	£1551.93m
Number of holdings	51
Ongoing Charges	0.84%
Launch date	19/09/2014

Fund Charges

Entry Charge	0.00%
Ongoing Charges	0.84%

Fund Background

Valuation frequency	Daily
Valuation point	12:00
Fund type	OEIC
Launch price	100.00p
Fund currency	Pound Sterling
Fund domicile	United Kingdom
ISA allowable	Yes
SIPP allowable	Yes

Dealing

Minimum Investment	£250000
Minimum Top Up	£500
Minimum Regular Saving	-
Settlement Period: Buy	4 days
Settlement Period: Sell	4 days
Pricing Basis	Forward
Dealing Decimals	-

Distribution Dates

Ex dividend date(s)	Income payment date(s)
01 March	30 April

Aims

To grow capital over a five year period.

Performance



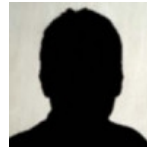
Discrete performance - to last month end

	31/03/21 to 31/03/22	31/03/22 to 31/03/23	31/03/23 to 31/03/24	31/03/24 to 31/03/25	31/03/25 to 31/03/26
Fund	12.2%	-11.9%	43.9%	-5.9%	21.2%
Sector	16.1%	-4.0%	25.1%	2.2%	11.8%
Rank	151/220	203/235	8/243	238/251	29/271
Quartile	3	4	1	4	1

Annualised performance

	Annualised		
	3 Years to 31/03/26	5 Years to 31/03/26	10 Years to 31/03/26
Fund	18.0%	10.2%	14.4%
Sector	12.7%	9.8%	12.9%
Rank	39/243	102/220	30/144
Quartile	1	2	1

Fund Managers



Name:	Cormac Weldon	Chris Kent
Manager for:	11 years, 6 months	3 years, 7 months

Ratings

FE Crown



Group Details

Group name	Artemis Fund Managers Limited
Group address	Cassini House 57 St James's Street SW1A 1LD
Group telephone	0800 092 2051
Dealing telephone	0800 092 2090
Email	investorsupport@artemisfunds.com;
Homepage	www.artemisfunds.co.uk
Fax number	020 7399 6497

Important Information

- Source of portfolio data: Broadridge. Source of performance data: FE fundinfo. We can't predict the future. Past performance isn't a guide to future performance. The figures shown are intended only to demonstrate performance history of the fund, after allowing for the impact of ongoing charges, but take no account of product charges. Ongoing charges may vary in the future and may be higher than they are now. Fund performance is based upon the movement of the daily price and is shown as total return in GBP with income reinvested. The value of your investment can go down as well as up so you might get back less than you put in.
- This factsheet is for information purposes only. If there is information or terminology included that you would like to discuss, then please contact an adviser. Investors should refer to their policy documentation and supporting brochures for fund availability, investment strategy, any product information and charges. Every care has been taken in populating this output, however it must be appreciated that neither Broadridge, Prudential nor their sources guarantee the accuracy, adequacy or completeness of this information or make any warranties regarding results from its usage.

Top 10 Holdings

Name	% Weight	Sector	Country
1 NVIDIA CORPORATION	8.91%	Technology Hardware & Equipment	United States
2 ALPHABET	6.76%	Software & Computer Services	United States
3 MICROSOFT CORPORATION	6.30%	Software & Computer Services	United States
4 AMAZON.COM	5.39%	Retailers	United States
5 APPLE	4.36%	Technology Hardware & Equipment	United States
6 GOLDMAN SACHS GROUP INC. (THE)	4.01%	Investment Banking & Brokerage Services	United States
7 PARKER-HANNIFIN CORPORATION	3.63%	General Industrials	United States
8 ELI LILLY AND COMPANY	3.31%	Pharmaceuticals & Biotechnology	United States
9 WALMART	3.16%	Retailers	United States
10 BANK OF NEW YORK MELLON CORPORATION (THE)	3.11%	Investment Banking & Brokerage Services	United States

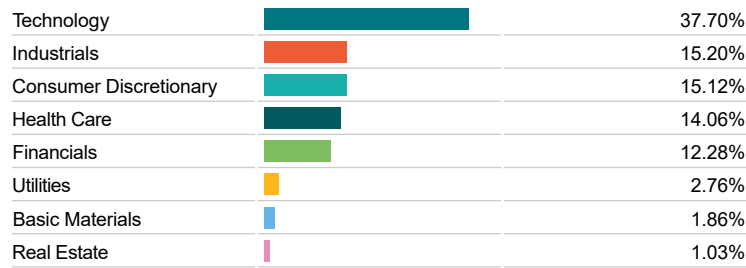
Asset Allocation



Regional Allocation



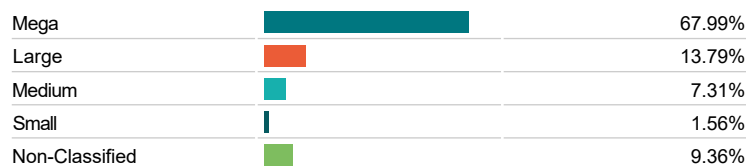
Equity Sector Breakdown



Top Country Breakdown



Breakdown By Market Cap (%)



Important Information

- The Industry Classification Benchmark is a product of FTSE International Limited and has been licensed for use.
- "Prudential" is a trading name of The Prudential Assurance Company Limited, which is registered in England and Wales. Registered office at 10 Fenchurch Avenue, London EC3M 5AG. Registered number 15454. Authorised by the Prudential Regulation Authority and regulated by the Financial Conduct Authority and the Prudential Regulation Authority.