

Benchmark

Benchmark	Not benchmarked
Sector	OI Money Market

Identification Codes

Sedol Code	B06HQ17
Mex Code	SBDEPO
Isin Code	IE00B06HQ170
Citi Code	VY84

Fund Overview

Bid (12/07/2024)	0.55
Offer (12/07/2024)	0.58
Fund size (31/05/2024)	€1.05m
Number of holdings	1
Launch date	08/12/2004

Fund Charges

Annual Management Charge (AMC)	0.95%
Further Costs	0.00%
Yearly Total	0.95%

Aims

Objective: The investment strategy of the fund is to provide a return consistent with investing in interest bearing deposits and high quality short-term fixed interest securities, before charges. Fund Investments: Can invest in Euro denominated interest-bearing deposits and high quality short-term fixed interest issues, pooling the cash of investors to achieve fund objectives.

Performance



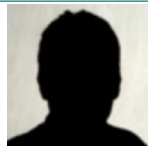
Discrete performance - to last month end

	30/06/19 to 30/06/20	30/06/20 to 30/06/21	30/06/21 to 30/06/22	30/06/22 to 30/06/23	30/06/23 to 30/06/24
Fund	-1.4%	-1.4%	-1.6%	-1.1%	-0.9%
Sector	0.3%	-0.4%	2.7%	-0.4%	4.0%
Rank	85/143	76/150	107/152	95/153	143/155
Quartile	3	3	3	3	4

Annualised performance

	Annualised		
	3 Years to 30/06/24	5 Years to 30/06/24	10 Years to 30/06/24
Fund	-1.2%	-1.3%	-1.2%
Sector	2.1%	1.2%	0.9%
Rank	133/151	126/142	90/117
Quartile	4	4	4

Fund Managers



Name: SS&C Life & Pension
Manager for: 28 years, 9 months

Ratings

FE Crown



Important Information

- Because of changes in exchange rates the value of your investment, as well as any money you take from it, can go down as well as up.
- Some funds may invest in 'underlying' funds or other investment vehicles. The performance of our fund, compared to what it's invested in won't be exactly the same. That can be due to additional charges, cash management (needed to help people to enter and leave our fund when they want), tax and the timing of investments (this is known as a fund's dealing cycle, it varies between managers and can be several days).
- Source of portfolio data: Broadridge. Source of performance data: FE fundinfo. We can't predict the future. Past performance isn't a guide to future performance. The figures shown are intended only to demonstrate performance history of the fund, after allowing for the impact of fund charges and further costs, but take no account of product charges, or any Annual Management Charge paid for by the deduction of units. Charges and further costs may vary in the future and may be higher than they are now. Fund performance is based upon the movement of the daily price and is shown as total return in the fund's currency of denomination with gross income reinvested. The value of your investment can go down as well as up so you might get back less than you put in.
- This factsheet is for information purposes only. If there is information or terminology included that you would like to discuss, then please contact an adviser. Investors should refer to their policy documentation and supporting brochures for fund availability, investment strategy, any product information and charges. Every care has been taken in populating this output, however it must be appreciated that neither Broadridge, Prudential nor their sources guarantee the accuracy, adequacy or completeness of this information or make any warranties regarding results from its usage.

Holdings

Name	% Weight	Sector	Country
1 Cash	100.00%	Managed Funds	Non-Classified

Asset Allocation



Regional Allocation



Equity Sector Breakdown



Top Country Breakdown



Important Information

- Because of changes in exchange rates the value of your investment, as well as any money you take from it, can go down as well as up.
- The Industry Classification Benchmark is a product of FTSE International Limited and has been licensed for use.
- The registered office of Prudential International is in Ireland at Fitzwilliam Court, Leeson CI, Dublin 2, D02 TC95. Prudential International is a marketing name of Prudential International Assurance plc, a life assurance company operating from Ireland. Registration No. 209956. Prudential International Assurance plc is authorised and regulated by the Central Bank of Ireland and in the context of its UK regulated activities only, is authorised by the Prudential Regulation Authority and subject to regulation by the Financial Conduct Authority and limited regulation by the Prudential Regulation Authority. Details about the extent of our regulation by the Prudential Regulation Authority are available from us on request. Prudential International is part of the same corporate group as The Prudential Assurance Company Limited. Both The Prudential Assurance Company Limited and Prudential International are direct and indirect subsidiaries respectively of M&G plc, a company incorporated in the United Kingdom. The Prudential Assurance Company Limited is not affiliated in any manner with Prudential Financial, Inc, a company whose principal place of business is in the United States of America or Prudential plc, an international group incorporated in the United Kingdom.