

**Benchmark**

Benchmark	Composite
ABI Sector	Mixed Investment 40-85% Shares

**Identification Codes**

Sedol Code	B02SR22
Mex Code	PUMAP
Isin Code	GB00B02SR224
Citi Code	ILF2

**Fund Overview**

Bid (16/04/2021)	3210.10
Offer (16/04/2021)	3379.10
Fund size (28/02/2021)	£1579.04m
Underlying Fund size	£1579.04m
Number of holdings	2606
Launch date	31/08/2004

**Fund Charges**

Annual Management Charge (AMC)	1.00%
Further Costs	0.05%
<b>Yearly Total</b>	<b>1.05%</b>

**Aims**

Objective: The investment strategy of the fund is to provide medium to long-term growth (the combination of income and growth of capital) by investing mainly in a broad spread of Prudential's investment-linked funds and collective investment schemes. The fund will typically have exposure to a range of asset types, including UK and overseas equities, fixed interest and commercial property.

**Performance**



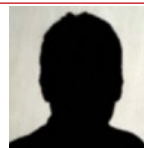
**Discrete performance - to last month end**

	31/03/16 to 31/03/17	31/03/17 to 31/03/18	31/03/18 to 31/03/19	31/03/19 to 31/03/20	31/03/20 to 31/03/21
Fund	21.3%	1.1%	5.4%	-10.0%	26.4%
Sector	17.9%	0.8%	4.4%	-7.0%	23.9%
Rank	117/588	251/596	283/606	462/618	196/641
Quartile	1	2	2	3	2

**Annualised performance**

	Annualised		
	3 Years to 31/03/21	5 Years to 31/03/21	10 Years to 31/03/21
Fund	6.2%	8.0%	7.5%
Sector	6.4%	7.4%	6.2%
Rank	279/607	181/588	37/454
Quartile	2	2	1

**Fund Managers**



Name: M&G Treasury & Investment Office  
 Manager of the underlying fund for: 6 years, 4 months

**Ratings**

FE Crown



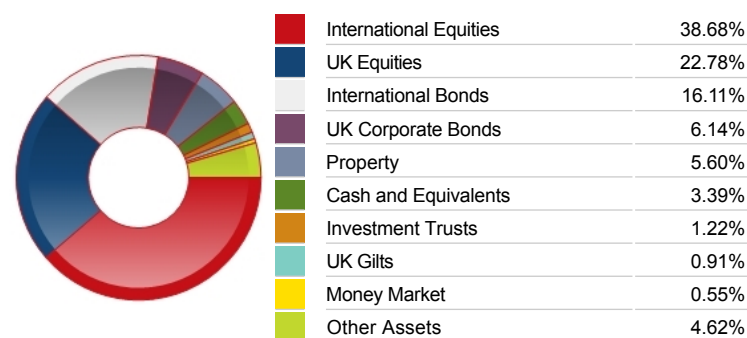
**Important Information**

- Because of changes in exchange rates the value of your investment, as well as any money you take from it, can go down as well as up.
- Some funds may invest in 'underlying' funds or other investment vehicles. The performance of our fund, compared to what it's invested in won't be exactly the same. That can be due to additional charges, cash management (needed to help people to enter and leave our fund when they want), tax and the timing of investments (this is known as a fund's dealing cycle, it varies between managers and can be several days).
- Source of portfolio data: Broadridge. Source of performance data: FE fundinfo. We can't predict the future. Past performance isn't a guide to future performance. The figures shown are intended only to demonstrate performance history of the fund, after allowing for the impact of fund charges and further costs, but take no account of product charges, or any Annual Management Charge paid for by the deduction of units. Charges and further costs may vary in the future and may be higher than they are now. Fund performance is based upon the movement of the daily price and is shown as total return in GBP with gross income reinvested. The value of your investment can go down as well as up so you might get back less than you put in.
- This factsheet is for information purposes only. If there is information or terminology included that you would like to discuss, then please contact an adviser. Investors should refer to their policy documentation and supporting brochures for fund availability, investment strategy, any product information and charges. Every care has been taken in populating this output, however it must be appreciated that neither Broadridge, Prudential nor their sources guarantee the accuracy, adequacy or completeness of this information or make any warranties regarding results from its usage.

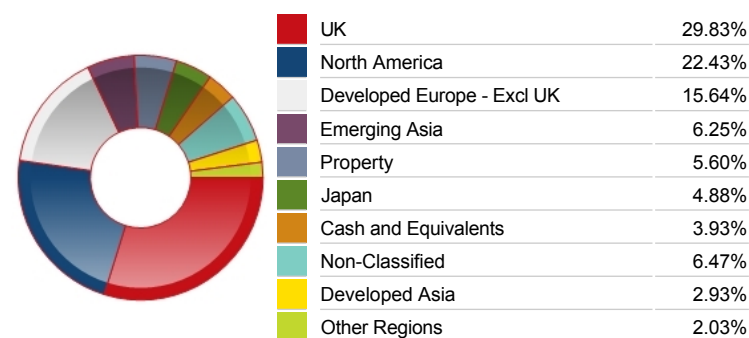
Top 10 Holdings

Name	% Weight	Sector	Country
1 TAIWAN SEMICONDUCTOR MANUFACTURING	0.80%	Technology Hardware & Equipment	Taiwan
2 SAMSUNG ELECTRONICS CO	0.75%	Technology Hardware & Equipment	South Korea
3 TENCENT HLDGS LTD	0.74%	Software & Computer Services	Hong Kong
4 RIO TINTO	0.64%	Industrial Metals & Mining	United Kingdom
5 APPLE INC	0.63%	Technology Hardware & Equipment	United States
6 ASTRAZENECA	0.63%	Pharmaceuticals & Biotechnology	United Kingdom
7 ALIBABA GROUP HLDG LTD	0.61%	Retailers	China
8 MICROSOFT CORP	0.61%	Software & Computer Services	United States
9 UNILEVER	0.58%	Personal Care, Drug & Grocery Stores	United Kingdom
10 ROYAL DUTCH SHELL	0.55%	Non-Renewable Energy	United Kingdom

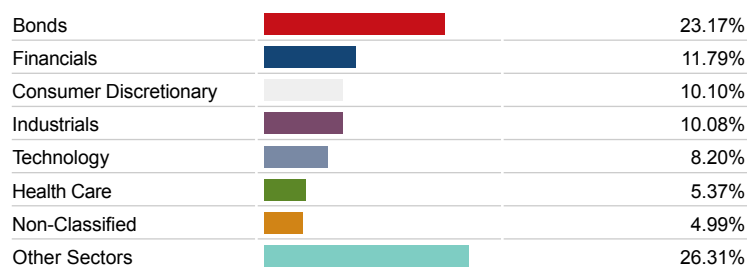
Asset Allocation



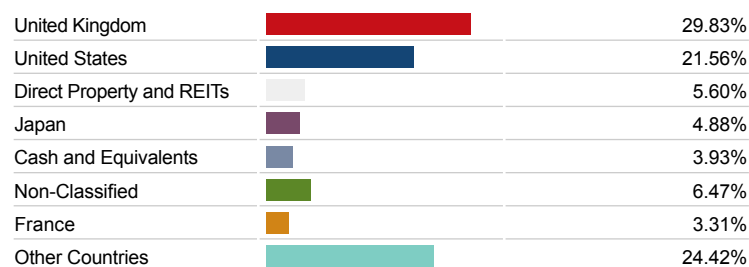
Regional Allocation



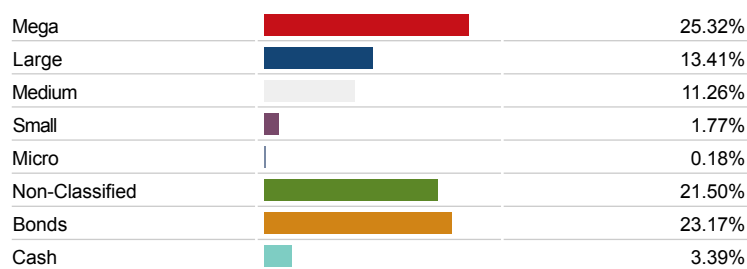
Bond Sector Breakdown



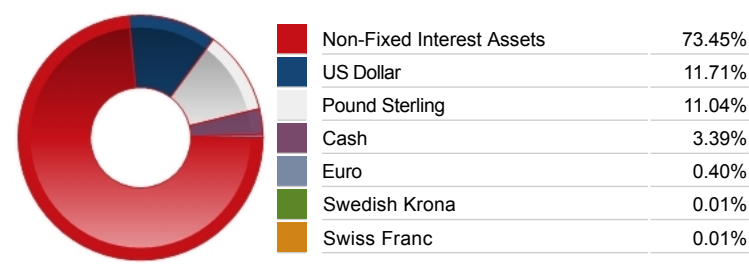
Top Country Breakdown



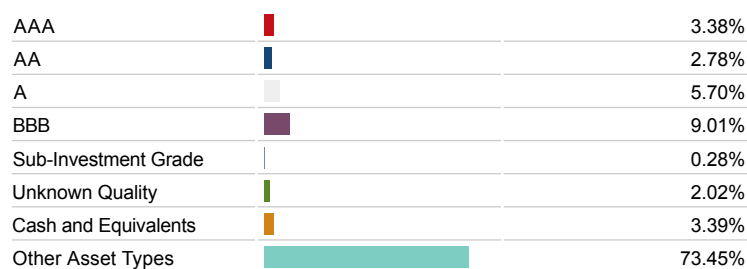
Breakdown By Market Cap (%)



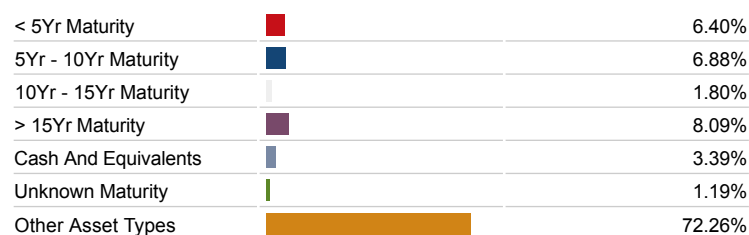
Fixed Interest Currencies



Fixed Interest Quality Profile



Fixed Interest Maturity Profile



Important Information

- Because of changes in exchange rates the value of your investment, as well as any money you take from it, can go down as well as up.
- The Industry Classification Benchmark is a product of FTSE International Limited and has been licensed for use.
- "Prudential" is a trading name of The Prudential Assurance Company Limited, which is registered in England and Wales. Registered office at 10 Fenchurch Avenue, London EC3M 5AG. Registered number 15454. Authorised by the Prudential Regulation Authority and regulated by the Financial Conduct Authority and the Prudential Regulation Authority.