

Benchmark

Benchmark	FTSE All-Share Total Return
Benchmark Category	-
IA Sector	UK All Companies

Identification Codes

Sedol Code	B7LM4J0
Mex Code	YFIAAG
Isin Code	GB00B7LM4J06
Citi Code	12GP

Fund Overview

Mid (23/01/2026)	296.29p
Historic yield	1.71%
Fund size (30/11/2025)	£223.53m
Number of holdings	37
Ongoing Charges	0.84%
Launch date	02/05/2012

Fund Charges

Entry Charge	0.00%
Ongoing Charges	0.84%

Fund Background

Valuation frequency	Daily
Valuation point	-
Fund type	OEIC
Launch price	-
Fund currency	Pound Sterling
Fund domicile	United Kingdom
ISA allowable	Yes
SIPP allowable	Yes

Dealing

Minimum Investment	£1000000
Minimum Top Up	£250000
Minimum Regular Saving	-
Settlement Period: Buy	3 days
Settlement Period: Sell	3 days
Pricing Basis	Forward
Dealing Decimals	3

Distribution Dates

Ex dividend date(s)	Income payment date(s)
01 October	30 November

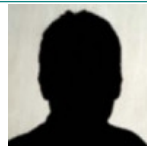
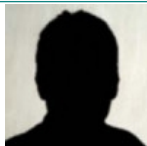
Aims

The Fund aims to provide capital growth (to grow the value of your investment) and income over at least 5 years. The Fund invests primarily (at least two-thirds) in the shares of UK companies (those incorporated in, domiciled in, or that have significant economic exposure to, the UK).

Performance

No data available! Please enter a valid code!

Fund Managers



Name:	Ben Needham	Anna Farmbrough	Simon Brazier
Manager for:	2 years, 11 months	3 years, 9 months	11 years, 2 months

Ratings

FE Crown



Group Details

Group name	Ninety One
Group address	55 Gresham Street London EC2V 7QP
Group telephone	+44 (0) 203 938 1900
Dealing telephone	+44 (0) 203 938 1900
Email	enquiries@ninetyone.com
Homepage	https://ninetyone.com/en/united-kingdom
Fax number	+44 (0) 203 938 1900

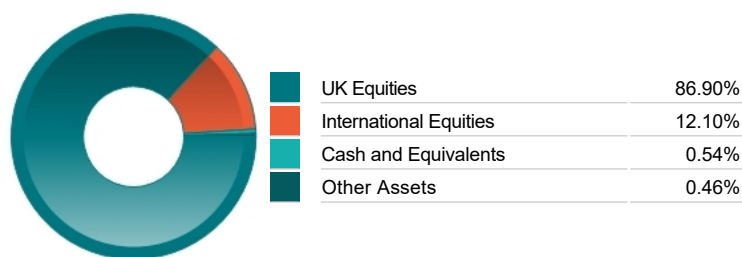
Important Information

- Source of portfolio data: Broadridge. Source of performance data: FE fundinfo. We can't predict the future. Past performance isn't a guide to future performance. The figures shown are intended only to demonstrate performance history of the fund, after allowing for the impact of ongoing charges, but take no account of product charges. Ongoing charges may vary in the future and may be higher than they are now. Fund performance is based upon the movement of the daily price and is shown as total return in GBP with income reinvested. The value of your investment can go down as well as up so you might get back less than you put in.
- This factsheet is for information purposes only. If there is information or terminology included that you would like to discuss, then please contact an adviser. Investors should refer to their policy documentation and supporting brochures for fund availability, investment strategy, any product information and charges. Every care has been taken in populating this output, however it must be appreciated that neither Broadridge, Prudential nor their sources guarantee the accuracy, adequacy or completeness of this information or make any warranties regarding results from its usage.

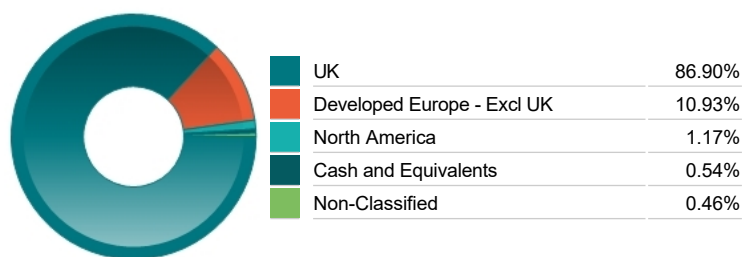
Top 10 Holdings

Name	% Weight	Sector	Country
1 UNILEVER PLC COMMON STOCK GBP.00031111	7.50%	Non-Classified	United Kingdom
2 DIAGEO	7.47%	Beverages	United Kingdom
3 HALEON	5.35%	Pharmaceuticals & Biotechnology	United Kingdom
4 WETHERSPOON(J.D.)	4.92%	Travel & Leisure	United Kingdom
5 LONDON STOCK EXCHANGE GROUP	4.43%	Finance & Credit Services	United Kingdom
6 AMADEUS IT GROUP SA	4.34%	Software & Computer Services	Spain
7 DCC	4.14%	Industrial Support Services	Ireland
8 SPIRAX GROUP	3.80%	Industrial Engineering	United Kingdom
9 CONVATEC GROUP	3.63%	Medical Equipment & Services	United Kingdom
10 WISE	3.45%	Industrial Support Services	United Kingdom

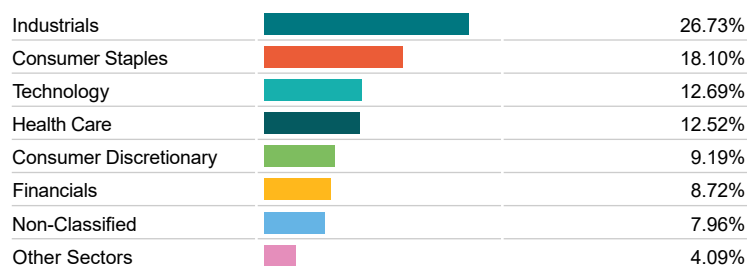
Asset Allocation



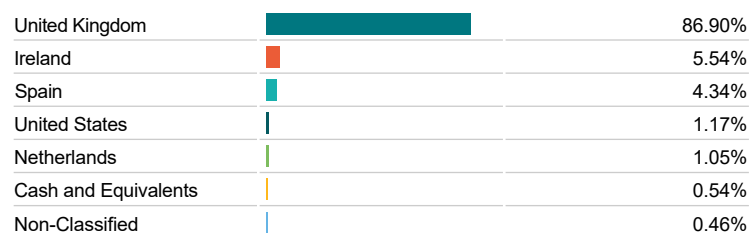
Regional Allocation



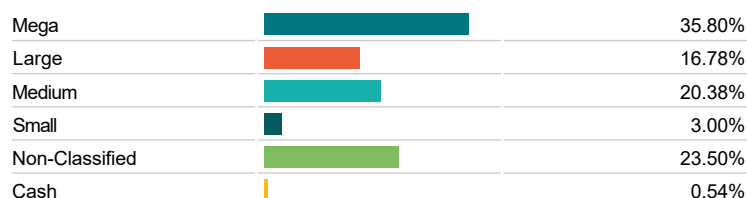
Equity Sector Breakdown



Top Country Breakdown



Breakdown By Market Cap (%)



Important Information

- The Industry Classification Benchmark is a product of FTSE International Limited and has been licensed for use.
- "Prudential" is a trading name of The Prudential Assurance Company Limited, which is registered in England and Wales. Registered office at 10 Fenchurch Avenue, London EC3M 5AG. Registered number 15454. Authorised by the Prudential Regulation Authority and regulated by the Financial Conduct Authority and the Prudential Regulation Authority.