

FTGF Royce US Small Cap Opportunity Fund

Class A GBP DIS (A) • ISIN IE00B23Z8P68

A subfund of: Franklin Templeton Global Funds plc (the "Company")

Managed by: Franklin Templeton International Services S.à r.l., part of the Franklin Templeton group of companies.

Objectives and Investment Policy

Objective

The Fund seeks to achieve long-term capital appreciation.

Investment Policy

- The Fund invests at least 70% of its net asset value in a diversified portfolio of equity securities issued by small-cap and micro-cap US companies (i.e., US companies with stock market capitalisations not greater than that of the largest company (based on market capitalisation) in the Russell 2000 Index at the time of its most recent reconstitution) that are listed or traded on regulated markets in the United States.

- The Fund will invest in shares of companies that the portfolio managers believe are undervalued.

- **Benchmark:** Russell 2000 Value Index

- **Manager's Discretion:** The Fund is actively managed and the investment

manager is not constrained by the benchmark. The Fund uses the benchmark for performance comparison purposes only. While many of the fund's investments will be components of the benchmark, the weightings of the fund's holdings may differ materially from the weightings in the benchmark.

Fund's Base Currency: USD

Share Class Currency: GBP

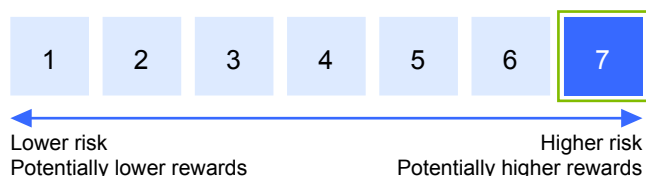
- **Transaction Costs:** The Fund bears costs in buying and selling investments, which may have a material impact on the fund's performance.

Dealing Frequency: You can buy, sell and switch your shares on each day that the New York Stock Exchange is open for business.

Minimum Initial Investment: For this share class the minimum initial investment is GBP 1,000.

Treatment of Income: For this share class all, or some portion of, net income is declared and paid annually to shareholders.

Risk and Reward Profile



The indicator is based on the volatility of the returns (past performance) of the reported share class (calculated on a 5 year rolling return basis). Where a share class is inactive / has less than 5 years of returns, the returns of a representative benchmark are used.

There is no guarantee that the fund will remain in the indicator category shown above and the categorisation of the fund may shift over time. Historical data, which is used in calculating the indicator, may not be a reliable indicator of the future risk profile of this fund.

The lowest category does not mean a risk-free investment.

The fund does not offer any capital guarantee or protection and you may not get back the amount invested.

The fund invests mainly in shares of small cap US companies from various sectors. As a result, the performance of the Fund can fluctuate very significantly over relatively short time periods.

The fund is subject to the following risks which are materially relevant but may not be adequately captured by the indicator:

Concentrated fund: The fund invests in fewer companies than other funds which invest in shares usually do. This means that the fund does not spread its risk as widely as other funds and will therefore be affected more if an individual company has significant losses.

Fund operations: The fund is subject to the risk of loss resulting from inadequate or failed internal processes, people or systems or those of third parties such as those responsible for the custody of its assets, especially to the extent that it invests in developing countries.

Investment in company shares: The fund invests in shares of companies, and the value of these shares can be negatively affected by changes in the company, its industry or the economy in which it operates.

Investment in smaller company shares: The fund buys shares in smaller companies. It may be difficult to sell these shares, in which case the fund may not be able to minimise a loss on such shares.

Class currency: The value of your investment may fall due to changes in the exchange rate between the currency of your share class and the base currency of the fund.

For further explanation on the risks associated with an investment in the fund, please refer to the section entitled "Risk Factors" in the base prospectus and "Primary Risks" in the fund supplement.

Charges

The charges you pay are used to pay the costs of running the fund, including the costs of marketing and distributing it. These charges reduce the potential growth of your investment.

One-off charges taken before or after you invest

Entry charge	5.00%
Exit charge	none

This is the maximum that might be taken out of your money before it is invested (entry charge) and before the proceeds of your investment are paid out (exit charge).

Charges taken from the Fund over a year

Ongoing charge	1.97%
----------------	-------

Charges taken from the Fund under certain specific conditions

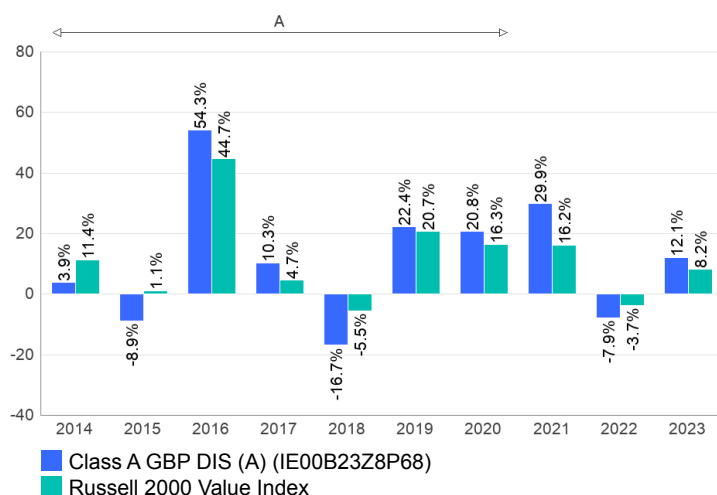
Performance fee	none
-----------------	------

Entry and exit charges shown are the maximum that might be taken out of your money. In some cases, you might pay less and you should speak to your financial adviser about this.

The ongoing charge is based on expenses for the 12 month period ending December 2023. This figure may vary over time.

For more information about charges, please see the "Fees and Expenses" sections of the base prospectus and fund supplement.

Past Performance



A: From 17 May 2021, the Russell 2000 Value Index is used to compare the fund's performance, prior to this date the fund used the Russell 2000 Index

- Past performance is no guide to future returns and may not be repeated.
- The performance reflects all fees and charges payable by the fund but does not reflect any entry or exit charge that might be payable. For performance purposes only, any distributed income has been reinvested.
- Past performance has been calculated in GBP.
- The fund was launched on 08/11/2002 and the share class began issuing shares on 26/04/2011.
- Further information on the fund's performance is available at <https://www.franklinresources.com/all-sites>.

Practical Information

- **Depository:** The Bank of New York Mellon SA/NV, Dublin Branch.
- **Further Information:** Additional information about the fund (including the prospectus, supplement, reports and accounts and the remuneration policy) may be obtained in English. The prospectus, supplement, and the reports and accounts are also available in French, German, Italian and Spanish. The documents are available free of charge upon request to the Administrator: BNY Mellon Fund Services (Ireland) Designated Activity Company, One Dockland Central, Guild Street, International Financial Services Centre, Dublin 1, Ireland and at <https://www.franklinresources.com/all-sites>.
- **Price Publication:** The latest share price is published at <https://www.franklinresources.com/all-sites>.
- **Tax Legislation:** The fund is subject to the tax law and regulation of Ireland. Depending on your own country of residence, this might have an impact on your investment. For further details, please speak to your financial adviser.

- **Liability Statement:** Franklin Templeton International Services S.à r.l. may be held liable solely on the basis of any statement contained in this document that is misleading, inaccurate or inconsistent with the relevant parts of the prospectus for the fund.
- **Structure:** Franklin Templeton Global Funds plc has a number of different sub-funds. The assets and liabilities of each sub-fund are segregated by law from the assets and liabilities of each other sub-fund. The prospectus and the periodic reports are prepared for Franklin Templeton Global Funds plc as a whole.
- **Switching Between Funds:** You may apply for shares in this fund to be exchanged for another class within the same fund or to another class in other funds of Franklin Templeton Global Funds plc, subject to certain conditions (see "Exchanges of Shares" in the prospectus). The fund itself does not charge a switching fee for the exchange of shares of one fund for the same class of shares of another fund or for shares of a different share class of the same fund. Certain dealers, however, may charge a switching fee – please ask your dealer.