

# Key Investor Information

This document provides you with key investor information about this fund. It is not marketing material. The information is required by law to help you understand the nature and the risks of investing in this fund. You are advised to read it so you can make an informed decision about whether to invest.

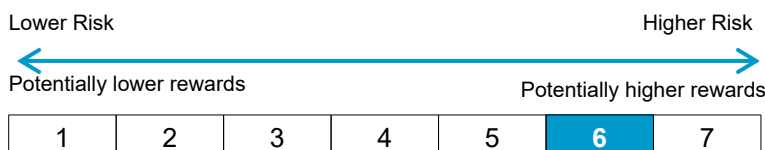
## L&G Europe ex UK Equity UCITS ETF

Share Class EUR Accumulating ETF - ISIN: IE00BFXR5V83. The Fund is a sub-fund of Legal & General UCITS ETF Plc (the "**Company**").  
Managed by LGIM Managers (Europe) Limited, a member of the Legal & General group (the "**Manager**")

## OBJECTIVES AND INVESTMENT POLICY

- The L&G Europe ex UK Equity UCITS ETF (the "**Fund**") is a passively managed exchange traded fund ("**ETF**") that aims to track the performance of the Solactive Core Developed Markets Europe ex UK Large & Mid Cap EUR Index NTR (the "**Index**"), subject to the deduction of the ongoing charges and other costs associated with operating the Fund.
- The Fund promotes a range of environmental and social characteristics which are met by tracking the Index. Further information on how such characteristics are met by the Fund can be found in the Fund Supplement.
- Dealing.** Shares in this share class (the "**Shares**") are denominated in EUR and can be bought and sold on stock exchanges by ordinary investors using an intermediary (e.g. a stockbroker). In normal circumstances, only Authorised Participants may buy and sell Shares directly with the Company. Authorised Participants may redeem their Shares on demand in accordance with the "Dealing Timetable" published on [www.lgim.com](http://www.lgim.com).
- Index.** The Index is designed to be a benchmark for developed market equities in Europe, excluding the United Kingdom, and measures the performance of large and mid-cap publically traded companies from various European developed market countries, excluding the United Kingdom, which satisfy minimum criteria relating to liquidity and size and excludes companies: (a) engaged in pure coal mining; (b) involved in the production of controversial weapons, such as cluster weapons, anti-personnel mines or biological and chemical weapons; or (c) that, for a continuous period of three years, have been classified as being in breach of at least one of the UN Global Compact principles, which is a set of globally accepted standards on human rights, labour, environment and corruption. The constituents are weighted according to their "free-float market capitalisation" which is a measure of the total market value of the proportion of a company's shares that are publically traded (i.e. "floating") in the stock market as opposed to locked-in shares held by promoters, company officers, controlling-interest investors, or government authorities. The Index is reconstituted on a quarterly basis on the first Wednesday in February, May, August and November.
- Replication.** The Fund will primarily invest directly in the securities represented in the Index in similar proportions to their weightings in the Index. The Fund may also invest in (1) companies that are not constituents of the Index that have similar risk and performance characteristics to the companies contained in the Index and (2) financial derivative instruments ("**FDIs**") (i.e. investments the prices of which are based on the companies contained in the Index and/or such other companies).
- Dividend Policy.** This share class does not intend to pay dividends. Any income which may result from the Fund's investments will be re-invested into the Fund.

## RISK AND REWARD PROFILE



- The Fund is rated 6 due to the nature of its investments and its risks. The rating is calculated based on historical data and may not be a reliable indication of the Fund's future risk profile. The risk category may shift over time. The lowest category on the above scale does not mean "risk free".

The risk and reward indicator may not take account of the following risks of investing in the Fund :

- The Fund may have underlying investments that are valued in currencies that are different from EUR, in which case exchange rate fluctuations will impact

the value of your investment. In addition, the return in the currency of this share class may be different to the return in your own currency.

- Third party service providers (such as counterparties entering into FDIs with the Fund or the Company's depositary) may go bankrupt and fail to pay money due to the Fund or return property belonging to the Fund.
- If the Index provider stops calculating the Index or if the Fund's license to track the Index is terminated, the Fund may have to be closed.
- It may not always be possible to buy and sell Shares on a stock exchange or at prices closely reflecting the NAV.
- There is no capital guarantee or protection on the value of the Fund. Investors can lose all the capital invested in the Fund.

Please refer to the "Risk Factors" section of the Company's Prospectus and the Fund Supplement.



## CHARGES FOR THE FUND

The charges you pay are used to pay the costs of running the Fund, including the costs of marketing and distributing it. These charges reduce the potential return from your investment.

### One-off charges taken before or after you invest

<b>Entry charge</b>	0.00%*
<b>Exit charge</b>	0.00%*

This is the maximum that might be taken out of your money before it is invested or before the proceeds of your investment are paid out.

### Charges taken from the Share Class over a year

<b>Ongoing charge</b>	0.10%
-----------------------	-------

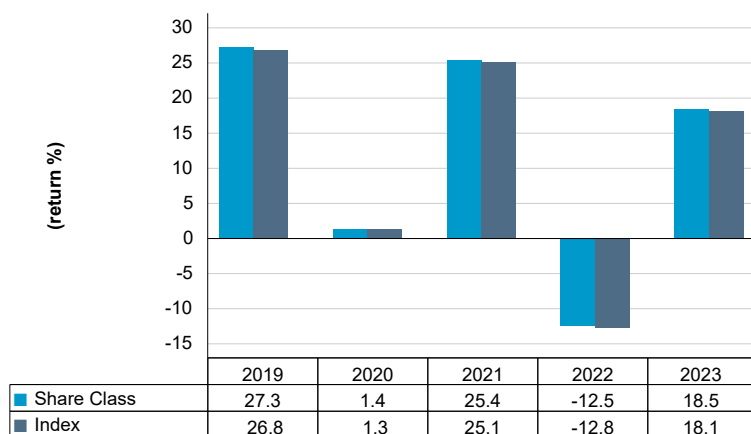
### Charges taken from the Share Class over a year

<b>Performance fee</b>	None
------------------------	------

\*Authorised Participants dealing directly with the Company will pay related transaction costs

- Ordinary investors (i.e. who buy and sell Shares on stock exchanges) are not charged entry or exit charges by the Company but may be charged dealing costs and fees by their stockbroker. Please consult your stockbroker and/or investment adviser for details of such fees.
- The ongoing charges figure is based on expenses for the 12 month period ended 31 December 2023 and may vary from year to year. The ongoing charges figure excludes portfolio transaction costs (except for the custody transaction costs paid to the Depositary which are included).
- For more information about charges, please see the "Fees and Expenses" section of the Company's Prospectus and the "Dealing Procedures" and "Dealing Information" sections of the Fund Supplement which are available at: [www.lgim.com](http://www.lgim.com).

## PAST PERFORMANCE



- The Fund has been in existence since 08 October 2018. This Share Class has been in existence since 08 October 2018.
- The chart shows the annual performance of the share class in EUR for each full calendar year over the period displayed in the chart.
- Ongoing charges have been included in the calculation of past performance. Any entry/exit charges have been excluded from the calculation.
- Past performance is not a guide to future performance.

## PRACTICAL INFORMATION

- The Fund's depositary is The Bank of New York Mellon SA/NV, Dublin Branch.
- The Fund is one of a number of sub-funds of the Company. The assets and liabilities of each sub-fund are segregated from each other by Irish law. Although the rights of investors and creditors are normally limited to the assets of each sub-fund, the Company is a single legal entity that may operate in jurisdictions which may not recognise such segregation.
- The Company is resident in Ireland for taxation purposes. This may have an impact on your personal tax position. Please consult your investment or tax adviser for advice on your own tax liabilities.
- The Manager may be held liable solely on the basis of any statement contained in this document that is misleading, inaccurate or inconsistent with the relevant parts of the Company's Prospectus.
- Further information about the Fund and the share class can be obtained from the Company's Prospectus and Fund Supplement and the annual and interim financial statements (that are prepared for the Company as a whole), which are available, in addition to the latest available NAV for the share class and details of the Fund's portfolio, at: [www.lgim.com](http://www.lgim.com). These documents are available free of charge in English and certain other languages.
- Switching of shares between this share class and other share classes of the Fund and/or other sub-funds of the Company is not permitted.
- An indicative intra-day net asset value ("iNAV") for the Share Class will be available at: <https://www.solactive.com/>
- Details of the Manager's up-to-date policy in respect of remuneration, including a description of how remuneration and benefits are calculated and the identities of the persons responsible for awarding same can be accessed from the following website: [www.lgim.com](http://www.lgim.com). A paper copy is also available free of charge from the Manager upon request.