

FTGF Brandywine Global Fixed Income Absolute Return Fund

Class X GBP DIS (M) H • ISIN IE00B7VSFK60

A subfund of: Franklin Templeton Global Funds plc (the "Company")

Managed by: Franklin Templeton International Services S.à r.l., part of the Franklin Templeton group of companies.

Objectives and Investment Policy

FTGF Brandywine Global Fixed Income Absolute Return Fund (the "Fund") investment objective is to seek to achieve a positive return in any market conditions (absolute return).

Investment Policy

The Fund mainly invests, directly or indirectly through derivatives, in corporate and government bonds denominated in any currency. These investments may be from anywhere in the world and some of them may be below investment grade.

These investments may include convertible securities and asset- and mortgage-backed securities.

Derivatives and techniques The Fund may extensively use derivatives for reducing risks (hedging) and costs, and to generate additional income or growth.

Strategy The investment manager uses macroeconomic and interest rate analysis to identify securities that appear to offer the best return for their risk level. The investment manager may take both long and short positions on individual securities, buying those it appears will increase in price and taking short positions on those it appears will decline in price.

SFDR category Article 6 (does not promote environmental and/or social characteristics or have a sustainable investment objective under EU regulations).

Base currency US dollar (USD).

Benchmark(s) FTSE 3-month US Treasury Bill Index. Used for performance comparison. The benchmark plus 2% per annum is also used as a performance target (gross of fees) over a complete economic cycle.

The Fund is actively managed and may deviate materially from that of the benchmark(s).

Buying and selling shares

You may normally buy or sell shares on any day the New York Stock Exchange is open for business.

Intended retail investor

Investors who understand the risks of the Fund and plan to invest for at least 5 years. The Fund may appeal to investors who:

- are looking for a return that is less correlated to market cycles
- are interested in exposure to global bond markets as part of a diversified portfolio
- have a medium to high risk profile and can tolerate significant short-term changes in the share price

Product availability The Fund is available to all investors with at least basic investment knowledge, through a wide range of distribution channels, with or without the need for advice.

Terms to Understand

asset- and mortgage- backed securities: Bonds backed by consumer debt (such as mortgages, credit card and other loan-type debt) and whose income derives from the payments received from the underlying borrowers.

bonds, below investment grade: Bonds represent an obligation to repay a debt, along with interest. Below investment grade bonds generally pay higher interest rates but are considered less likely to make all scheduled payments or repay the initial debt.

convertible securities: Bonds that offer the option or the obligation of receiving repayment of principal either in cash or shares in the company.

derivatives: Financial instruments whose value is linked to one or more rates, indexes, share prices or other values.

Share Class Currency: GBP

Treatment of Income: For this share class all, or some portion of, net income is declared and paid monthly to shareholders.

Risk and Reward Profile



What does this indicator mean and what are its limits?

The indicator is based on the volatility of the returns (past performance) of the reported share class (calculated on a 5 year rolling return basis). Where a share class is inactive / has less than 5 years of returns, the returns of a representative benchmark are used.

There is no guarantee that the fund will remain in the indicator category shown above and the categorisation of the fund may shift over time. Historical data, which is used in calculating the indicator, may not be a reliable indicator of the future risk profile of this fund.

The lowest category does not mean a risk-free investment.

The fund does not offer any capital guarantee or protection and you may not get back the amount invested.

The Fund invests mainly in a diversified portfolio of bonds from various countries and sectors, along with the extensive use of derivatives. As a result, the performance of the Fund can fluctuate over time.

The fund is subject to the following risks which are materially relevant but may not be adequately captured by the indicator:

Bonds: There is a risk that issuers of bonds held by the fund may not be able to repay the investment or pay the interest due on it, leading to losses for the fund. Bond values are affected by the market's view of the above risk, and by changes in interest rates and inflation.

Derivatives: The use of derivatives can result in greater fluctuations of the fund's value and may cause the fund to lose as much as or more than the amount invested.

Fund counterparties: The fund may suffer losses if the parties that it trades with cannot meet their financial obligations.

Fund currency: Changes in exchange rates between the currencies of investments held by the fund and the fund's base currency may negatively affect the value of an investment and any income received from it.

Fund operations: The fund is subject to the risk of loss resulting from inadequate or failed internal processes, people or systems or those of third parties such as those responsible for the custody of its assets, especially to the extent that it invests in developing countries.

Interest rates: Changes in interest rates may negatively affect the value of the fund. Typically as interest rates rise, bond values fall.

Liquidity: In certain circumstances it may be difficult to sell the fund's investments because there may not be enough demand for them in the markets, in which case the fund may not be able to minimise a loss on such investments.

Low rated bonds: The fund may invest in lower rated or unrated bonds of similar quality, which carry a higher degree of risk than higher rated bonds.

Hedged class currency: The value of your investment may fall due to changes in the exchange rate between the currency of your share class and the base currency of the fund. Efforts will be made to try to protect the value of your investment against such changes, but such efforts may not succeed.

For further explanation on the risks associated with an investment in the fund, please refer to the section entitled "Risk Factors" in the base prospectus and "Primary Risks" in the fund supplement.

Charges

The charges you pay are used to pay the costs of running the fund, including the costs of marketing and distributing it. These charges reduce the potential growth of your investment.

One-off charges taken before or after you invest

Entry charge	none
Exit charge	none

This is the maximum that might be taken out of your money before it is invested (entry charge) and before the proceeds of your investment are paid out (exit charge).

Charges taken from the Fund over a year

Ongoing charge	1.27%
----------------	-------

Charges taken from the Fund under certain specific conditions

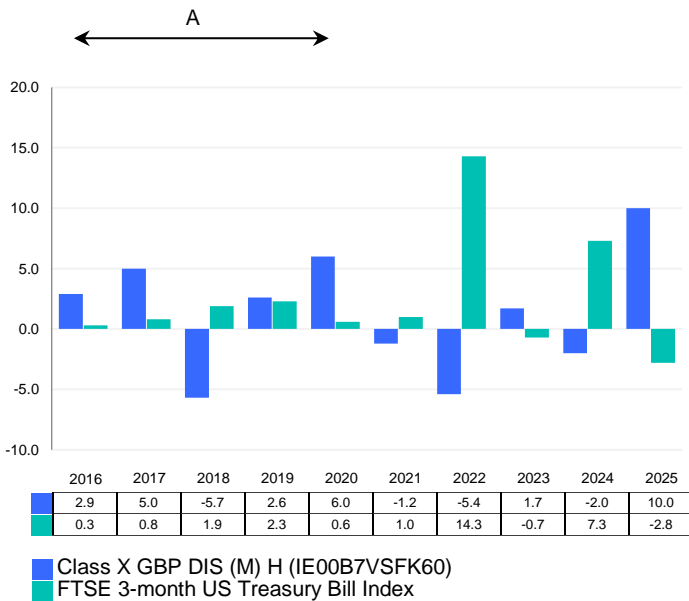
Performance fee	none
-----------------	------

Entry and exit charges shown are the maximum that might be taken out of your money. In some cases, you might pay less and you should speak to your financial adviser about this.

The ongoing charge is based on expenses for the 12 month period ending December 2025. This figure may vary over time.

For more information about charges, please see the "Fees and Expenses" sections of the base prospectus and fund supplement.

Past Performance



A: From 31 March 2019, FTSE 3-month US Treasury Bill Index is used to compare the fund's performance, prior to this date the fund used the BBA 3 month LIBOR.

- Past performance is no guide to future returns and may not be repeated.
- The performance reflects all fees and charges payable by the fund but does not reflect any entry or exit charge that might be payable. For performance purposes only, any distributed income has been reinvested.
- The Fund was launched on 03/04/2012 and the share class began issuing shares on 21/01/2014.
- Past performance has been calculated in GBP.
- Further information on the fund's performance is available at <https://www.franklinresources.com/all-sites>.

Practical Information

- **Depository:** The Bank of New York Mellon SA/NV, Dublin Branch.
- **Further Information:** Additional information about the fund (including the prospectus, supplement, reports and accounts and the remuneration policy) may be obtained in English. The prospectus, supplement, and the reports and accounts are also available in French, German, Italian and Spanish. The documents are available free of charge upon request to the Administrator: BNY Mellon Fund Services (Ireland) Designated Activity Company, Shipping Office, 20-26 Sir John Rogerson's Quay, Grand Canal Dock, Dublin, Ireland, D02 Y049 and at <https://www.franklinresources.com/all-sites>.
- **Price Publication:** The latest share price is published at <https://www.franklinresources.com/all-sites>.
- **Tax Legislation:** The fund is subject to the tax law and regulation of Ireland. Depending on your own country of residence, this might have an impact on your investment. For further details, please speak to your financial adviser.
- **Liability Statement:** Franklin Templeton International Services S.à r.l. may be held liable solely on the basis of any statement contained in this

document that is misleading, inaccurate or inconsistent with the relevant parts of the prospectus for the fund.

- **Structure:** Franklin Templeton Global Funds plc has a number of different sub-funds. The assets and liabilities of each sub-fund are segregated by law from the assets and liabilities of each other sub-fund. The prospectus and the periodic reports are prepared for Franklin Templeton Global Funds plc as a whole.
- **Switching Between Funds:** You may apply for shares in this fund to be exchanged for another class within the same fund or to another class in other funds of Franklin Templeton Global Funds plc, subject to certain conditions (see "Exchanges of Shares" in the prospectus). The fund itself does not charge a switching fee for the exchange of shares of one fund for the same class of shares of another fund or for shares of a different share class of the same fund. Certain dealers, however, may charge a switching fee – please ask your dealer.