

# Key Investor Information

This document provides you with key investor information about this fund. It is not marketing material. The information is required by law to help you understand the nature and the risks of investing in this fund. You are advised to read it so you can make an informed decision about whether to invest.



## Asset Backed Opportunities Fund ("the Fund") I Gross Income Shares

This is a sub fund of MI TwentyFour Investment Funds. The Fund is an Open Ended Investment Company. ISIN: GB00BD5D3D88. Apex Fundrock Ltd is the Authorised Corporate Director of the Fund ("MI" and "MI Funds" are trading names of the ACD).

### Objectives and investment policy

The Fund aims to provide an attractive level of income along with an opportunity for capital growth.

The Fund aims to target a net total return of SONIA\* + 4% - 6% per year. However, there is no guarantee that the Fund will achieve a positive return over 12 months or any time period; your capital may be at risk and you may not get back the full amount originally invested. (\*SONIA is the Bank of England Sterling Overnight Index Average interest rate benchmark based on actual transactions and reflects the average of the interest rates that banks pay to borrow sterling overnight from other financial institutions and other institutional investors.)

The Fund will invest in a range of European asset backed securities. These are types of bonds which are loans that pay a fixed or variable rate of interest. These particular bonds are linked to assets which provide some security on the investment. Examples of these are securities which are backed by mortgages on residential and commercial property, loans on automobiles and loans to small or medium sized businesses. The Fund will choose bonds based on their risk and the attractiveness of their income. The potential for capital growth may also be a material factor in their selection. The performance of the Fund is measured against the SONIA rate.

On occasions the Fund may be significantly invested in one particular geographical region of Europe.

The Fund will aim to reduce the risk of exchange rate movements lowering its value through the use of derivative instruments (such as futures, options and swaps). Derivatives are linked to the rise and fall of other assets, such as currencies. The price movements in these assets can result in movements of the Fund's share price.

The Fund can also use derivative instruments for the purposes of efficient portfolio management, with the aim of managing risk and cost.

The investment process of the Fund integrates the consideration of environmental and social factors and is described in more detail in the prospectus.

Any income this share class generates will be paid out to you.

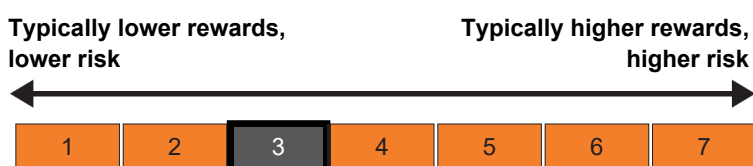
You can buy and sell shares on any business day in London.

Recommendation: this Fund may not be appropriate for investors who plan to withdraw their money within 4-5 years.

For full investment objectives and policy details please refer to the prospectus.

### Risk and reward profile

The Risk and Reward Indicator table demonstrates where the Fund ranks in terms of its potential risk and reward. The higher the rank the greater the potential reward but the greater the risk of losing money. It is based on past data, may change over time and may not be a reliable indication of the future risk profile of the Fund. The shaded area in the table below shows the Fund's ranking on the Risk and Reward Indicator.



- This Fund is ranked at 3 because funds of this type have experienced low to medium rises and falls in value in the past. Please note that even the lowest risk class can lose you money and that extreme market circumstances can mean you suffer severe losses in all cases. The indicator does not take into account the following risks of investing in this Fund:
- Investing overseas can bring additional returns and spread risk to different markets. There are risks, however, that changes in currency exchange rates may cause the value of your investment to decrease and increase.
- There is no guarantee that an asset which provides the security for a bond will maintain its value.
- Derivatives can be used to help reduce risk but may not be fully successful. Derivatives can also reduce gains you may otherwise have made.
- Currency risk reduction techniques can have an effect on the value of your investment and on the performance of the share class.
- Bond values are affected by changes in interest rates, inflation and any decline in creditworthiness of the bond issuer. Bonds that produce a higher level of income usually also carry greater risk as such bond issuers may not be able to pay the bond income as promised or could fail to repay the capital amount used to purchase the bond.
- There may be cases where the organisation from which we buy a bond fails to carry out its obligations, which could cause losses to the Fund.
- The Fund will choose bonds based on their risk and attractiveness of their income. This could include lower rated bonds that are higher risk but typically pay a higher income. The potential for capital growth may also be a material factor in their selection.
- The Fund invests in assets that are not always readily saleable without suffering a discount to fair value. The portfolio may have to lower the selling price, sell other investments or forego another, more appealing investment opportunity.
- In difficult market conditions, the Fund may not be able to sell an investment for its full value or at all. This could affect performance and, in extreme conditions, could cause the Fund to defer or suspend requests from investors to sell shares.
- For further risk information please see the prospectus.

## Charges

The charges you pay are used to pay the costs of running the Fund, including the costs of marketing and distributing it. These charges reduce the potential growth of your investment.

### One-off charges taken before or after you invest

Entry charge	5.00%
Exit charge	0.00%

These are the maximum charges that we might take out of your money before it is invested and before we pay out the sale proceeds of your investment. In some cases, you might pay less and you should speak to your financial adviser about this.

### Charges taken from the Fund over a year

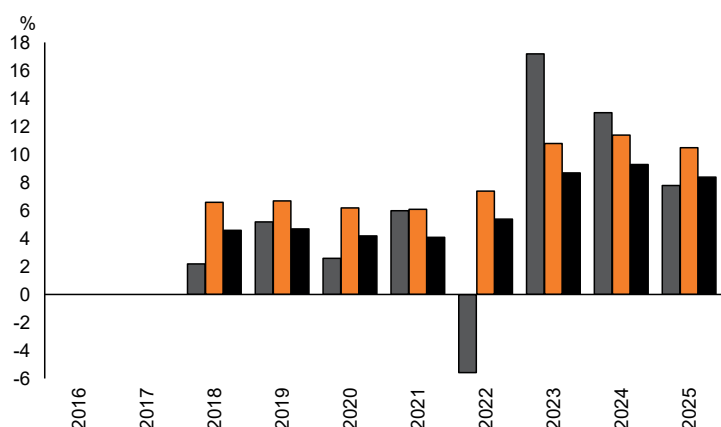
Ongoing charges	0.70%
-----------------	-------

### Charges taken from the Fund under specific conditions

Performance fee	NONE
-----------------	------

- Switching charge (for switching into the Fund from another fund) 0.05%.
- The ongoing charges figure is based on the last year's expenses and may vary from year to year. It excludes the costs of buying or selling assets for the Fund (unless these assets are shares of another fund).
- For the ongoing charge, the figure is as at 30 September 2025.
- Certain charges are deducted from the capital of the Fund. This may allow more income to be paid but it may also restrict capital growth.
- For more information about charges, please see the prospectus.

## Past performance



	2016	2017	2018	2019	2020	2021	2022	2023	2024	2025
Fund	2.2	5.2	2.6	6.0	-5.6	17.2	13.0	7.8		
Benchmark 1 *	6.6	6.7	6.2	6.1	7.4	10.8	11.4	10.5		
Benchmark 2 *	4.6	4.7	4.2	4.1	5.4	8.7	9.3	8.4		

Source: FE fundinfo 2026

- You should be aware that past performance is not a guide to future performance.
- Fund launch date: 11/04/2017.
- Share/unit class launch date: 11/04/2017.
- Performance is calculated in GBP.
- \* Benchmark 1 - Bank Of England Sterling Overnight Index Average + 6%
- \* Benchmark 2 - Bank Of England Sterling Overnight Index Average + 4%

## Practical information

- This document is issued by Apex Fundrock Ltd and contains information on the I Gross Income Shares only ("MI" and "MI Funds" are trading names of the ACD).
- Each fund of the Company has its own pool of assets and liabilities, segregated by law. If one fund were unable to pay for its liabilities the assets of the other funds could not be used to pay for those liabilities.
- You can get further detailed information regarding the Fund, including details of the investment manager and how to switch, buy and sell shares and other share classes available, within the prospectus, the supplementary information document and the annual and half yearly managers' reports. You can get these free of charge from Apex Fundrock Ltd, Hamilton Centre, Rodney Way, Chelmsford, Essex CM1 3BY or from our website: [www.fundrock.com](http://www.fundrock.com). These are available in English only. You can also call us on 0345 026 4286, or look on our website for the latest share prices.
- Details of the ACD's remuneration policy (including a description of how remuneration and benefits are calculated, the composition of the remuneration committee and the identities of persons responsible for awarding remuneration and benefits) are available at [www.fundrock.com/mi-fund-data](http://www.fundrock.com/mi-fund-data) or by requesting a paper copy free of charge (see above for contact details).
- The Depositary of the Fund is Northern Trust Investor Services Limited.
- Please note that the tax laws of the United Kingdom may impact your own tax position.
- Apex Fundrock Ltd may be held liable solely on the basis of any statement contained in this document that is misleading, inaccurate or inconsistent with the relevant parts of the prospectus for the Fund.