

ASI Emerging Markets Equity Fund

Class I Acc GBP

28 February 2021

Objective

To generate growth over the long term (5 years or more) by investing in emerging markets equities (company shares).

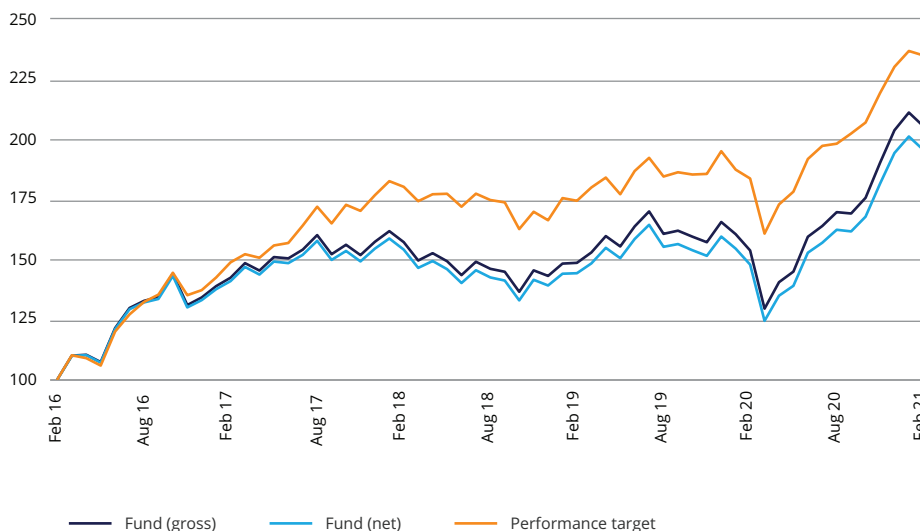
Performance Target: To achieve the return of the MSCI Emerging Markets Index, plus 3% per annum over three years (before charges). The Performance Target is the level of performance that the management team hopes to achieve for the fund. There is however no certainty or promise that they will achieve the Performance Target.

The ACD believes this is an appropriate target for the fund based on the investment policy of the fund and the constituents of the index.

Portfolio securities

- The fund invests at least 70% in equities and equity related securities of companies listed, incorporated or domiciled in global emerging market countries, or companies that derive a significant proportion of their revenues or profits or have a significant proportion of their assets there.
- Emerging Markets include Asian, Eastern European, Middle Eastern, African and Latin American countries or any country included within the MSCI Emerging Markets Index.
- The fund may also invest in other funds (including those managed by Aberdeen Standard Investments), money-market instruments, and cash.

Performance



Cumulative and annualised performance

	1 month	6 months	Year to date	1 year	3 years (p.a.)	5 years (p.a.)
Fund (gross) (%)	-2.69	21.11	0.84	33.68	9.34	15.48
Fund (net) (%)	-2.77	20.52	0.68	32.35	8.28	14.35
Performance target (%)	-0.78	18.56	2.07	27.92	9.24	18.63

Discrete annual returns - year to 28/2

	2021	2020	2019	2018	2017
Fund (gross) (%)	33.68	3.47	-5.48	10.39	42.33
Fund (net) (%)	32.35	2.47	-6.39	9.30	40.92
Performance target (%)	27.92	5.31	-3.22	21.14	48.73

Performance Data: Share Class I Acc.

Benchmark history: Performance comparator/Portfolio constraining benchmark – MSCI Emerging Markets

Source: Lipper. Basis: Total Return, NAV to NAV, UK Net/Gross Income Reinvested.

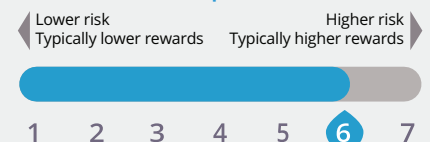
"Fund (Net)" refers to the actual unit price performance of the shareclass shown; "Fund(Gross)" adds back charges such as the annual management charge to present performance on the same basis as the performance target / performance comparator / portfolio constraining benchmark. These figures do not include the initial charge; if this is paid it will reduce performance from that shown.

Past performance is not a guide to future returns and future returns are not guaranteed.

Key facts

Fund manager(s)	Global Emerging Markets Equity Team
Fund launch date	16 March 1987
Share class launch date	25 July 2003
Authorised corporate director (ACD)	Aberdeen Standard Fund Managers Limited
Fund size	£1.2bn
Number of holdings	61
Performance target	MSCI Emerging Markets +3.00%
Performance comparator/Portfolio constraining benchmark	MSCI Emerging Markets
Fund historic yield ¹	0.48%
Entry charge (up to) ²	2.00%
Annual management charge	1.00%
Ongoing charge figure ³	1.19%
Minimum initial investment	£1,000,000
Fund type	OEIC
Valuation point	12:00 (UK time)
Base currency	GBP
Sedol	3322756
ISIN	GB0033227561
Bloomberg	ABEMMCA LN
Citicode	ZY91
Reuters	LP60087505
Domicile	United Kingdom

Risk and reward profile



This indicator reflects the volatility of the fund's share price over the last five years. See Key Investor Information Document (KIID) for details.

Key risks

- The value of investments and the income from them can fall and investors may get back less than the amount invested.
- The fund invests in equity and equity related securities. These are sensitive to variations in the stock markets which can be volatile and change substantially in short periods of time.
- The fund invests in emerging market equities and / or bonds. Investing in emerging markets involves a greater risk of loss than investing in more developed markets due to, among other factors, greater political, tax, economic, foreign exchange, liquidity and regulatory risks.

Management process

- The management team use their discretion (active management) to maintain a diverse asset mix at country, sector and stock level.
- Their primary focus is on stock selection using research techniques to select individual holdings. The research process is focused on finding high quality companies at attractive valuations that can be held for the long term.
- In seeking to achieve the performance target, the MSCI Emerging Markets Index is used as a reference point for portfolio construction and as a basis for setting risk constraints. The expected variation (tracking error) between the returns of the fund and the index is not ordinarily expected to exceed 9%. Due to the active nature of the management process, the Funds performance profile may deviate significantly from that of the Index over the long term.

Top ten holdings (%)

Taiwan Semiconductor Manufacturing Co Ltd	9.9
Samsung Electronics Co Ltd	8.9
Tencent Holdings Ltd	7.1
Alibaba Group Holding Ltd	3.8
Housing Development Finance Corp Ltd	2.8
LONGi Green Energy Technology Co Ltd	2.6
LG Chem Ltd	2.3
Meituan	2.3
Naspers Ltd	2.3
Vale SA	2.3
Assets in top ten holdings	44.3

Country (%)

China	36.2
South Korea	12.7
India	10.6
Taiwan	9.9
Hong Kong	6.0
Brazil	5.7
Russia	4.3
Netherlands	3.3
Mexico	3.3
Cash and Other	8.0

Source : Aberdeen Standard Investments 28/02/2021

Figures may not always sum to 100 due to rounding.

Sector (%)

Information Technology	26.3
Consumer Discretionary	19.2
Financials	18.7
Communication Services	9.0
Materials	7.8
Consumer Staples	5.4
Industrials	5.1
Cash and Other	8.5

- (d) The fund may invest in companies with Variable Interest Entity (VIE) structures in order to gain exposure to industries with foreign ownership restrictions. There is a risk that investments in these structures may be adversely affected by changes in the legal and regulatory framework.
- (e) Investing in China A shares involves special considerations and risks, including greater price volatility, a less developed regulatory and legal framework, exchange rate risk/controls, settlement, tax, quota, liquidity and regulatory risks.
- (f) The use of derivatives carries the risk of reduced liquidity, substantial loss and increased volatility in adverse market conditions, such as a failure amongst market participants. The use of derivatives may result in the fund being leveraged (where market exposure and thus the potential for loss by the fund exceeds the amount it has invested) and in these market conditions the effect of leverage will be to magnify losses.

Risk stats

Beta [^]	1.12
Fund Volatility [^]	16.54
Index Volatility [^]	14.40
Information Ratio [^]	0.87
R-Squared [^]	0.94
Sharpe Ratio [^]	0.56
Tracking Error [^]	4.31

Source : Aberdeen Standard Investments. [^] Three year annualised.

Ratings

Morningstar ★★★

Derivative usage

- The fund may use derivatives to reduce risk, reduce cost and/or generate additional income or growth consistent with the risk profile of the fund (Efficient Portfolio Management).
- Derivative usage in the fund is expected to be very limited. Where derivatives are used, this would mainly be in response to significant inflows into the fund so that in these instances, cash can be invested while maintaining the Funds existing allocations to company shares.

To help you understand this fund and for a full explanation of risks and the overall risk profile of this fund and the shareclasses within it, please refer to the Key Investor Information Documents and Prospectus which are available on our website www.aberdeenstandard.com The Prospectus also contains a glossary of key terms used in this document.

¹The Historic Yield as at 31/01/2021 reflects distributions declared over the past twelve months as a percentage of the mid-market share price, as at the date shown. It does not include any preliminary charge and investors may be subject to tax on their distributions.

²These are the maximum charges that we might take out of your money before it is invested. In some cases, the charges may be less and you should speak to your financial advisor about this.

³The Ongoing Charge Figure (OCF), is the overall cost shown as a percentage of the value of the assets of the fund. It is made up of the Annual Management Charge (AMC) of 1.00% and other charges. It does not include any initial charges or the cost of buying and selling stocks for the fund. The Ongoing Charges figure can help you compare the annual operating expenses of different funds.

The fund is a sub-fund of Aberdeen Standard OEIC I, an authorised open-ended investment company (OEIC).

The information contained in this document should not be considered as an offer, solicitation or investment recommendation to deal in the shares of any securities or financial instruments. It is not intended for distribution or use by any person or entity who is a citizen or resident of or located in any jurisdiction where such distribution, publication or use would be prohibited.

Nothing herein constitutes investment, legal, tax or other advice and is not to be relied upon in making an investment or other decision. No recommendation is made, positive or otherwise, regarding individual securities mentioned. This is not an invitation to subscribe for shares in the fund and is by way of information only.

Subscriptions will only be received and shares issued on the basis of the current Prospectus, relevant Key Investor Information Document (KIID) and Supplementary Information Document (SID) for the fund. These can be obtained free of charge from Aberdeen Standard Fund Managers Limited, PO Box 9029, Chelmsford, CM99 2WJ or available on www.aberdeenstandard.com.

Any data contained herein which is attributed to a third party ("Third Party Data") is the property of (a) third party supplier(s) (the "Owner") and is licensed for use by Standard Life Aberdeen*. Third Party Data may not be copied or distributed. Third Party Data is provided "as is" and is not warranted to be accurate, complete or timely. To the extent permitted by applicable law, none of the Owner, Standard Life Aberdeen* or any other third party (including any third party involved in providing and/or compiling Third Party Data) shall have any liability for Third Party Data or for any use made of Third Party Data. Neither the Owner nor any other third party sponsors, endorses or promotes the fund or product to which Third Party Data relates.

* Standard Life Aberdeen means the relevant member of Standard Life Aberdeen group, being Standard Life Aberdeen plc together with its subsidiaries, subsidiary undertakings and associated companies (whether direct or indirect) from time to time.

The MSCI information may only be used for your internal use, may not be reproduced or disseminated in any form and may not be used as a basis for or a component of any financial instruments or products or indices. None of the MSCI information is intended to constitute investment advice or a recommendation to make (or refrain from making) any kind of investment decision and may not be relied on as such. Historical data and analysis, should not be taken as an indication or guarantee of any future performance analysis forecast or prediction. The MSCI information is provided on an "as is" basis and the user of this information assumes the entire risk of any use made of this information. MSCI, each of its affiliates and each other person involved in or related to compiling, computing or creating any MSCI information (collectively, the "MSCI" Parties) expressly disclaims all warranties (including without limitation, any warranties of originality, accuracy, completeness, timeliness, non-infringement, merchantability and fitness for a particular purpose) with respect to this information. Without limiting any of the foregoing, in no event shall any MSCI Party have any liability for any direct, indirect, special, incidental, punitive, consequential (including, without limitation, lost profits) or any other damages (www.msci.com).

Morningstar is an independent agency that evaluates the fund based on a qualitative and quantitative analysis and, where appropriate, assigns a five-tier scale with three positive ratings of Gold, Silver, and Bronze, a Neutral rating, and a Negative rating and gold being the best. Refer to Website www.morningstar.com for more information or Contact Financial Services Aberdeen Asset Management.

©2021 Morningstar. All Rights Reserved. The information contained herein: (1) is proprietary to Morningstar and/or its content providers; (2) may not be copied or distributed; and (3) is not warranted to be accurate, complete or timely. Neither Morningstar nor its content providers are responsible for any damages or losses arising from any use of this information. Past performance is no guarantee of future results. For more detailed information about Morningstar Analyst Rating, including its methodology, please go to: <http://corporate.morningstar.com/us/documents/MethodologyDocuments/AnalystRatingforFundsMethodology.pdf>

The Morningstar Analyst Rating for Funds is a forward-looking analysis of a fund. Morningstar has identified five key areas crucial to predicting the future success of a fund: People, Parent, Process, Performance, and Price. The pillars are used in determining the Morningstar Analyst Rating for a fund. Morningstar Analyst Ratings are assigned on a five-tier scale running from Gold to Negative. The top three ratings, Gold, Silver, and Bronze, all indicate that our analysts think highly of a fund; the difference between them corresponds to differences in the level of analyst conviction in a fund's ability to outperform its benchmark and peers through time, within the context of the level of risk taken over the long term. Neutral represents funds in which our analysts don't have a strong positive or negative conviction over the long term and Negative represents funds that possess at least one flaw that our analysts believe is likely to significantly hamper future performance over the long term. Long term is defined as a full market cycle or at least five years. Past performance of a security may or may not be sustained in future and is no indication of future performance. For detailed information about the Morningstar Analyst Rating for Funds, please visit <http://global.morningstar.com/managerdisclosures>

United Kingdom (UK): Issued by Aberdeen Standard Fund Managers Limited, registered in England and Wales (740118) at Bow Bells House, 1 Bread Street, London, EC4M 9HH. Authorised and regulated by the Financial Conduct Authority in the UK.