

## Strategy

The portfolio manager adopts a fundamental, bottom-up investment approach and typically runs an unconstrained and concentrated portfolio of companies selected to provide dividend income and capital returns. The manager actively looks for high quality, cash generative businesses with robust balance sheets and has a strong focus on delivering dividend focused total return with an emphasis on capital preservation, dividend management and capital allocation policy. He typically invests in mid to large market capitalisation companies and also looks for opportunities in small cap with reasonable liquidity. Risk management is embedded in the stock selection process and the manager constantly focuses on mitigating the risk of permanent capital loss and negative shocks to cash flow. ESG considerations are integrated in the investment process

## Objectives & Investment Policy

**Objective:** The fund aims to pay you an income and increase the value of your investment over a period of 5 years or more.

**Investment Policy:** The fund will invest at least 70% in companies in the Asia Pacific region (excluding Japan). This region includes countries considered to be emerging markets as determined by the Investment Manager at its sole discretion. The companies will be either listed, incorporated, domiciled, or have significant business activities in the region. The remainder will be invested in companies outside of the region detailed above and in other investment types such as cash and derivatives. The Investment Manager will choose investments which it believes offer attractive income in addition to increasing their share price.

Emerging markets are countries progressing toward becoming advanced, usually shown by some development in financial markets, the existence of some form of stock exchange and a regulatory body. The fund aims to hold a concentrated portfolio, investing in 30-50 companies or other types of investment.

**Investment Process:** The fund is managed without reference to a benchmark and has full discretion in its choices of investments within its objectives and policies.

**Derivatives and Techniques:** Derivatives are investments whose value is linked to another investment, or to the performance of a stock exchange or to some other variable factor, such as interest rates and used to reduce risk or transaction costs and/or to generate extra income or further increase the value of your investment.

**Additional information:** Income from the fund is either paid out to you or it is used to buy you more shares in the fund. As the fund aims to generate an income, some charges will be taken from the fund rather than the income generated by the fund. This means the amount payable as income may be increased and the potential to increase the value of your investment may be reduced. Shares can usually be bought and sold each business day of the fund. The fund's performance can be compared to the MSCI Asia Pacific ex-Japan High Dividend Yield (Net total return) Index.

**Additional information:** Income from the fund is either paid out to you or it is used to buy you more shares in the fund. As the fund aims to generate an income, some charges will be taken from the fund rather than the income generated by the fund. This means the amount payable as income may be increased and the potential to increase the value of your investment may be reduced. Shares can usually be bought and sold each business day of the fund.

## Fund Facts

**Launch date:** 19.08.13

**Portfolio manager:** Jochen Breuer

**Appointed to fund:** 01.10.16

**Years at Fidelity:** 17

**Fund size:** £ 77m

**Number of positions in fund\*:** 42

**Fund reference currency:** UK Sterling (GBP)

**Fund domicile:** United Kingdom

**Fund legal structure:** OEIC

**Management company:** FIL Investment Services (UK) Limited

**Capital guarantee:** No

**Portfolio Turnover Cost (PTC):** 0.10%

**Portfolio Turnover Rate (PTR):** 75.63%

\*A definition of positions can be found on page 3 of this factsheet in the section titled "How data is calculated and presented."

## Share Class Facts

Other share classes may be available. Please refer to the prospectus for more details.

**Launch date:** 19.08.13

**NAV price in share class currency:** 1.628

**ISIN:** GB00B8W5M023

**SEDOL:** B8W5M02

**Bloomberg:** FIDADWI LN

**Dealing cut-off:** 12:00 UK time

**Distribution type:** Income

**Distribution frequency:** Quarterly

**Historic yield:** 4.13%

**Charges made to income or capital:** Capital

**Ongoing Charges Figure (OCF) per year:** 0.89% (28.02.23)

**OCF takes into account annual management charge per year:** 0.75%

## Independent Assessment

Information is the latest available at date of publication. See Glossary for further details. As some ratings agencies may use past performance to produce their assessments, these are not a reliable indicator of future results.

**Morningstar Rating:** \*\*\*\*

The rating measures how well a fund has balanced risk and reward relative to its peers. Star ratings are strictly based on past performance and Morningstar suggests investors use them to identify funds that are worthy for further research. The top 10% of funds in a category will receive a 5-star rating and the next 22.5% receive a 4-star rating. Only ratings of 4 or 5 stars are displayed on the factsheet.

## Share Class Risk and Reward Profile



This risk indicator is taken from the key information document at the relevant month-end. Because it may be updated during a month, please refer to the key information document for the most up-to-date information.

- Historical data may not be a reliable indication for the future.
- The risk category shown is not guaranteed and may change over time.
- The lowest category does not mean a "risk free" investment.
- The risk and reward profile is classified by the level of historical fluctuation of the Net Asset Values of the share class, and within this classification, categories 1-2 indicate a low level of historical fluctuations, 3-5 a medium level and 6-7 a high level.
- The value of your investment may fall as well as rise and you may get back less than you originally invested.
- The fund may invest in instruments denominated in currencies other than the fund base currency. Changes in currency exchange rates can therefore affect the value of your investment.

## Important Information

The value of your investment may fall as well as rise and you may get back less than you originally invested. The use of financial derivative instruments may result in increased gains or losses within the fund. This fund invests in emerging markets which can be more volatile than other more developed markets. Liquidity is a measure of how easily an investment can be converted into cash. Under certain market conditions assets may be more difficult to value or sell at a desired price. This could affect the fund's ability to meet redemptions in a timely manner. When referring to sustainability - related aspects of the promoted fund, the decision to invest should take into account all characteristics or objectives of the promoted fund as detailed in the Prospectus. Information on sustainability-related aspects is provided pursuant to SFDR at <https://www.fidelity.lu/sfdr-entity-disclosures>.

Past performance does not predict future returns. The fund's returns may increase or decrease as a result of currency fluctuations. The investment which is promoted concerns the acquisition of units or shares in a fund, and not in a given underlying asset owned by the fund.

## Performance Comparator(s)

### Peer Group Universe

Morningstar IA Asia Pacific Ex Japan

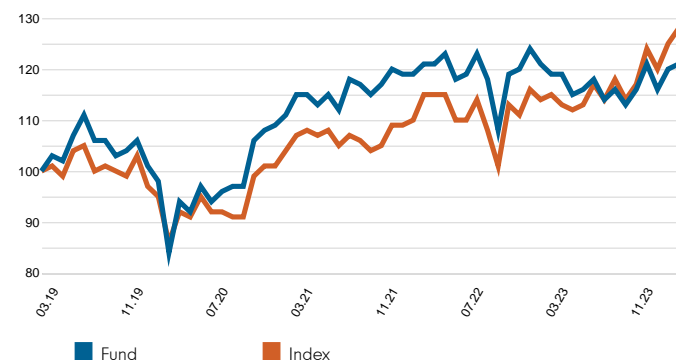
### Market index from 02.09.19

MSCI AC Asia Pacific ex Japan High Dividend Yield Index (Net)

Market index is for comparative purposes only unless specifically referenced in the Objectives & Investment Policy on page 1. The same index is used in the positioning tables on this factsheet.

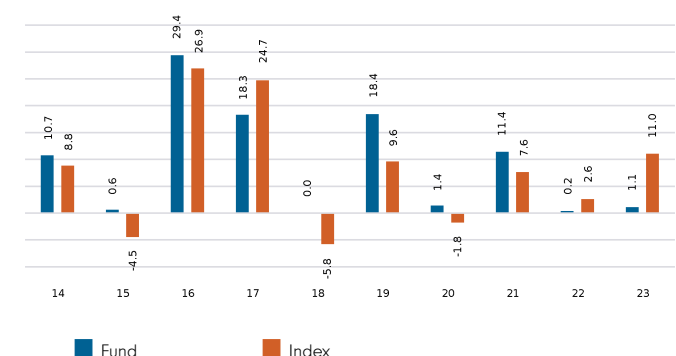
Where the effective date for the current market index is after the share class launch date, full history is available from Fidelity.

## Cumulative performance in GBP (rebased to 100)



Performance is shown for the last five years (or since launch for funds launched within that period).

## Performance for calendar years in GBP (%)



## Performance to 31.03.24 in GBP (%)

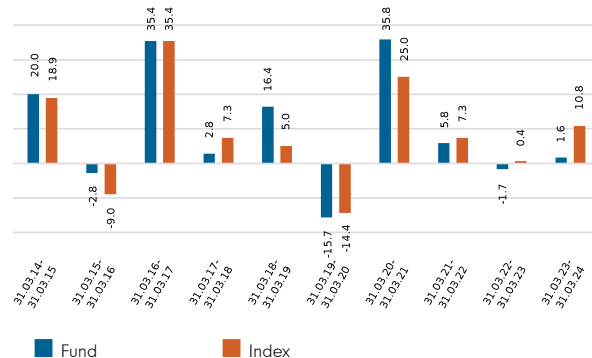
	1m	3m	YTD	1yr	3yr	5yr	Since 19.08.13*
Fund cumulative growth	0.9	-0.2	-0.2	1.6	5.7	21.1	134.1
Index cumulative growth	2.2	3.3	3.3	10.8	19.4	27.7	112.8
Fund annualised growth	-	-	-	1.6	1.9	3.9	8.3
Index annualised growth	-	-	-	10.8	6.1	5.0	7.4
Ranking within Peer Group Universe							
W Income Shares	96	97	97	42	20	43	
Total number of funds	107	107	107	106	99	92	
Quartile ranking**	4	4	4	2	1	2	

Source of fund performance and volatility and risk measures is Fidelity. Performance is excluding initial charge. Basis: bid-bid with income reinvested, in GBP, net of fees. Market indices are sourced from RIMES and other data is sourced from third-party providers such as Morningstar.

\*Performance commencement date.

\*\*Quartile rank is for the fund's primary share class as identified by Morningstar, which may be different than the share class detailed in this factsheet and refers to performance over time rated on a scale of 1-4. A ranking of 1 indicates that the item being ranked is in the top 25% of the sample and so on. Rankings are based on a performance record that is included in the Peer Group Universe. In line with Investment Association methodology, this record may include a track record extension from a legacy share class and the record may not be the same class of this factsheet. Quartile ranking is an internal Fidelity International calculation. Ranking may vary by share class.

## Performance for 12 month periods in GBP (%)



## Volatility & Risk (3 years)

Annualised Volatility: fund (%)	11.51	Annualised Alpha	-3.05
Relative Volatility	0.92	Beta	0.84
Sharpe Ratio: fund	0.16	Annualised Tracking Error (%)	5.06
Sharpe Ratio: index	0.48	Information Ratio	-0.83
		R <sup>2</sup>	0.84

Calculated using month-end data points. Definitions of these terms can be found in the Glossary section of this factsheet.

## Introduction

This factsheet contains information about the composition of the fund at a particular point in time. It aims to help you understand how the fund manager is positioned to achieve the fund's objectives.

The Equity Exposure table below provides an overall view of the fund. This represents - in percentage terms - how much of the fund is invested in the market. The higher the figure, the more the fund will take part in any market rises (or falls).

The definitions section provides a more comprehensive explanation of the individual elements in the table.

The exposure and positioning tables on page 4 break the fund down into a number of different views, each providing a different perspective on the fund's investments.

## How data is calculated and presented

Portfolio composition data has been calculated and presented according to several general principles, which are listed below.

- **Aggregation:** all investments, including derivatives, linked to a particular issuing company have been combined to form a total percentage holding for each company. The aggregate holding is referred to in this factsheet as a position. Where a company is listed in two separate countries, each listing may be classified as a separate issuing company. Exchange Traded Funds (ETFs) and derivatives on ETFs are treated as individual securities - ie not aggregated.
- **Categorisation:** for investments that have underlying securities we use the attributes of the underlying issuing company or common share to determine the appropriate sector, market capitalisation band and geographic area.
- **Derivatives:** all derivatives are included on an exposure basis and, where necessary, are delta-adjusted. Delta-adjusting expresses derivatives in terms of the equivalent number of shares that would be needed to generate the same return.
- **"Basket" securities:** securities that represent a number of company shares - like index futures or options - are allocated to categories (such as sector) whenever possible. Otherwise they are included in the "Other Index / Unclassified" category.

## Equity Exposure (% TNA)

	Exposure (% TNA)
Equity	98.9
Other	0.0
Uninvested Cash	1.1

### Definition of terms:

**Equity:** the percentage of the fund that is currently invested in the equity market.

**Other:** the value of any non-equity investments (excluding cash funds) expressed as a percentage of fund TNA.

**Uninvested cash:** this is 100% minus the fund's Equity exposure and minus Other. This leaves any residual cash exposure that is not invested in shares or via derivatives.

**% TNA:** Data is presented as a percentage of TNA, which stands for Total Net Assets (the value of all the fund's assets after the deduction of any liabilities).

## Active Money

Active Money	91.3%
--------------	-------

This is the sum of the fund's overweight positions (including effective cash) when compared to the market index.

## Sector/Industry Exposure (% TNA)

GICS Sector	Fund	Index	Relative
Financials	22.1	29.5	-7.4
Consumer Staples	16.7	5.0	11.7
Information Technology	15.0	20.2	-5.2
Real Estate	11.8	3.7	8.1
Consumer Discretionary	11.3	6.8	4.5
Industrials	8.2	3.4	4.8
Utilities	5.1	6.0	-0.9
Materials	4.6	10.2	-5.5
Communication Services	4.1	4.9	-0.8
Energy	0.0	9.8	-9.8
Health Care	0.0	0.5	-0.5
<b>Total Sector Exposure</b>	<b>98.9</b>	<b>100.0</b>	
Other Index / Unclassified	0.0	0.0	
<b>Total Equity Exposure</b>	<b>98.9</b>	<b>100.0</b>	

## Geographic Exposure (% TNA)

	Fund	Index	Relative
China	18.6	22.5	-3.9
Taiwan	16.1	22.5	-6.4
Australia	15.6	19.7	-4.1
Korea (South)	13.6	4.5	9.2
Hong Kong	11.6	6.5	5.1
Singapore	6.8	9.4	-2.6
India	5.7	5.0	0.7
Thailand	3.1	1.4	1.7
Indonesia	2.6	5.6	-3.0
United Kingdom	2.2	0.0	2.2
Others	2.8	2.8	0.0
<b>Total Geographic Exposure</b>	<b>98.9</b>	<b>100.0</b>	
Other Index / Unclassified	0.0	0.0	
<b>Total Equity Exposure</b>	<b>98.9</b>	<b>100.0</b>	

## Top Positions (% TNA)

	GICS Sector	Geographic Location	Fund	Index	Relative
TAIWAN SEMICONDUCTOR MFG CO LTD	Information Technology	Taiwan	7.4	0.0	7.4
SAMSUNG ELECTRONICS CO LTD	Information Technology	Korea (South)	6.1	0.0	6.1
SWIRE PACIFIC LTD	Real Estate	Hong Kong	4.8	0.0	4.8
CHINA YANGTZE POWER CO LTD	Utilities	China	3.5	0.4	3.1
SAMSUNG FIRE&MARINE INS CO LTD	Financials	Korea (South)	3.5	0.5	2.9
TREASURY WINE ESTATES LTD	Consumer Staples	Australia	3.4	0.0	3.4
SINGAPORE EXCHANGE LTD	Financials	Singapore	3.4	0.4	3.0
DBS GROUP HLDGS LTD	Financials	Singapore	3.4	3.7	-0.4
AIA GROUP LTD	Financials	Hong Kong	3.3	0.0	3.3
UNI-PRESIDENT ENTERPRISES CORP	Consumer Staples	Taiwan	3.2	0.9	2.3

## Top Overweight Positions (% TNA)

	Fund	Index	Relative
TAIWAN SEMICONDUCTOR MFG CO LTD	7.4	0.0	7.4
SAMSUNG ELECTRONICS CO LTD	6.1	0.0	6.1
SWIRE PACIFIC LTD	4.8	0.0	4.8
TREASURY WINE ESTATES LTD	3.4	0.0	3.4
AIA GROUP LTD	3.3	0.0	3.3
EMBASSY OFFICE PARKS REIT	3.2	0.0	3.2
THAI BEVERAGE PUBLIC CO LTD	3.1	0.0	3.1
CHINA YANGTZE POWER CO LTD	3.5	0.4	3.1
EVOLUTION MINING LTD	3.0	0.0	3.0
SINGAPORE EXCHANGE LTD	3.4	0.4	3.0

## Positions Concentration (% TNA)

	Fund	Index
Top 10	42.0	35.9
Top 20	68.1	52.1
Top 50	98.9	76.3

### Definition of terms:

**Index:** the index used in the positioning tables on this page is the index defined in the Performance Comparator(s) section on page 2 of this factsheet.

**Top Positions:** those companies in which the largest percentages of the fund's total net assets are effectively invested. Positions in other funds - including ETFs (Exchange Traded Funds) - can appear in this table, but index derivatives form part of an "Other Index / Unclassified" category which will not appear.

**Top Overweight & Underweight Positions:** those positions which have the largest active weight relative to the index. Positions in other funds - including ETFs (Exchange Traded Funds) - can appear in this table, but index derivatives form part of an "Other Index / Unclassified" category which will not appear.

**Positions Concentration:** illustrates the weight of the top 10, 20 and 50 positions in the fund and the weight of the top 10, 20 and 50 positions in the index. It does not attempt to show the coincidence of security ownership between fund and index.

The **sector/industry classification** used (ie GICS, ICB, TOPIX or IPD) varies by fund. Full descriptions of GICS, ICB, TOPIX and IPD can be found in the glossary.

Figures may not always sum to totals due to rounding

## Market Capitalisation Exposure (% TNA)

GBP	Fund	Index	Relative
>10bn	42.1	71.2	-29.1
5-10bn	18.5	19.3	-0.8
1-5bn	27.0	8.9	18.1
0-1bn	7.7	0.3	7.4
<b>Total Market Cap Exposure</b>	<b>95.3</b>	<b>99.7</b>	
Index / Unclassified	3.5	0.3	
<b>Total Equity Exposure</b>	<b>98.9</b>	<b>100.0</b>	

## Regional Exposure (% TNA)

	Fund	Index	Relative
Emerging Asia	59.8	64.0	-4.2
Asia Pacific (ex-Japan)	34.0	36.0	-2.0
UK	2.2	0.0	2.2
Japan	1.8	0.0	1.8
Europe (Eurozone)	1.0	0.0	1.0
<b>Total Regional Exposure</b>	<b>98.9</b>	<b>100.0</b>	
Other Index / Unclassified	0.0	0.0	
<b>Total Equity Exposure</b>	<b>98.9</b>	<b>100.0</b>	

## Attribution

Performance attribution is produced in the currency shown below. For funds with multiple share classes, the attribution return reflects the aggregate performance across all the share classes. It may therefore deviate from the published return for a particular share class. When using the analysis for hedged share classes, please consider that the attribution is shown before the impact of hedging.

The contributions shown in the tables are before the impact of charges. If charges are applied, their effect is captured in the "Other" category in the tables and will also be reflected in the fund return.

All investments, including derivatives, linked to a particular issuing company have been combined to form a total percentage for each issuing company.

The sector/industry and geographic contribution tables (where relevant) display a maximum of eleven individual entries. Where applicable, only top five and bottom five are listed, with the remaining contribution shown in the "Other Sectors" or "Others" category.

Currency of attribution

UK Sterling (GBP)

One month relative return (%)

-1.25

## Position Contribution (%)

1 month

			Relative			
			Performance			
			Contribution			
Top Contributors	Average Relative Weight			Top Detractors	Average Relative Weight	Relative Performance Contribution
TAIWAN SEMICONDUCTOR MFG CO LTD	7.3		0.59	HON HAI PRECISION INDUSTRY CO LTD	-3.8	-1.32
EVOLUTION MINING LTD	2.8		0.50	AIA GROUP LTD	3.7	-0.77
SAMSUNG ELECTRONICS CO LTD	5.8		0.35	CHINA MENGNIU DAIRY CO	2.2	-0.39
CHINA CONSTRUCTION BANK	-4.6		0.25	INFOSYS LTD	1.6	-0.23
KIA CORP	-1.8		0.21	COLLINS FOODS LTD	2.2	-0.23
SAMSUNG FIRE&MARINE INS CO LTD	3.9		0.20	BGF RETAIL CO LTD	1.3	-0.21
TELKOM INDONESIA PERSERO TBK PT (DEMAT)	-0.9		0.16	THAI BEVERAGE PUBLIC CO LTD	3.2	-0.17
HCL TECHNOLOGIES LTD	-1.4		0.14	EMBASSY OFFICE PARKS REIT	3.4	-0.17
INDUSTRIAL & COML BK CHINA	-2.8		0.12	HKBN LTD	0.4	-0.16
ALS LTD	1.3		0.09	ENN ENERGY HLDGS LTD	1.6	-0.15

Positions in other funds - including ETFs (Exchange Traded Funds) - can appear in this table, but index derivatives form part of an "Index / Unclassified" category which will appear in the table(s) below when relevant.

## Sector/Industry Contribution (%)

1 month

Contributions To Relative Return

	Average Relative Weight	Security Selection	Sector/ Industry Selection	Total Relative Contribution
<b>GICS Sector</b>				
Materials	-5.7	0.65	-0.09	0.57
Industrials	4.7	0.34	-0.08	0.26
Health Care	-0.6	0.00	0.11	0.11
Energy	-9.8	0.00	0.02	0.02
Utilities	-0.5	-0.10	0.11	0.02
Communication Services	-0.3	-0.11	0.08	-0.03
Real Estate	8.2	-0.07	-0.13	-0.20
Consumer Discretionary	2.4	-0.17	-0.07	-0.24
Financials	-6.3	-0.20	-0.23	-0.44
Information Technology	-4.8	0.73	-1.41	-0.68
Consumer Staples	12.3	-0.86	-0.02	-0.88
<b>Total Primary Assets</b>	<b>-0.3</b>	<b>0.21</b>	<b>-1.70</b>	<b>-1.49</b>
Other*	0.3			0.24
<b>Total</b>	<b>0.0</b>			<b>-1.25</b>

## Geographic Contribution (%)

1 month

Contributions To Relative Return

	Average Relative Weight	Security Selection	Geographic Selection	Total Relative Contribution
Korea (South)	9.4	1.39	-0.64	0.74
Australia	-4.0	0.33	-0.02	0.31
Indonesia	-3.3	0.17	0.07	0.24
Malaysia	-2.2	0.00	0.07	0.07
New Zealand	-0.4	0.00	0.03	0.03
Thailand	1.8	-0.10	-0.04	-0.14
India	1.0	-0.13	-0.04	-0.17
Singapore	-3.0	-0.18	-0.08	-0.26
Hong Kong	8.3	-0.41	-0.36	-0.78
Taiwan	-5.1	-1.03	-0.36	-1.39
Others	-2.8	-0.36	0.20	-0.16
<b>Total Primary Assets</b>	<b>-0.3</b>	<b>-0.32</b>	<b>-1.16</b>	<b>-1.49</b>
Other*	0.3			0.24
<b>Total</b>	<b>0.0</b>			<b>-1.25</b>

\*Other includes portfolio components not already listed such as cash, expenses and other miscellaneous items.

## ESG Metrics

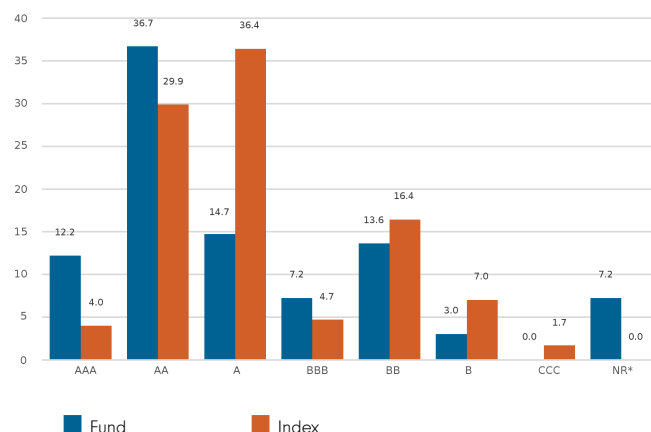
The factsheet is a snapshot of the portfolio at the date indicated above. ESG ratings distribution may vary over time. Representation of this data is for informational purposes only. If the SFDR classification is shown as 6 below then this fund does not promote environmental or social characteristics nor does it have a sustainable investment objective. If it is shown as 8, the fund promotes environmental or social characteristics. If it is shown as 9, the fund has a sustainable investment objective. Product-specific information can be found on our website at [www.fidelityinternational.com](http://www.fidelityinternational.com)

### Sustainability Characteristics (31.03.2024)

	Fund	Index
MSCI ESG Fund Rating (AAA-CCC)	<b>A</b>	<b>N/R</b>
Weighted Average Carbon Intensity (tCo2e/\$M Revenue)	<b>87.4</b>	<b>279</b>
SFDR Classification	<b>N/A</b>	<b>N/A</b>

N/A - Not Applicable  
 N/R - Not Rated

### MSCI Ratings Distribution % (31.03.2024)



ESG Fund rating based on holding as at 31.01.24 with 93.6% security coverage. Carbon intensity data based on holdings as at 31.03.24 with 94.6% security coverage.

## Glossary

**MSCI ESG Fund Rating:** This shows the fund's ESG rating based on the Quality Scores given to the fund by MSCI. This ranges from AAA, AA (Leader), A, BBB, BB (Average) to B, CCC (Laggard). To be included in MSCI ESG Fund Ratings, 65% of the fund's gross weight must come from covered securities (and excluding cash), the fund's holdings date must be less than one year old and the fund must have at least ten securities.

**Weighted Average Carbon Intensity:** is calculated as the sum of each portfolio weight multiplied by the Co2e per \$M of Revenue of each holding. This metric provides a snapshot of the fund's exposure to carbon-intensive companies and includes scope 1 and scope 2 carbon emissions. For carbon data, the coverage of underlying securities must be over 50% for data to be shown.

**SFDR Classification:** Shows the classification given to each fund as part of the EU Sustainable Finance Disclosure Regulation (SFDR). Article 9 funds aim to achieve an ESG outcome and are products with ESG objectives. Article 8 funds focus on promoting ESG characteristics and this must be a primary focus of the product. Article 6 funds integrate sustainability risks (unless specified otherwise in the prospectus) into investment analysis and decision-making, without the funds promoting environmental or social characteristics or having sustainable investments as their objective.

**MSCI Ratings Distribution:** This shows the percentage distribution of ESG ratings in the fund, based on the Net Asset Value of holdings excluding cash, liquidity funds, derivatives and Exchange Traded Funds.

## Disclaimer

ESG Rating Source: ©2024 MSCI ESG Research LLC. Reproduced by permission, no further distribution. MSCI ESG Research LLC and its affiliates (the "ESG Parties"), obtain information from sources they consider reliable, none of the ESG Parties warrants or guarantees the originality, accuracy and/or completeness of any data herein. None of the ESG Parties makes any express or implied warranties of any kind, and the ESG Parties hereby expressly disclaim all warranties of merchantability and fitness for a particular purpose, with respect to any data herein. None of the ESG Parties shall have any liability for any errors or omissions in connection with any data herein. Further, without limiting any of the foregoing, in no event shall any of the ESG Parties have any liability for any direct, indirect, special, punitive, consequential or any other damages (including lost profits) even if notified of the possibility of such damages. The information is as at the date of production based on data provided by MSCI. There may be timing differences between the date at which data is captured and reported. For more up to date information, you can visit <https://www.msci.com/esg-fund-ratings>

Carbon Data Source: Data provided by ISS ESG. All rights in the information provided by Institutional Shareholder Services Inc. and its affiliates (ISS) reside with ISS and/or its licensors. ISS makes no express or implied warranties of any kind and shall have no liability for any errors, omissions or interruptions in or in connection with any data provided by ISS. The information is as at the date of production based on carbon data provided by ISS. There may be timing differences between the date at which data is captured and reported.

SFDR Classification is assigned by Fidelity in line with the EU Sustainable Financial Disclosure Regulation.

## Glossary / additional notes

### Volatility & Risk

**Annualised volatility:** a measure of how variable returns for a fund or comparative market index have been around their historical average (also known as “standard deviation”). Two funds may produce the same return over a period. The fund whose monthly returns have varied less will have a lower annualised volatility and will be considered to have achieved its returns with less risk. The calculation is the standard deviation of 36 monthly returns presented as an annualised number. Volatility for funds and indices are calculated independently of each other.

**Relative volatility:** a ratio calculated by comparing the annualised volatility of a fund to the annualised volatility of a comparative market index. A value greater than 1 indicates the fund has been more volatile than the index. A value less than 1 shows the fund has been less volatile than the index. A relative volatility of 1.2 means the fund has been 20% more volatile than the index, while a measure of 0.8 would mean the fund has been 20% less volatile than the index.

**Sharpe ratio:** a measure of a fund’s risk-adjusted performance, taking into account the return on a risk-free investment. The ratio allows an investor to assess whether the fund is generating adequate returns for the level of risk it is taking. The higher the ratio, the better the risk-adjusted performance has been. If the ratio is negative, the fund has returned less than the risk-free rate. The ratio is calculated by subtracting the risk-free return (such as cash) in the relevant currency from the fund’s return, then dividing the result by the fund’s volatility. It is calculated using annualised numbers.

**Annualised alpha:** the difference between a fund’s expected return (based on its beta) and the fund’s actual return. A fund with a positive alpha has delivered more return than would be expected given its beta.

**Beta:** a measure of a fund’s sensitivity to market movements (as represented by a market index). The beta of the market is 1.00 by definition. A beta of 1.10 shows that the fund could be expected to perform 10% better than the index in up markets and 10% worse in down markets, assuming all other factors remain constant. Conversely, a beta of 0.85 indicates that the fund could be expected to perform 15% worse than the market return during up markets and 15% better during down markets.

**Annualised tracking error:** a measure showing how closely a fund follows the index to which it is being compared. It is the standard deviation of the fund’s excess returns. The higher the fund’s tracking error, the higher the variability of fund returns around the market index.

**Information ratio:** a measure of a fund’s effectiveness in generating excess return for the level of risk taken. An information ratio of 0.5 shows the fund has delivered an annualised excess return equivalent to half the value of the tracking error. The ratio is calculated by taking the fund’s annualised excess return and dividing it by the fund’s tracking error.

**R<sup>2</sup>:** a measure representing the degree to which a fund’s return can be explained by the returns of a comparative market index. A value of 1 signifies the fund and index are perfectly correlated. A measure of 0.5 means only 50% of the fund’s performance can be explained by the index. If the R<sup>2</sup> is 0.5 or lower, the fund’s beta (and therefore its alpha too) is not a reliable measure (due to a low correlation between fund and index).

### Ongoing charges

The ongoing charges figure represents the charges taken from the fund over a year. It is calculated at the fund’s financial year end and may vary from year to year. For classes of funds with fixed ongoing charges, this may not vary from year to year. For new classes of funds or classes undergoing corporate actions (eg amendment to annual management charge), the ongoing charges figure is estimated until the criteria are met for an actual ongoing charges figure to be published.

The types of charges included in the ongoing charges figure are management fees, administration fees, custodian and depositary fees and transaction charges, shareholder reporting costs, regulatory registration fees, Directors fees (where applicable) and bank charges.

It excludes: performance fees (where applicable); portfolio transaction costs, except in the case of an entry/exit charge paid by the fund when buying or selling units in another collective investment undertaking.

For more information about charges (including details of the fund’s financial year end), please consult the charges section in the most recent Prospectus.

### Historic yield

The historic yield for a fund is based on its dividends declared over the preceding 12 months. It is calculated by summing the dividend rates declared in that period, divided by the price as at the date of publication. Declared dividends may not be confirmed and may be subject to change. Where 12 months of declared dividend data does not exist a historic yield will not be published.

### Sector/industry classification

**GICS:** The Global Industry Classification Standard is a taxonomy mainly used across MSCI and S&P indices in which each company is assigned by its principal business activity to one of 11 sectors, 24 industry groups, 69 industries and 158 sub-industries. More information is available at <http://www.msci.com/gics>

**ICB:** The Industry Classification Benchmark is a taxonomy mainly used across FTSE Russell indices in which each company is assigned by its principal business activity to one of 11 industries, 20 supersectors, 45 sectors and 173 subsectors. More information is available at <https://www.ftserussell.com/data/industry-classification-benchmark-icb>

**TOPIX:** Tokyo stock Price Index, commonly known as TOPIX, is a stock market index for the Tokyo Stock Exchange (TSE) in Japan, tracking all domestic companies of the exchange’s First Section. It is calculated and published by the TSE.

**IPD** means the Investment Property Databank who are a provider of performance analysis and benchmarking services for investors in real estate. IPD UK Pooled Property Funds Index – All Balanced Funds is a component of the IPD Pooled Funds Indices which is published quarterly by IPD.

### Independent Assessment

**Primary share class:** is identified by Morningstar when the analysis calls for only one share class per fund to be in the peer group. It is the share class Morningstar recommends as the best proxy for the portfolio for the relevant market and category/GIF combination. In most cases the share class chosen will be the most retail version (based upon actual management charge, inception date, distribution status, currency and other factors) unless a share class that is less retail focused has a much longer track record. It is different to the oldest share class data point in that it is on an available for sale level and not all markets will have the oldest share class for sale in that region. The Primary share class is also based on category so each available for sale/category combination for the fund will have its own primary share class.

**Portfolio Turnover Rate (PTR) and Portfolio Turnover Cost (PTC), where shown:** SRII does not define a methodology for these values; ours is as follows: **PTR** = (purchases of securities + sales of securities) minus (subscriptions of units + redemptions of units), divided by average fund value over the prior 12 months multiplied by 100. Any funds’ trading in Fidelity Institutional Liquidity Funds is excluded from the PTR calculation. **PTC** = PTR (capped at 100%) x transaction cost, where transaction cost is calculated as ex-post (i.e. prior 12 months) MiFID disclosure of portfolio transaction costs minus implicit costs.

**Important Information**

This is a marketing communication. This information must not be reproduced or circulated without prior permission.

Fidelity only offers information on products and services and does not provide investment advice based on individual circumstances, other than when specifically stipulated by an appropriately authorised firm, in a formal communication with the client.

Fidelity International refers to the group of companies which form the global investment management organisation that provides information on products and services in designated jurisdictions outside of North America. This communication is not directed at, and must not be acted upon by persons inside the United States and is otherwise only directed at persons residing in jurisdictions where the relevant funds are authorised for distribution or where no such authorisation is required.

Unless otherwise stated all products and services are provided by Fidelity International, and all views expressed are those of Fidelity International. Fidelity, Fidelity International, the Fidelity International logo and F symbol are registered trademarks of FIL Limited.

FIL Limited assets and resources as at 28/02/2023 - data is unaudited. Research professionals include both analysts and associates. Fidelity Investment Funds, Fidelity Investment Funds 2, Fidelity Investment Funds III, Fidelity Investment Funds IV, Fidelity Investment Funds VIII and Fidelity Investment Funds IX are open-ended investment companies (OEICs) with variable capital, incorporated in England and Wales, being authorised and regulated by the Financial Conduct Authority. The Authorised Corporate Director of these OEICs is FIL Investment Services (UK) Limited.

Data Source - © 2024 Morningstar, Inc. All Rights Reserved. The information contained herein:

- (1) is proprietary to Morningstar and/or its content providers;
- (2) may not be copied or distributed; and
- (3) is not warranted to be accurate, complete or timely. Neither Morningstar nor its content providers are responsible for any damages or losses arising from any use of this information.

This share class is registered and distributed in the following locations: United Kingdom.

**United Kingdom** : Investments should be made on the basis of the KIID (key investor information document) which is available at [www.fidelity.co.uk](http://www.fidelity.co.uk) The full prospectus may also be obtained from Fidelity. Issued by FIL Investment Services (UK) Limited, a firm authorised and regulated in the UK by the Financial Conduct Authority. This document may be provided to you by a distributor, including a Fidelity International distributor such as FIL Pensions Management or Financial Administration Services Limited, both of which are authorised and regulated by the Financial Conduct Authority.

CSO4925 CL1305901/NA GB\_English 28050 T1a