

## Strategy

The fund invests primarily in sterling denominated investment grade corporate bonds. The fund seeks to generate attractive income with lower volatility compared to other asset classes such as equities and property. Emphasis is put on bottom up issuer selection and ensuring adequate diversity due to the asymmetric nature of corporate bond returns. The manager has flexibility to invest in out-of-index strategies as a means of adding performance but adherence to the investment objective remains imperative. The fund is managed according to Fidelity's active philosophy and approach to fixed income investing. This is team-based, but led by the Portfolio Manager to generate attractive risk-adjusted returns through combining multiple, diversified investment positions advised by in-house fundamental credit research, quantitative modelling and specialist traders.

## Objectives & Investment Policy

**Objective:** The fund aims to deliver an income with the potential to increase the value of your investment.

**Investment Policy:** The fund is part of the Fidelity Sustainable Family of Funds and adheres to the Fidelity Sustainable Family Framework under which at least 70% of the fund's net assets will be invested in issuers deemed to maintain sustainable characteristics. The fund will also adhere to the Fidelity Sustainable Family exclusion policy. Investments may be made in relation to debt instruments issued in currencies other than sterling. Hedging back to sterling aims to reduce the risk of exposure to other currencies. Investments with sustainable characteristics are those which the Investment Manager believes have effective governance and management of environmental and social issues and deliver long term sustainable outcomes through positive societal impact. Such investments are identified through Fidelity's Sustainable Investing Process, which is built on three related elements; integrated environmental, social and governance ('ESG') analysis, engagement, and collaboration. Sustainable characteristics based on ESG considerations are analysed by Fidelity and principally assessed based on criteria such as but not limited to, climate change mitigation and adaptation, water and waste management and biodiversity, product safety, supply chain, health and safety and human rights. The fund will be at least 70% exposed to sterling denominated (or hedged back to sterling) investment grade debt instruments (e.g. bonds with a rating of BBB-/Baa or higher from an internationally recognised rating agency), has a bias towards corporate bonds, but may also include securitised bonds. The fund may obtain exposure to companies which demonstrate improving sustainable characteristics and may also invest in other investment types such as cash and derivatives.

**Investment Process:** The fund is actively managed. The Investment Manager identifies suitable opportunities for the fund utilising in-house research and investment capabilities. The Investment Manager will, when selecting investments for the fund and for the purposes of monitoring risk, consider the ICE BofA Euro-Sterling Index. The Investment Manager has a wide degree of freedom relative to the index and may invest in issuers, sectors, countries and security types not included in the index in order to take advantage of investment opportunities. This means the fund's investments and therefore performance may vary significantly from the index.

**Derivatives and Techniques:** Derivatives are investments whose value is linked to another investment, or to the performance of a stock exchange or to some other variable factor, such as interest rates and used to reduce risk or transaction costs and/or to generate extra income or further increase the value of your investment. The fund may also use derivatives with the aim of achieving the investment objective.

**Additional information:** Income from the Fund is either paid out to you or it is used to buy you more shares in the Fund. As the fund aims to generate an income some charges will be taken from the fund rather than the income generated by the fund. This means the amount payable as income may be increased and the potential to increase the value of your investment may be reduced. Shares can usually be bought and sold each business day of the Fund.

Further information on sustainable stock selection for the fund can be found at [www.fidelity.co.uk/sustmbinfo](http://www.fidelity.co.uk/sustmbinfo)

More information on sustainable investing can be found in the 'Sustainable Investing' section of the Prospectus.

The fund's performance can be compared to the ICE BofA Euro-Sterling Index.

## Fund Facts

**Launch date:** 12.09.95

**Portfolio manager:** Kris Atkinson, Shamil Gohil

**Appointed to fund:** 01.01.19, 01.03.23

**Years at Fidelity:** 24, 1

**Fund size:** £ 1,716m

**Fund reference currency:** UK Sterling (GBP)

**Fund domicile:** United Kingdom

**Fund legal structure:** OEIC

**Management company:** FIL Investment Services (UK) Limited

**Capital guarantee:** No

**Portfolio Turnover Cost (PTC):** 0.00%

**Portfolio Turnover Rate (PTR):** 129.31%

## Share Class Facts

Other share classes may be available. Please refer to the prospectus for more details.

**Launch date:** 05.10.09

**NAV price in share class currency:** 1.003

**ISIN:** GB00B3Z9PT62

**SEDOL:** B3Z9PT6

**Bloomberg:** FIDMBNY LN

**Dealing cut-off:** 12.00 UK time

**Distribution type:** Income

**Distribution frequency:** Monthly

**Charges made to income or capital:** Capital

**Ongoing Charges Figure (OCF) per year:** 0.54% (Estimated)

**OCF takes into account annual management charge per year:** 0.4%

## Share Class Risk and Reward Profile



This risk indicator is taken from the key information document at the relevant month-end. Because it may be updated during a month, please refer to the key information document for the most up-to-date information.

- Historical data may not be a reliable indication for the future.
- The risk category shown is not guaranteed and may change over time.
- The lowest category does not mean a "risk free" investment.
- The risk and reward profile is classified by the level of historical fluctuation of the Net Asset Values of the share class, and within this classification, categories 1-2 indicate a low level of historical fluctuations, 3-5 a medium level and 6-7 a high level.
- The value of your investment may fall as well as rise and you may get back less than you originally invested.
- The fund may invest in instruments denominated in currencies other than the fund base currency. Changes in currency exchange rates can therefore affect the value of your investment.

## Important Information

The value of your investment may fall as well as rise and you may get back less than you originally invested. The use of financial derivative instruments may result in increased gains or losses within the fund. There is a risk that the issuers of bonds may not be able to repay the money they have borrowed or make interest payments. When interest rates rise, bonds may fall in value. Rising interest rates may cause the value of your investment to fall. The investment policy of this fund means it can be more than 35% invested in Government and public securities. These can be issued or guaranteed by other countries and Governments. For a full list please refer to the fund's prospectus. When referring to sustainability - related aspects of the promoted fund, the decision to invest should take into account all characteristics or objectives of the promoted fund as detailed in the Prospectus. Information on sustainability-related aspects is provided pursuant to SFDR at <https://www.fidelity.lu/sfdr-entity-disclosures>.

Past performance does not predict future returns. The fund's returns may increase or decrease as a result of currency fluctuations. The investment which is promoted concerns the acquisition of units or shares in a fund, and not in a given underlying asset owned by the fund.

### Performance Comparator(s)

**Peer Group Universe**

Morningstar IA GBP Corporate Bond

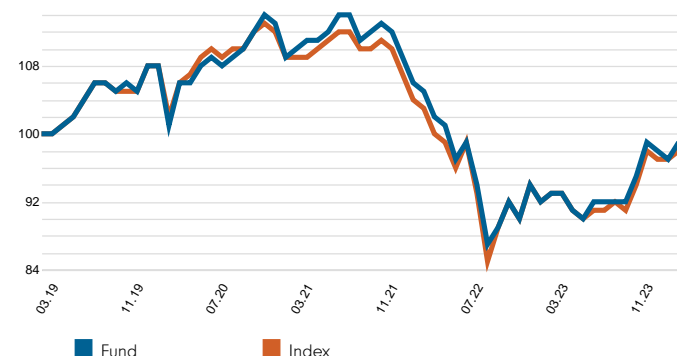
**Market index from 01.05.17**

ICE BofA Euro-Sterling Index

Market index is for comparative purposes only unless specifically referenced in the Objectives & Investment Policy on page 1. The same index is used in the positioning tables on this factsheet.

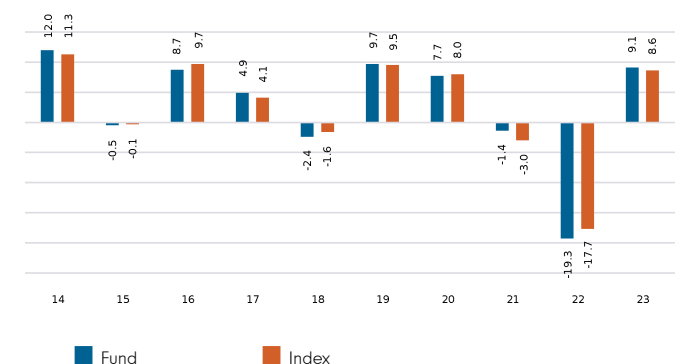
Where the effective date for the current market index is after the share class launch date, full history is available from Fidelity.

### Cumulative performance in GBP (rebased to 100)

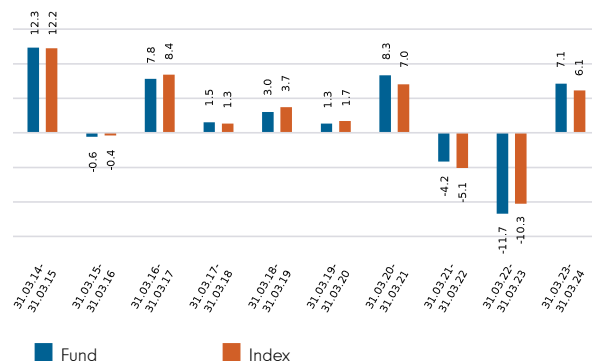


Performance is shown for the last five years (or since launch for funds launched within that period).

### Performance for calendar years in GBP (%)



### Performance for 12 month periods in GBP (%)



### Volatility & Risk

<b>Annualised Volatility: fund (%)</b>	9.14	<b>Annualised Alpha</b>	-0.04
<b>Relative Volatility</b>	0.98	<b>Beta</b>	0.97
<b>Sharpe Ratio: fund</b>	-0.36	<b>Annualised Tracking Error (%)</b>	1.74
<b>Sharpe Ratio: index</b>	-0.36	<b>Information Ratio</b>	0.04
		<b>R<sup>2</sup></b>	0.97

Calculated using month-end data points. Definitions of these terms can be found in the Glossary section of this factsheet.

### Performance to 31.03.24 in GBP (%)

	1m	3m	YTD	1yr	3yr	5yr	Since 05.10.09*
<b>Fund cumulative growth</b>	2.4	0.8	0.8	7.1	-9.4	-0.7	65.6
<b>Index cumulative growth</b>	1.6	0.0	0.0	6.1	-9.6	-1.7	61.7
<b>Fund annualised growth</b>	-	-	-	7.1	-3.2	-0.1	3.5
<b>Index annualised growth</b>	-	-	-	6.1	-3.3	-0.3	3.4
<b>Ranking within Peer Group Universe</b>							
<b>W Income Shares</b>	23	25	25	47	59	56	
<b>Total number of funds</b>	92	92	92	92	89	83	
<b>Quartile ranking**</b>	1	2	2	3	3	3	

The performance figures above include performance prior to the repurpose of the fund on 26 May 2022 from the legacy Fidelity Investment Funds - MoneyBuilder Income Fund. Before this date the performance was achieved in circumstances that no longer apply. Source of fund performance and volatility and risk measures is Fidelity. Performance is excluding initial charge. Basis: bid-bid with income reinvested, in GBP, net of fees. Market indices are sourced from RIMES and other data is sourced from third-party providers such as Morningstar.

\*Performance commencement date.

\*\*Quartile rank is for the fund's primary share class as identified by Morningstar, which may be different than the share class detailed in this factsheet and refers to performance over time rated on a scale of 1-4. A ranking of 1 indicates that the item being ranked is in the top 25% of the sample and so on. Rankings are based on a performance record that is included in the Peer Group Universe. In line with Investment Association methodology, this record may include a track record extension from a legacy share class and the record may not be the same class of this factsheet. Quartile ranking is an internal Fidelity International calculation. Ranking may vary by share class.

## Introduction

This factsheet contains information about the composition of the fund at a particular point in time. It aims to help you understand how the manager has positioned the fund to meet its objectives. Each table shows a different breakdown of the fund's investments. The index used in the positioning tables is the index defined in the Performance Comparator(s) section on page 2 of this factsheet.

## Portfolio Characteristics

	Fund	Index	Relative		Fund
Distribution Yield (%)	5.0	-	-	Underlying Yield (%)	3.9
Effective Duration	6.2	5.8	0.4	<p>The Underlying Yield is shown because this fund distributes coupon* income and this will constrain the fund's capital performance. The Underlying Yield is the amount of income per year that could be paid to investors without eroding the fund's capital value. It is lower than the Distribution Yield because any capital losses that would occur at redemption on bonds purchased above their face value are reflected in the calculation. The Underlying Yield is net of the fund's ongoing charges but does not include any entry charge. The Underlying Yield is gross of tax and investors may be subject to tax on distributions.</p> <p>*The coupon is the interest rate stated on a bond when it is issued.</p>	
Running Yield (%)	5.2	4.1	1.2		
Yield to Maturity (%)	5.8	5.1	0.6		
Spread Duration	5.0	5.9	-0.8		
Option Adjusted Spread (Basis Points)	123	96	28		
Duration Times Spread (DTS)	666	588	78		
Number of Holdings	191	-	-		
Number of Names	130	-	-		
Average Credit Rating (Exponential)	BBB	A-	n / a		
Average Credit Rating (Linear)	BBB+	A	n / a		
Average Maturity (years)	12.7	9.0	3.7		
Average Coupon (%)	4.8	3.9	0.9		

Definitions of these characteristics can be found in the Glossary section of this factsheet.

## Derivatives Exposure

	Long %	Short %	Net %	Gross %
Bond / Interest Rate Futures	13.66	-6.89	6.77	20.54
Interest Rate Swaps	13.44	0.00	13.44	13.44
Inflation Indexed Swaps	0.00	0.00	0.00	0.00
Credit Default Swaps	0.00	0.00	0.00	0.00
Index Credit Default Swaps	0.00	-1.24	-1.24	1.24
Mortgage To Be Announced	0.00	0.00	0.00	0.00
<b>TOTAL</b>				<b>35.22</b>

Exposure as a percent of total net assets. Excludes FX forwards.

## Asset Allocation

	Security Holdings (excl. Derivatives)			Contribution to Duration (incl. Derivatives)			Contribution to Duration Times Spread (incl. Derivatives)		
	Fund	Index	Relative	Fund	Index	Relative	Fund	Index	Relative
Treasury	4.75	0.03	4.71	0.7	0.0	0.7	2	0	2
Index Linked	0.00	0.00	0.00	0.0	0.0	0.0	0	0	0
Investment Grade - Sovs Supras & Agencies	2.67	26.74	-24.07	0.1	1.1	-1.0	14	47	-33
Investment Grade - Financials	29.94	36.95	-7.01	1.8	2.1	-0.4	246	255	-9
Investment Grade - Non-Financials	31.07	32.02	-0.95	1.8	2.3	-0.6	258	254	5
Investment Grade - ABS	20.12	3.10	17.02	0.9	0.2	0.7	127	25	102
Investment Grade - Emerging Markets	0.71	0.75	-0.05	0.0	0.0	0.0	11	4	7
High Yield	5.39	0.38	5.02	0.2	0.0	0.1	34	2	32
Index Credit Default Swaps	0.00	0.00	0.00	0.0	0.0	0.0	0	0	0
Other	3.68	0.02	3.66	0.2	0.0	0.2	35	0	35
Interest Rate Derivatives	0.00	0.00	0.00	0.0	0.0	0.0	0	0	0
FX / Derivative P&L	-0.01	0.00	-0.01	0.6	0.0	0.6	-61	0	-61
Cash	1.68	0.00	1.68	0.0	0.0	0.0	0	0	0
Rounding adjustment	0.00	0.01	-	-0.1	0.1	0.1	0	1	-2
<b>TOTAL</b>	<b>100.00</b>	<b>100.00</b>	<b>-</b>	<b>6.2</b>	<b>5.8</b>	<b>0.4</b>	<b>666</b>	<b>588</b>	<b>78</b>

Security Holdings as a percent of total net assets. Contribution to duration (CTD) and contribution to duration-times-spread (DTS) are in the appropriate units of measure. CTD and DTS include the effect of derivatives. 'FX / Derivative P&L' includes collateral balances with counterparties arising from derivatives used in the fund (this can lead to a negative balance). 'Index linked' includes non-government index linked bonds.

## Sector Positioning

	Security Holdings (excl. Derivatives)			Contribution to Duration Times Spread (incl. Derivatives)		
	Fund	Index	Relative	Fund	Index	Relative
Treasury	4.75	0.03	4.71	2	0	2
Quasi / Sov / Supra / Agency	2.67	27.13	-24.46	14	49	-35
Agency Mortgages	0.00	0.00	0.00	0	0	0
Banks & Brokers	13.57	21.12	-7.55	79	110	-31
Insurance	4.35	5.40	-1.05	59	48	11
Property	4.67	2.82	1.84	42	23	19
Other Financials	11.39	6.45	4.94	134	74	61
Basic Industry	0.00	0.36	-0.36	0	2	-2
Capital Goods	0.00	0.92	-0.92	0	5	-5
Consumer Cyclical	2.74	4.76	-2.02	17	21	-4
Consumer Non Cyclical	0.61	4.12	-3.51	7	21	-14
Energy	0.94	1.10	-0.16	7	6	1
Transportation	6.98	3.03	3.95	70	23	47
Technology	0.23	0.73	-0.51	1	4	-2
Communications	3.45	4.92	-1.47	21	40	-19
Industrial Other	0.00	0.50	-0.50	0	4	-4
Utility	17.15	12.34	4.81	142	133	10
Covered	0.00	1.24	-1.24	0	2	-2
Non Agency	10.93	1.23	9.70	68	11	57
ABS / MBS	13.92	1.79	12.13	81	13	68
Unclassified	0.00	0.00	0.00	0	0	0
Index Credit Default Swaps	0.00	0.00	0.00	-17	0	-17
Interest Rate Derivatives	0.00	0.00	0.00	0	0	0
FX / Derivative P&L	-0.01	0.00	-0.01	-61	0	-61
Cash	1.68	0.00	1.68	0	0	0
Rounding adjustment	-0.02	0.01	-	0	-1	-2
<b>Total</b>	<b>100.00</b>	<b>100.00</b>	<b>-</b>	<b>666</b>	<b>588</b>	<b>78</b>

Security Holdings as a percent of total net assets. Contribution to duration-times-spread (DTS) in the appropriate unit of measure. DTS includes the effect of derivatives. 'FX / Derivative P&L' includes collateral balances with counterparties arising from derivatives used in the fund (this can lead to a negative balance).

## Financial Sector Exposure By Capital Structure

	Security Holdings (excl. Derivatives)			Contribution to Duration Times Spread (incl. Derivatives)		
	Fund	Index	Relative	Fund	Index	Relative
Govt Guaranteed	0.00	0.02	-0.02	0	0	0
Covered	0.00	1.24	-1.24	0	2	-2
Senior	21.28	25.83	-4.55	174	158	16
Tier 2	3.28	4.36	-1.07	20	36	-15
Tier 2 CoCo	0.00	0.00	0.00	0	0	0
Tier 1	0.00	0.00	0.00	0	0	0
Additional Tier 1	1.48	0.13	1.36	7	1	6
Insurance Corp Hybrids	1.81	2.41	-0.59	23	27	-4
Other	3.31	0.86	2.45	55	13	42
<b>Total</b>	<b>31.16</b>	<b>34.85</b>		<b>279</b>	<b>237</b>	<b>43</b>

Security Holdings as a percent of total net assets. Contribution to duration-times-spread (DTS) in the appropriate unit of measure. DTS includes the effect of derivatives. 'FX / Derivative P&L' includes collateral balances with counterparties arising from derivatives used in the fund (this can lead to a negative balance). The Financials sector includes the following sub-sectors: Banks & Brokers, Insurance & Covered.

## Duration Breakdown (By Currency)

	Fund			Index	Relative
	Nominal	Real	TOTAL		
GBP	6.31	0.00	6.31	5.79	0.52
JPY	-0.14	0.00	-0.14	0.00	-0.14
USD	0.00	0.00	0.00	0.00	0.00
EUR	0.00	0.00	0.00	0.00	0.00
CAD	0.00	0.00	0.00	0.00	0.00
Other	0.00	0.00	0.00	0.00	0.00
<b>TOTAL</b>	<b>6.17</b>	<b>0.00</b>	<b>6.17</b>	<b>5.79</b>	<b>0.38</b>

Duration includes the effect of interest rate derivatives such as government bond futures, inflation swaps and interest rate swaps. Nominal Fund refers to the sensitivity to nominal yields, whereas Real Fund refers to the sensitivity to inflation-linked / real yields.

## Credit Rating

	Security Holdings (excl. Derivatives)			Contribution to Duration Times Spread (incl. Derivatives)		
	Fund	Index	Relative	Fund	Index	Relative
AAA/Aaa	0.88	20.72	-19.84	-26	21	-47
AA/Aa	10.35	12.50	-2.15	2	39	-37
A	21.26	29.58	-8.32	159	184	-25
BBB/Baa	56.76	36.80	19.96	463	342	121
BB/Ba	3.34	0.38	2.97	20	2	18
B	2.05	0.00	2.05	14	0	14
CCC and Below	0.00	0.00	0.00	0	0	0
Not Rated	3.68	0.02	3.66	35	0	35
Interest Rate Derivatives	0.00	0.00	0.00	0	0	0
FX / Derivative P&L	-0.01	0.00	-0.01	0	0	0
Cash	1.68	0.00	1.68	0	0	0
Rounding adjustment	0.01	0.00	-	-1	0	-1
<b>TOTAL</b>	<b>100.00</b>	<b>100.00</b>	<b>-</b>	<b>666</b>	<b>588</b>	<b>78</b>

Exposure as a percent of total net assets and contribution to duration-times-spread (DTS). 'FX / Derivative P&L' includes collateral balances with counterparties arising from derivatives used in the fund (this can lead to a negative balance). DTS includes the effect of derivatives. For ratings breakdown, worst of the two best ratings from across S&P, Moody's and Fitch is applied (commonly known as the Basel method).

## Maturity Profile (Contribution to Duration)

	Fund	Index	Relative
0 to 1 years	0.4	0.0	0.4
1 to 3 years	0.4	0.5	-0.1
3 to 5 years	0.5	0.8	-0.3
5 to 10 years	1.8	1.3	0.5
10 to 15 years	1.0	0.9	0.1
15 to 20 years	0.8	1.0	-0.2
20 to 25 years	0.2	0.4	-0.2
25 to 30 years	0.6	0.5	0.1
30 to 40 years	0.3	0.3	0.0
40 + years	0.2	0.2	0.0
Rounding adjustment	0.0	-0.1	0.1
<b>TOTAL</b>	<b>6.2</b>	<b>5.8</b>	<b>0.4</b>

Includes the effect of interest rate derivatives such as government bond futures, inflation swaps and interest rate swaps.

## Currency Exposure

	Before Hedging	After Hedging	Index
GBP	96.46	99.98	100.00
EUR	3.54	0.02	0.00
USD	0.00	0.00	0.00
JPY	0.00	0.00	0.00
CAD	0.00	0.00	0.00
Other	0.00	0.00	0.00
<b>TOTAL</b>	<b>100.00</b>	<b>100.00</b>	<b>100.00</b>

Exposure as a percent of total net assets.

This table shows the currency exposure and hedging of the fund's investments.

The "After Hedging" column shows the currency exposure relevant to the investor.

## Regional Exposure - Domicile Of Issuer

	Security Holdings (excl. Derivatives)			Contribution to Duration (incl. Derivatives)			Contribution to Duration Times Spread (incl. Derivatives)		
	Fund	Index	Relative	Fund	Index	Relative	Fund	Index	Relative
Multinational	0.00	11.45	-11.45	0.0	0.5	-0.5	0	9	-9
United States (& Other Amer.)	1.46	12.17	-10.71	0.1	0.7	-0.7	-4	65	-69
Canada	0.28	2.31	-2.03	0.0	0.1	-0.1	1	4	-3
United Kingdom (& Ire.)	82.57	43.40	39.17	4.8	3.1	1.7	624	359	265
France	2.19	8.17	-5.97	0.1	0.5	-0.4	11	56	-45
Germany (& Aust.)	3.26	8.82	-5.56	0.2	0.3	-0.2	26	24	2
Benelux	2.42	3.29	-0.87	0.1	0.1	0.0	23	13	10
Scandinavia	2.49	3.56	-1.07	0.1	0.1	0.0	18	13	5
Mediterranean	2.13	2.71	-0.58	0.1	0.1	0.0	14	17	-4
Switzerland	0.83	0.99	-0.16	0.0	0.0	0.0	3	5	-2
Other Europe	0.00	0.21	-0.21	0.0	0.0	0.0	0	2	-2
Japan	0.00	0.64	-0.64	0.0	0.0	0.0	0	2	-2
Australia & N.Z.	0.00	1.20	-1.20	0.0	0.1	-0.1	0	7	-7
Asia ex Japan ex Aus.	0.00	0.25	-0.25	0.0	0.0	0.0	0	1	-1
C.I.S / Eastern Europe	0.71	0.04	0.66	0.0	0.0	0.0	11	1	11
Latin America	0.00	0.50	-0.50	0.0	0.0	0.0	0	8	-8
Middle East / N Africa	0.00	0.25	-0.25	0.0	0.0	0.0	0	1	-1
Sub-Saharan Africa	0.00	0.05	-0.05	0.0	0.0	0.0	0	0	0
Other	0.00	0.00	0.00	0.0	0.0	0.0	0	0	0
Unclassified	0.00	0.00	0.00	0.0	0.0	0.0	0	0	0
FX / Derivative P&L	-0.01	0.00	-0.01	0.6	0.0	0.6	-61	0	-61
Index Credit Default Swaps	0.00	0.00	0.00	0.0	0.0	0.0	0	0	0
Cash	1.68	0.00	1.68	0.0	0.0	0.0	0	0	0
Rounding adjustment	-0.01	-0.01	-	0.1	0.2	0.1	0	1	-1
Total	100.00	100.00	-	6.2	5.8	0.4	666	588	78

Security Holdings as a percent of total net assets. Contribution to duration (CTD) and contribution to duration-times-spread (DTS) are in the appropriate units of measure. CTD and DTS include the effect of derivatives. 'FX / Derivative P&L' includes collateral balances with counterparties arising from derivatives used in the fund (this can lead to a negative balance).

## Top 10 Long Exposures By Issuer

	Fund	Index	Relative
(UKT) United Kingdom of Great Britain	4.75	0.00	4.75
(NGGLN) Wstrn Pwr Distr West Mid	2.30	0.94	1.36
(HTHROW) Heathrow Funding Ltd	2.21	0.80	1.41
(TELSEC) Telereal Securitisation	2.12	0.17	1.95
(BACR) Barclays Plc	2.03	1.22	0.81
(HSBC) Hsbc Holdings Plc	1.78	1.85	-0.07
(ORSTED) Orsted A/S	1.75	0.48	1.27
(WSTSTR) Westfield Stratford No 2	1.73	0.11	1.61
(CLEF) Channel Link	1.69	0.09	1.60
(SWSFIN) Southern Water Svcs Fin	1.55	0.55	1.01

Top long exposures are those bond issuers that reflect the largest percentage of the fund's total net assets. The effect of credit derivatives is included where the reference entity is a specific bond issuer. Government bond futures and index credit default swaps are excluded.

Where bonds are issued by different entities within the same corporate group/complex, the aggregated exposure may not be reflected in the data above.

## Top Overweights By Issuer

	Fund	Index	Relative
(UKT) United Kingdom of Great Britain	4.75	0.00	4.75
(TELSEC) Telereal Securitisation	2.12	0.17	1.95
(WSTSTR) Westfield Stratford No 2	1.73	0.11	1.61
(CLEF) Channel Link	1.69	0.09	1.60
(UPPBI) Upp Bond Issuer Plc	1.51	0.04	1.47
(MTROFN) Intu Metrocentre Finance	1.45	0.00	1.45
(HTHROW) Heathrow Funding Ltd	2.21	0.80	1.41
(NGGLN) Wstrn Pwr Distr West Mid	2.30	0.94	1.36
(DIGFIN) Dignity Finance Plc	1.35	0.00	1.35
(NBHA) Places For People Home	1.54	0.24	1.30

Top overweights and underweights are those bond issuers that have the largest active positions relative to the index holding. The effect of credit derivatives is included where the reference entity is a specific bond issuer. Government bond futures and index credit default swaps are excluded.

## Top Underweights By Issuer

	Fund	Index	Relative
(KFW) KfW	0.00	4.33	-4.33
(EIB) European Investment Bank	0.00	3.90	-3.90
(IBRD) World Bank Group/The	0.00	1.77	-1.77
(ASIA) Asian Development Bank	0.00	1.39	-1.39
(EDF) Electricite De France Sa	0.00	1.34	-1.34
(IADB) Korea Gas Corp	0.00	1.06	-1.06
(EOANGR) Innogy Finance Bv	0.00	0.91	-0.91
(GS) Goldman Sachs Group Inc	0.00	0.79	-0.79
(WFC) Wells Fargo & Company	0.00	0.74	-0.74
(LLOYDS) LLOYD BK GR 5.25/VAR 10/30 RGS	0.43	1.15	-0.71

## ESG Metrics

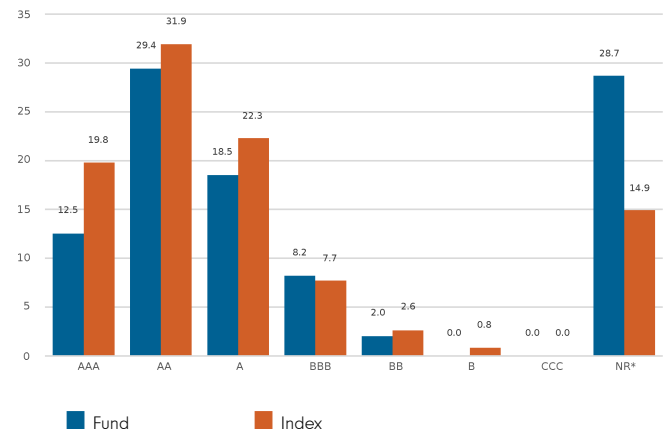
The factsheet is a snapshot of the portfolio at the date indicated above. ESG ratings distribution may vary over time. Representation of this data is for informational purposes only. If the SFDR classification is shown as 6 below then this fund does not promote environmental or social characteristics nor does it have a sustainable investment objective. If it is shown as 8, the fund promotes environmental or social characteristics. If it is shown as 9, the fund has a sustainable investment objective. Product-specific information can be found on our website at [www.fidelityinternational.com](http://www.fidelityinternational.com)

### Sustainability Characteristics (31.03.2024)

	Fund	Index
MSCI ESG Fund Rating (AAA-CCC)	AA	N/R
Weighted Average Carbon Intensity (tCo2e/\$M Revenue)	119.4	70.9
SFDR Classification	N/A	N/A

N/A - Not Applicable  
N/R - Not Rated

### MSCI Ratings Distribution % (31.03.2024)



ESG Fund rating based on holding as at 31.01.24 with 65.5% security coverage. Carbon intensity data based on holdings as at 31.03.24 with 62.2% security coverage.

## Glossary

**MSCI ESG Fund Rating:** This shows the fund's ESG rating based on the Quality Scores given to the fund by MSCI. This ranges from AAA, AA (Leader), A, BBB, BB (Average) to B, CCC (Laggard). To be included in MSCI ESG Fund Ratings, 65% of the fund's gross weight must come from covered securities (and excluding cash), the fund's holdings date must be less than one year old and the fund must have at least ten securities.

**Weighted Average Carbon Intensity:** is calculated as the sum of each portfolio weight multiplied by the Co2e per \$M of Revenue of each holding. This metric provides a snapshot of the fund's exposure to carbon-intensive companies and includes scope 1 and scope 2 carbon emissions. For carbon data, the coverage of underlying securities must be over 50% for data to be shown.

**SFDR Classification:** Shows the classification given to each fund as part of the EU Sustainable Finance Disclosure Regulation (SFDR). Article 9 funds aim to achieve an ESG outcome and are products with ESG objectives. Article 8 funds focus on promoting ESG characteristics and this must be a primary focus of the product. Article 6 funds integrate sustainability risks (unless specified otherwise in the prospectus) into investment analysis and decision-making, without the funds promoting environmental or social characteristics or having sustainable investments as their objective.

**MSCI Ratings Distribution:** This shows the percentage distribution of ESG ratings in the fund, based on the Net Asset Value of holdings excluding cash, liquidity funds, derivatives and Exchange Traded Funds.

## Disclaimer

ESG Rating Source: ©2024 MSCI ESG Research LLC. Reproduced by permission, no further distribution. MSCI ESG Research LLC and its affiliates (the "ESG Parties"), obtain information from sources they consider reliable, none of the ESG Parties warrants or guarantees the originality, accuracy and/or completeness of any data herein. None of the ESG Parties makes any express or implied warranties of any kind, and the ESG Parties hereby expressly disclaim all warranties of merchantability and fitness for a particular purpose, with respect to any data herein. None of the ESG Parties shall have any liability for any errors or omissions in connection with any data herein. Further, without limiting any of the foregoing, in no event shall any of the ESG Parties have any liability for any direct, indirect, special, punitive, consequential or any other damages (including lost profits) even if notified of the possibility of such damages. The information is as at the date of production based on data provided by MSCI. There may be timing differences between the date at which data is captured and reported. For more up to date information, you can visit <https://www.msci.com/esg-fund-ratings>

Carbon Data Source: Data provided by ISS ESG. All rights in the information provided by Institutional Shareholder Services Inc. and its affiliates (ISS) reside with ISS and/or its licensors. ISS makes no express or implied warranties of any kind and shall have no liability for any errors, omissions or interruptions in or in connection with any data provided by ISS. The information is as at the date of production based on carbon data provided by ISS. There may be timing differences between the date at which data is captured and reported.

SFDR Classification is assigned by Fidelity in line with the EU Sustainable Financial Disclosure Regulation.

## Glossary

### Volatility & Risk

**Annualised volatility:** a measure of how variable returns for a fund or comparative market index have been around their historical average (also known as “standard deviation”). Two funds may produce the same return over a period. The fund whose monthly returns have varied less will have a lower annualised volatility and will be considered to have achieved its returns with less risk. The calculation is the standard deviation of 36 monthly returns presented as an annualised number. Volatility for funds and indices are calculated independently of each other.

**Relative volatility:** a ratio calculated by comparing the annualised volatility of a fund to the annualised volatility of a comparative market index. A value greater than 1 indicates the fund has been more volatile than the index. A value less than 1 shows the fund has been less volatile than the index. A relative volatility of 1.2 means the fund has been 20% more volatile than the index, while a measure of 0.8 would mean the fund has been 20% less volatile than the index.

**Sharpe ratio:** a measure of a fund’s risk-adjusted performance, taking into account the return on a risk-free investment. The ratio allows an investor to assess whether the fund is generating adequate returns for the level of risk it is taking. The higher the ratio, the better the risk-adjusted performance has been. If the ratio is negative, the fund has returned less than the risk-free rate. The ratio is calculated by subtracting the risk-free return (such as cash) in the relevant currency from the fund’s return, then dividing the result by the fund’s volatility. It is calculated using annualised numbers.

**Annualised alpha:** the difference between a fund’s expected return (based on its beta) and the fund’s actual return. A fund with a positive alpha has delivered more return than would be expected given its beta.

**Beta:** a measure of a fund’s sensitivity to market movements (as represented by a market index). The beta of the market is 1.00 by definition. A beta of 1.10 shows that the fund could be expected to perform 10% better than the index in up markets and 10% worse in down markets, assuming all other factors remain constant. Conversely, a beta of 0.85 indicates that the fund could be expected to perform 15% worse than the market return during up markets and 15% better during down markets.

**Annualised tracking error:** a measure showing how closely a fund follows the index to which it is being compared. It is the standard deviation of the fund’s excess returns. The higher the fund’s tracking error, the higher the variability of fund returns around the market index.

**Information ratio:** a measure of a fund’s effectiveness in generating excess return for the level of risk taken. An information ratio of 0.5 shows the fund has delivered an annualised excess return equivalent to half the value of the tracking error. The ratio is calculated by taking the fund’s annualised excess return and dividing it by the fund’s tracking error.

**R<sup>2</sup>:** a measure representing the degree to which a fund’s return can be explained by the returns of a comparative market index. A value of 1 signifies the fund and index are perfectly correlated. A measure of 0.5 means only 50% of the fund’s performance can be explained by the index. If the R<sup>2</sup> is 0.5 or lower, the fund’s beta (and therefore its alpha too) is not a reliable measure (due to a low correlation between fund and index).

### Ongoing charges

The ongoing charges figure represents the charges taken from the fund over a year. It is calculated at the fund’s financial year end and may vary from year to year. For classes of funds with fixed ongoing charges, this may not vary from year to year. For new classes of funds or classes undergoing corporate actions (eg amendment to annual management charge), the ongoing charges figure is estimated until the criteria are met for an actual ongoing charges figure to be published.

The types of charges included in the ongoing charges figure are management fees, administration fees, custodian and depositary fees and transaction charges, shareholder reporting costs, regulatory registration fees, Directors fees (where applicable) and bank charges.

It excludes: performance fees (where applicable); portfolio transaction costs, except in the case of an entry/exit charge paid by the fund when buying or selling units in another collective investment undertaking.

For more information about charges (including details of the fund’s financial year end), please consult the charges section in the most recent Prospectus.

### Independent Assessment

**Primary share class:** is identified by Morningstar when the analysis calls for only one share class per fund to be in the peer group. It is the share class Morningstar recommends as the best proxy for the portfolio for the relevant market and category/GIF combination. In most cases the share class chosen will be the most retail version (based upon actual management charge, inception date, distribution status, currency and other factors) unless a share class that is less retailed focused has a much longer track record. It is different to the oldest share class data point in that it is on an available for sale level and not all markets will have the oldest share class for sale in that region. The Primary share class is also based on category so each available for sale/category combination for the fund will have its own primary share class.



## Glossary

### Portfolio Characteristics

#### Distribution Yield (%)

The Distribution Yield reflects the amounts that may be expected to be distributed over the next twelve months as a percentage of the mid-market unit price of the fund as at the date shown and is based on a snapshot of the portfolio on that day. It includes the fund's ongoing charges but does not include any preliminary charge and investors may be subject to tax on distributions.

#### Effective Duration

Duration is a measure of sensitivity of the fund value to changes in interest rates.

Effective duration is a duration calculation for bonds with embedded options (such as a call or a put option). It takes into account that expected cash flows will fluctuate as interest rates change and affect a bond's price.

The effective duration of a fund is calculated by a market weighted sum of the effective duration of each individual instrument. The effect of derivatives such as bond futures and interest rate swaps are included in the calculation.

#### Running Yield (%)

Describes the income investors get from their portfolio as a percentage of market value of the securities, incorporating the effect of derivatives. It should not be relied on as a measure of expected fund return (or distribution). Bonds with high probability of default are excluded from the calculation. The running yield does not reflect the total return over the life of the bond and takes no account of reinvestment risk (the uncertainty about the rate at which future cash flows can be reinvested) or the fact that bonds usually mature at par value, which can be an important component of a bond's return. The running yield does not include the impact of fees.

#### Yield to Maturity (%)

The Yield to Maturity (also known as the Redemption Yield) is the aggregate of all anticipated returns on each individual bond within the portfolio expressed as an annual rate based on market value as at date shown, coupon rate and time to maturity of each bond. It is based on a snapshot of the portfolio on that date. The redemption yield is gross of the fund's charges and gross of tax.

#### Average Maturity (Years)

The market-weighted average maturity of bonds held in the portfolio. Perpetual bonds are assigned a maturity of 31 December 2049. Derivatives are excluded from the calculation.

#### Average Coupon (%)

The coupon is the interest rate stated on a bond when it is issued. Average Coupon is the weighted average coupon of bonds held in the portfolio. Derivatives are excluded from the calculation.

#### Spread Duration

The sensitivity of the price of a bond to a change in its Option Adjusted Spread.

#### Option Adjusted Spread (Basis Points)

Option Adjusted Spread (OAS) measures the yield spread that is not directly attributable to the bond's characteristics. OAS is a measurement tool for evaluating price differences between similar bonds with different embedded options. A larger OAS implies a greater return for greater risks.

#### Duration Times Spread (DTS)

DTS is a measure of credit risk sensitivity that utilises credit spread and credit spread duration based on current market valuations. It is superior to spread duration as a standalone measure of credit risk because it recognises that securities with a higher spread tend to experience greater spread changes. The portfolio's DTS is the value weighted sum of the DTS of each individual instrument.

#### Number of Holdings

The number of bonds and derivatives held in the fund. Where the fund invests in another fund, it is counted as one holding. FX (foreign exchange) forwards are excluded. These are forward contracts that allow currency to be bought or sold at an agreed price on a future date.

#### Number of Names

The total number of individual issuers whose bonds are held in the fund. Since the fund will often hold more than one bond from an issuer, this figure is generally lower than the number of holdings.

#### Average Credit Rating

This is the weighted average of all the bond credit ratings in the fund, expressed using the industry standard letter system (ie AAA, BBB). It takes into account all investments in the fund, including derivatives. This measure gives an idea of how risky the fund's bonds are overall: the lower the average credit rating, the riskier the fund.

With a Linear weighted average, the weight assigned to each issue is equal to its market value weight. With an Exponential weighted average, the weight gets proportionally higher for lower-quality credit. In both calculations, the final value is the S&P-equivalent rating nearest to the calculated average.

**Primary share class:** is identified by Morningstar when the analysis calls for only one share class per fund to be in the peer group. It is the share class Morningstar recommends as the best proxy for the portfolio for the relevant market and category/GIF combination. In most cases the share class chosen will be the most retail version (based upon actual management charge, inception date, distribution status, currency and other factors) unless a share class that is less retailed focused has a much longer track record. It is different to the oldest share class data point in that it is on an available for sale level and not all markets will have the oldest share class for sale in that region. The Primary share class is also based on category so each available for sale/category combination for the fund will have its own primary share class

**Weighted Average Life:** The weighted average life (WAL) is the average length of time that each euro of unpaid principal on a loan, a mortgage or an amortizing bond remains outstanding.

**Discount Margin:** A discount margin (DM) is the average expected return earned in addition to the index underlying, or reference rate of, the floating rate security.

**Portfolio Turnover Rate (PTR) and Portfolio Turnover Cost (PTC), where shown:** SRDII does not define a methodology for these values; ours is as follows: **PTR** = (purchases of securities + sales of securities) minus (subscriptions of units + redemptions of units), divided by average fund value over the prior 12 months multiplied by 100. Any funds' trading in Fidelity Institutional Liquidity Funds is excluded from the PTR calculation. **PTC** = PTR (capped at 100%) x transaction cost, where transaction cost is calculated as ex-post (i.e. prior 12 months) MiFID disclosure of portfolio transaction costs minus implicit costs.

**Important Information**

This is a marketing communication. This information must not be reproduced or circulated without prior permission.

Fidelity only offers information on products and services and does not provide investment advice based on individual circumstances, other than when specifically stipulated by an appropriately authorised firm, in a formal communication with the client.

Fidelity International refers to the group of companies which form the global investment management organisation that provides information on products and services in designated jurisdictions outside of North America. This communication is not directed at, and must not be acted upon by persons inside the United States and is otherwise only directed at persons residing in jurisdictions where the relevant funds are authorised for distribution or where no such authorisation is required.

Unless otherwise stated all products and services are provided by Fidelity International, and all views expressed are those of Fidelity International. Fidelity, Fidelity International, the Fidelity International logo and F symbol are registered trademarks of FIL Limited.

FIL Limited assets and resources as at 28/02/2023 - data is unaudited. Research professionals include both analysts and associates. Fidelity Investment Funds, Fidelity Investment Funds 2, Fidelity Investment Funds III, Fidelity Investment Funds IV, Fidelity Investment Funds VIII and Fidelity Investment Funds IX are open-ended investment companies (OEICs) with variable capital, incorporated in England and Wales, being authorised and regulated by the Financial Conduct Authority. The Authorised Corporate Director of these OEICs is FIL Investment Services (UK) Limited.

Data Source - © 2024 Morningstar, Inc. All Rights Reserved. The information contained herein:

- (1) is proprietary to Morningstar and/or its content providers;
- (2) may not be copied or distributed; and
- (3) is not warranted to be accurate, complete or timely. Neither Morningstar nor its content providers are responsible for any damages or losses arising from any use of this information.

This share class is registered and distributed in the following locations: United Kingdom.

**United Kingdom** : Investments should be made on the basis of the KIID (key investor information document) which is available at [www.fidelity.co.uk](http://www.fidelity.co.uk) The full prospectus may also be obtained from Fidelity. Issued by FIL Investment Services (UK) Limited, a firm authorised and regulated in the UK by the Financial Conduct Authority. This document may be provided to you by a distributor, including a Fidelity International distributor such as FIL Pensions Management or Financial Administration Services Limited, both of which are authorised and regulated by the Financial Conduct Authority.

CSO3463/na GB\_English 52691 T101a