

# Liontrust Global Dividend Fund

This document provides you with key investor information about this Fund. It is not marketing material. The information is required by law to help you understand the nature and the risks of investing in this Fund. You are advised to read it so you can make an informed decision about whether to invest.

Liontrust Global Dividend Fund is a sub-fund of the Liontrust Investment Funds I and categorised as a UCITS scheme. This document is based upon the C Inc GBP (ISIN: GB00B91RFZ23). This Fund is managed by Liontrust Fund Partners LLP, a subsidiary of Liontrust Asset Management PLC.

## Objective and Investment Policy

- To generate income with the potential for long term (5 years or more) capital growth.
- Income Target - The Fund aims to deliver a net target yield of at least the net yield of the MSCI World Index each year. The level of income is not guaranteed.
- The Fund considers environmental or social characteristics, but does not have a sustainable investment objective.
- The Fund invests at least 80% in global equities. The Fund may also invest up to 20% in other eligible asset classes as detailed within the prospectus.
- The Fund is considered to be actively managed in reference to the benchmark(s) in the performance table by virtue of the fact that it uses the benchmark(s) for performance comparison purposes. The benchmark(s) are not used to define the portfolio composition of the Fund and the Fund may be wholly invested in securities which are not constituents of the benchmark.
- The Fund may not be appropriate for investors who plan to withdraw their money within 5 years.
- The charges you pay are used to pay the costs of running the Fund, including the costs of marketing and distributing it. These charges reduce the potential growth of your investment.
- You may buy or sell units on a daily basis (but not weekends or Bank Holidays). Orders must be received by 11:59am for execution at 12:00 midday valuation point on the same day.
- Income share classes allow investors to receive a distribution or reinvest dividend income.
- The Fund may, under certain circumstances, invest in derivatives but it is not intended that their use will materially affect volatility. Derivatives are used to protect against currencies, credit and interest rate moves or for

investment purposes. The use of derivatives may create leverage or gearing resulting in potentially greater volatility or fluctuations in the net asset value of the Fund. A relatively small movement in the value of a derivative's underlying investment may have a larger impact, positive or negative, on the value of a fund than if the underlying investment was held instead.

- The team seeks to generate strong returns by investing in innovative companies.
- The team sets their investible universe to only those companies that are listed, liquid (with a market capitalisation above \$1 billion at the time of purchase) and have the resources to innovate (based on metrics of financial strength).
- The team manages the Global Innovation 200 watchlist, an ever-evolving list of the most innovative companies around the world across all sectors and regions. Every company that makes it onto the list has four attributes:
  - Innovation: Creates genuine value for customers by driving down prices or providing more for its customers' money.
  - Barrier: Has strong barriers to competition to capture value for shareholders.
  - Management: Has good management with the right incentives and ability to execute.
  - Cash returns on capital: Can convert its investments in innovation into cash.
- The team identifies the price they are willing to pay for a company using a 10-year DCF model. Their hurdle to invest is an anticipated 15% annual compound return. As part of valuation the team conducts a risk assessment, covering financial, disruptive innovation and ESG factors

## Risk and Reward Profile



- This Synthetic Risk and Reward Indicator (SRRRI) is based on historical data and may not be relied upon to gauge the future risk profile of the Fund.
- The SRRRI shown is not guaranteed to remain the same and may shift over time.
- The lowest category (1) does not mean 'risk free'.
- The Fund is categorised 6 primarily for its exposure to Global equities.
- The Fund's risk and reward category has been calculated using the methodology approved by the Financial Conduct Authority. It is based upon the rate by which the Fund or a representative fund or index's value has moved up and down in the past.
- For full details of the Fund's risks, please see the prospectus which may be obtained from Liontrust (address below) or online at [www.liontrust.com](http://www.liontrust.com).
- The SRRRI may not fully take into account the following risks:
  - that a company may fail thus reducing its value within the Fund;
  - overseas investments may carry a higher currency risk. They are valued by reference to their local currency which may move up or down when compared to the currency of the Fund.

- **Credit Counterparty Risk:** outside of normal conditions, the Fund may hold higher levels of cash which may be deposited with several credit counterparties (e.g. international banks). A credit risk arises should one or more of these counterparties be unable to return the deposited cash.
- **Concentration Risk:** the Fund may have a concentrated portfolio, i.e. hold a limited number of investments (35 or fewer) or have significant sector or factor exposures. If one of these investments or sectors / factors fall in value this can have a greater impact on the Fund's value than if it held a larger number of investments across a more diversified portfolio.
- **Liquidity Risk:** the Fund may encounter liquidity constraints from time to time. The spread between the price you buy and sell shares will reflect the less liquid nature of the underlying holdings.
- **Style Risk:** the Fund's investment approach follows a specific style. This means the Fund may perform differently from the broader market or other funds that adopt a different style. For example, growth stocks often trade at higher valuations and can be more sensitive to changes in interest rates or market sentiment, which may lead to greater volatility. Conversely, value stocks may underperform during periods when growth investing is favoured. Although quality companies with strong balance sheets, stable earnings, and robust governance practice may reduce certain risks, they can underperform in markets that favour higher-risk or cyclical investments. If the chosen style is out of favour, the Fund's performance may be adversely affected regardless of overall market conditions.
- **ESG Risk:** there may be limitations to the availability, completeness or accuracy of ESG information from third-party providers, or inconsistencies in the consideration of ESG factors across different third party data providers, given the evolving nature of ESG.

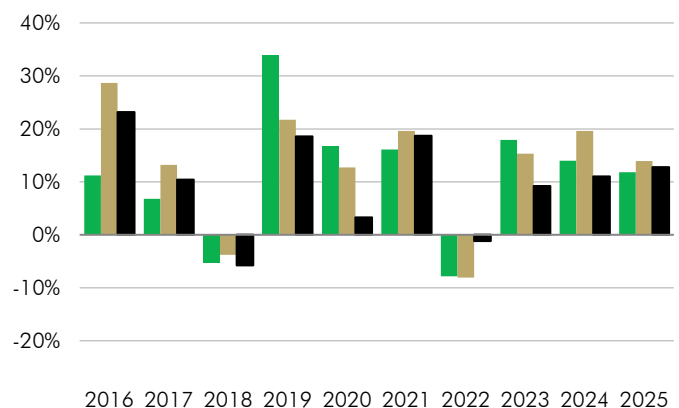
## Charges

One-off charges taken before or after you invest	
Entry Charge	None
Exit Charge	None
This is the maximum that might be taken out of your money before it is invested.	
Charges taken from the Fund over the year	
Ongoing Charges	0.87%
Charges taken from the Fund under certain specific circumstances	
Performance Fee	None

- The charges you pay are used to pay the costs of running the Fund, including the costs of marketing and distributing it. They reduce the potential growth of your investment.
- The entry and exit charges shown are maximum figures. In some cases you might pay less – you can find this out from your financial adviser or fund platform if you are not using a financial adviser.
- The ongoing charges figure is based on expenses as at 31 December 2025. This figure may vary from year to year. It excludes:
  - portfolio transaction costs, except in the case of an entry/exit charge paid by the UCITS when buying or selling units/shares in another collective investment undertaking.
- For more information about charges and what is included in each charge, please see the Fund's prospectus, which is available electronically at [www.liontrust.com](http://www.liontrust.com), or visit the costs and charges page on our website at [www.liontrust.com/costs-and-charges](http://www.liontrust.com/costs-and-charges).

## Past Performance

- Past performance does not predict future returns.
- It has been calculated on the basis that any distributable income of the Fund has been reinvested. The past performance shown in the chart takes into account all charges except entry and exit charges.
- The Fund launch date is 20 December 2012.
- The C Inc GBP launch date is 20 December 2012.
- The base currency of the Fund is GBP.
- Please note from 1 December 2025 the following change. With effect from fund inception, the benchmark data of the Fund has changed to the MSCI All Country World Index. The income benchmark will remain as MSCI World.



	2016	2017	2018	2019	2020	2021	2022	2023	2024	2025
■ Liontrust Global Dividend Fund C Inc GBP	11.2%	6.8%	-5.2%	33.9%	16.7%	16.1%	-7.8%	17.9%	14.0%	11.8%
■ MSCI All Country World Index	28.7%	13.2%	-3.8%	21.7%	12.7%	19.6%	-8.1%	15.3%	19.6%	13.9%
■ IA Global Equity Income	23.2%	10.4%	-5.8%	18.6%	3.3%	18.7%	-1.2%	9.2%	11.0%	12.8%

## Practical Information

**Authorisation:** This Fund is authorised in the UK and regulated by the Financial Conduct Authority.

**Depositary:** Bank of New York Mellon (International) Ltd.

**Investment adviser:** Liontrust Investment Partners LLP.

**Further information:** Copies of the prospectus and the latest annual and half-yearly reports, which are the primary source of additional information, are available, without charge, from Liontrust Fund Partners LLP, 2 Savoy Court, London, WC2R 0EZ. They are also available electronically at [www.liontrust.com](http://www.liontrust.com).

**Taxation:** UK tax legislation may have an impact upon your own personal tax position.

**Fund prices and other information:** The Fund's last published price is available from Liontrust Fund Partners LLP at [www.liontrust.com](http://www.liontrust.com) or by writing to us at 2 Savoy Court, London, WC2R 0EZ, or by telephoning 020 7412 1777 during business hours (9.00am - 5.30pm).

**Remuneration:** Information on the current remuneration policy of the Fund, including a description of how remuneration and benefits are calculated and the identity of persons responsible for awarding the remuneration and benefits, is available at [www.liontrust.com](http://www.liontrust.com). A paper copy of this information is available free of charge upon request from Liontrust Fund Partners LLP at 2 Savoy Court, London, WC2R 0EZ.