

Key Investor Information

This document provides you with key investor information about this fund. It is not marketing material. The information is required by law to help you understand the nature and the risks of investing in this fund. You are advised to read it so you can make an informed decision about whether to invest.



Smith & Williamson UK Equity Income Fund Class A Income Units [ISIN: GB0008178799]

The Authorised Fund Manager of the Fund is Smith & Williamson Fund Administration Limited, part of the Smith & Williamson group.

Objectives and investment policy

The Fund aims to provide a high level of income that grows over time by investing primarily in shares of companies traded in the UK. The Investment Manager will look to choose companies which offer an attractive level of dividend yield but which at the same time are reasonably expected to increase their dividends.

The Fund may make other investments, including:

- cash, deposits and money market instruments,
- other investment funds,
- warrants,
- bonds issued by governments and other organisations.

The Fund may use derivatives for Efficient Portfolio Management (EPM), i.e. to protect against market or currency movements, to reduce costs, or to earn income or capital.

The Investment Manager will use fixed interest securities in both the UK and other world markets when it is not possible to achieve high returns on equities. The Investment Manager will invest in other world markets when the returns look better than those obtainable in the UK . The Investment Manager may also invest in new issues.

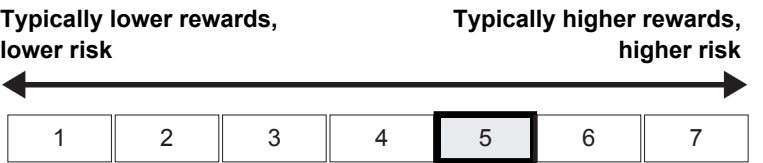
Any income the Fund generates will be paid out to you.

You can buy and sell units on any working day in London.

For full investment objectives and policy details please refer to the Prospectus.

Risk and reward profile

The Risk and Reward Indicator table demonstrates where the Fund ranks in terms of its potential risk and reward. The higher the rank the greater the potential reward but the greater the risk of losing money. It is based on past data, may change over time and may not be a reliable indication of the future risk profile of the Fund. The shaded area in the table below shows the Fund's ranking on the Risk and Reward Indicator.



- The Fund is in a higher category because the price of its investments have risen or fallen frequently and more dramatically than some other types of investment. The category shown is not guaranteed to remain unchanged and may shift over time. Even the lowest category does not mean a risk-free investment.
- The price of the Fund and any income from it can go down as well as up and is not guaranteed. Investors may not get back the amount invested. Past performance is not a guide to future performance.
- Where investments are made in smaller company shares, these may be riskier as they can be more difficult to buy and sell. Their share prices may also move up and down more than larger companies.
- The Fund is entitled to use derivative instruments for EPM. Derivatives may not achieve their intended purpose. Their prices may move up or down significantly over relatively short periods of time which may result in losses greater than the amount paid. This could adversely impact the value of the Fund.
- The organisation from which the Fund buys a derivative may fail to carry out its obligations, which could also cause losses to the Fund.
- The price of gold or other resources may be subject to sudden, unexpected and substantial fluctuations. This may lead to significant declines in the values of any companies developing these resources in which the Fund invests and significantly impact investment performance.
- The Fund may hold a limited number of investments. If one of these investments falls in value this can have a greater impact on the Fund's value than if it held a larger number of investments.
- For full details on risk factors for this Fund, please refer to the Prospectus.

Charges

The charges you pay are used to pay the costs of running the Fund, including the costs of marketing and distributing it. These charges reduce the potential growth of your investment.

One-off charges taken before or after you invest

| | |
|--------------|-------|
| Entry charge | 5.00% |
| Exit charge | 0.00% |

These are the maximum charges that we might take out of your money before it is invested and before we pay out the sale proceeds of your investment. In some cases, you might pay less and you should speak to your financial adviser about this.

Charges taken from the Fund over a year

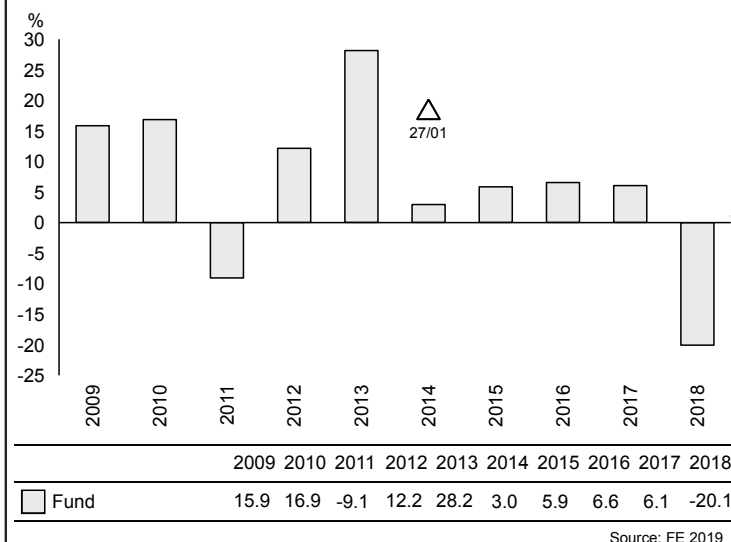
| | |
|-----------------|-------|
| Ongoing charges | 1.57% |
|-----------------|-------|

Charges taken from the Fund under specific conditions

| | |
|-----------------|------|
| Performance fee | NONE |
|-----------------|------|

- The ongoing charges figure is based on the last year's expenses and may vary from year to year. It excludes the costs of buying or selling assets for the Fund (unless these assets are shares of another fund).
- A dilution levy may be charged on a purchase or sale of units in the Fund in some cases. It may be necessary to reduce the difference between the cost of buying or selling the Fund's investments and the Fund's mid-market unit price. Any dilution levy charged will be paid into the Fund.
- For further information about charges, please refer to relevant sections in the Fund's Prospectus.
- The ongoing charges figure is for the year ending 31/08/2018.
- The Fund's annual report for each financial year will include detail on the exact charges made.

Past performance



- You should be aware that past performance is not a guide to future performance.
- Fund launch date: 07/05/1987.
- Share/unit class launch date: 07/05/1987.
- Performance is calculated in GBP.
- Δ Before this date the Fund had different characteristics.
- The Fund's investment objective and investment policy changed on 27/01/2014 and the performance before this date was achieved using an objective and investment policy that no longer applies.
- All charges and fees, except any entry, exit or switching charges, have been included within the performance calculation.

Practical information

- The Trustee of the Fund is NatWest Trustee & Depositary Services Limited.
- You can get further information on the Fund, including how to buy and sell units, from the Prospectus and the latest annual and half-yearly reports and accounts, which are in English only. You can get copies of these free of charge, by telephoning 0141 222 1151.
- The latest unit prices are available on www.fundlistings.com or by telephoning 0141 222 1151.
- UK tax laws may impact your own tax position.
- Smith & Williamson Fund Administration Limited may be held liable solely on the basis of any statement contained in this document that is misleading, inaccurate or inconsistent with the relevant parts of the Prospectus for the UCITS.
- There are other unit classes available in this Fund. You can convert between unit classes and switch to another fund by writing to Transfer Agency, 206 St Vincent Street, Glasgow G2 5SG.
- Details of the Smith & Williamson Fund Administration Limited remuneration policy are available on <http://smithandwilliamson.com/footer-pages/remuneration-code-disclosure> and a copy will be made available free of charge on request.