

TBFS

TB Wise Multi-Asset Growth, a sub-fund of the TB Wise Funds A Accumulation, ISIN: GB0034272426
The Authorised Corporate Director of this Fund is: T. Bailey Fund Services Limited.



Charges

The charges you pay are used to pay the costs of running the Fund, including the costs of marketing and distributing it. These charges reduce the potential growth of your investment.

One-off charges taken before or after you invest

Entry charge	0.00%
Exit charge	0.00%

These are the maximum charges that we might take out of your money before it is invested and before we pay out the sale proceeds of your investment. In some cases, you might pay less and you should speak to your financial adviser about this.

Charges taken from the Fund over a year

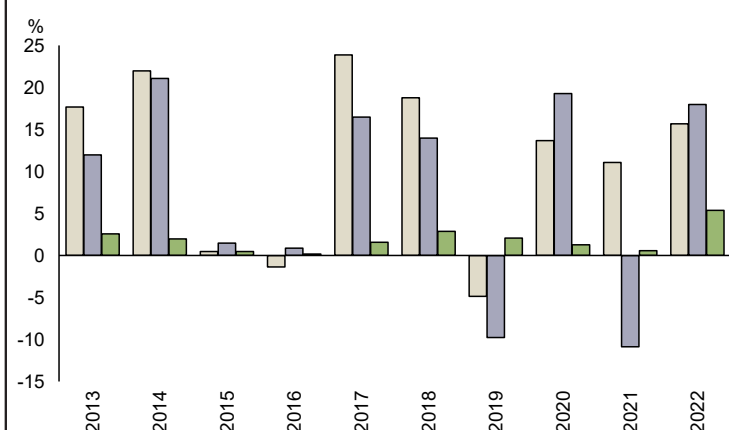
Ongoing charges	2.57%
-----------------	-------

Charges taken from the Fund under specific conditions

Performance fee	No
-----------------	----

- The ongoing charges figure is based on the expenses incurred by the Fund for the year ended 31 August 2022.
- The figure may vary from year to year. The figure includes the weighted average ongoing charges figure of the funds invested in. It excludes payments related to interest on borrowing and portfolio transaction costs, except in the case of transaction fees payable to the custodian and any entry/ exit charge paid when buying or selling units in another fund.
- For details of the actual charges, please contact your financial adviser/distributor.

Past performance



	2013	2014	2015	2016	2017	2018	2019	2020	2021	2022
Fund	17.7	22.0	0.5	-1.4	23.9	18.8	-4.9	13.7	11.1	15.7
Benchmark 1*	12.0	21.1	1.5	0.9	16.5	14.0	-9.8	19.3	-10.9	18.0
Benchmark 2*	2.6	2.0	0.5	0.2	1.6	2.9	2.1	1.3	0.6	5.4

Source: FE fundinfo 2023

- You should be aware that past performance is not a guide to future performance.
- Fund launch date: 31/03/2004.
- Share/unit class launch date: 31/03/2004.
- Performance is calculated in GBP.
- Performance is shown inclusive of all charges, except entry charges.
- Performance is shown on a total return basis (on the basis that distributable income has been reinvested).
- * Benchmark 1 - Cboe UK All Companies
- * Benchmark 2 - UK Consumer Price Index

Practical information

- Further information about the Fund including the Prospectus, Supplementary Information document, latest annual and half-yearly reports is available free of charge at www.tbaileyfs.co.uk. All documents are available in English only.
- This Key Investor Information is prepared for TB Wise Multi-Asset Growth, a compartment of the TB Wise Funds, a UCITS. The Prospectus and periodic reports referred to above are prepared for the entire UCITS.
- Each compartment is a segregated portfolio of assets and those assets can only be used to meet the liabilities of, or claims against, that compartment.
- Latest prices are published at www.tbaileyfs.co.uk.
- The Fund's home Member State is the UK and this may have an impact on the personal tax position of the investor. Please seek professional advice from your Financial Adviser if you are unsure.
- The depositary of the Fund is NatWest Trustee and Depositary Services Limited.
- T. Bailey Fund Services Limited may be held liable solely on the basis of any statement contained in this document that is misleading, inaccurate or inconsistent with the relevant parts of the Prospectus for the Fund.
- Details of the up to date remuneration policy which includes a description of how remuneration and benefits are calculated and the identities of the persons responsible for awarding remuneration and benefits, are available at www.tbaileyfs.co.uk and a paper copy will be available free of charge upon request.
- Another share class is available in this fund (B Accumulation) please see separate Key Investor Information document for details. Investors have the right to request a switch to the other share class of this fund or to another fund in the TB Wise Funds – see Prospectus for more details.
- The Fund is authorised in the UK and is regulated by the Financial Conduct Authority.
- T. Bailey Fund Services Limited is authorised in the UK and is regulated by the Financial Conduct Authority.