

# Key Investor Information

This document provides you with key investor information about this fund. It is not marketing material. The information is required by law to help you understand the nature and the risks of investing in this fund. You are advised to read it so you can make an informed decision about whether to invest.

## SVS Brooks Macdonald Blueprint Defensive Income Fund Class B Accumulation Shares [ISIN: GB00BVCX4H81] Income Shares [ISIN: GB00B054QN16]

The Fund is a sub-fund of SVS Brooks Macdonald Fund.  
The Authorised Corporate Director of the Fund is Evelyn Partners Fund Solutions Limited trading as St Vincent St Fund Administration, part of the Evelyn Partners group.

### Objectives and investment policy

The aim of the Fund is to provide income over the long term (at least five years) while maintaining capital, by investing at least 70% in a range of open and closed-ended funds to obtain an exposure to a mix of fixed income securities and shares.

The allocation between the fixed income securities and shares in which the Fund invests will vary in response to short term market conditions. However, the allocation to shares will remain within a 0% - 35% range, in line with the investment manager's strategy to invest in a defensive range of income generating assets.

The underlying equity component of the Fund may include equities of companies from anywhere in the world, in any sector and of any market capitalisation.

The underlying fixed income component may include government and corporate bonds issued anywhere in the world. These may be investment grade, sub-investment grade or unrated.

- The Fund may also invest in:
- transferable securities (including exchange traded funds, REITs and structured products)
  - other collective investment schemes (which may include schemes managed by the manager or an affiliate of the manager)
  - cash and near cash, deposits and money market instruments

The Fund may also gain exposure, via collective investment schemes, to alternative asset classes, such as commodities, hedge fund strategies, infrastructure, property and convertibles.

The Fund may use derivatives, including exchange traded and over the counter derivatives, forward transactions and currency hedges for efficient portfolio management.

Income shares: Any income the Fund generates will be paid out to you.

Accumulation shares: Any income the Fund generates will be reinvested.

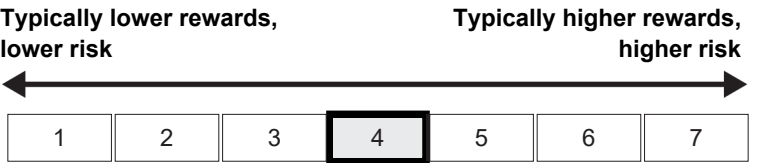
You can buy and sell shares on any working day in London.

The Fund is actively managed, which means that the manager has discretion over the composition of its portfolio, and the Fund is not tracking a benchmark nor is the Fund constrained by the value, price or components of a benchmark or any other aspect. The Fund is also not aiming to match or exceed the return of any benchmark.

For full investment objectives and policy details please refer to the prospectus.

### Risk and reward profile

The Risk and Reward Indicator table demonstrates where the Fund ranks in terms of its potential risk and reward. The higher the rank the greater the potential reward but the greater the risk of losing money. It is based on past data, may change over time and may not be a reliable indication of the future risk profile of the Fund. The shaded area in the table below shows the Fund's ranking on the Risk and Reward Indicator.



- The Fund is in a medium category because the price of its investments have risen or fallen to some extent. The category shown is not guaranteed to remain unchanged and may shift over time. Even the lowest category does not mean a risk-free investment.
- The price of the Fund and any income from it can go down as well as up and is not guaranteed. Investors may not get back the amount invested. Past performance is not a guide to future performance.
- Where the Fund invests in bonds, there is a risk the bond issuer may fail to meet its repayments. This is usually a greater risk for bonds that produce a higher level of income. Changes in interest rates, inflation and the creditworthiness of the bond issuer may also affect the bond's market value.
- Where the Fund invests into other investment funds, they may invest in different assets, countries or economic sectors and therefore have different risk profiles not in line with those of the Fund.
- Investment trusts and closed ended funds may borrow to purchase additional investments. This can increase returns when stock markets rise but will magnify losses when markets fall.
- The value of an investment trust or a closed-ended fund moves in line with stock market demand and its share price may be less than or more than the net value of the investments it holds.
- The Fund is entitled to use derivative instruments for EPM. Derivatives may not achieve their intended purpose. Their prices may move up or down significantly over relatively short periods of time which may result in losses greater than the amount paid. This could adversely impact the value of the Fund.
- The organisation from which the Fund buys a derivative may fail to carry out its obligations, which could also cause losses to the Fund.
- The Fund may invest in securities not denominated in sterling, the value of your investments may be affected by changes in currency exchange rates.
- For full details on risk factors for this Fund, please refer to the prospectus.

## Charges

The charges you pay are used to pay the costs of running the Fund, including the costs of marketing and distributing it. These charges reduce the potential growth of your investment.

One-off charges taken before or after you invest	
Entry charge	0.00%
Exit charge	0.00%

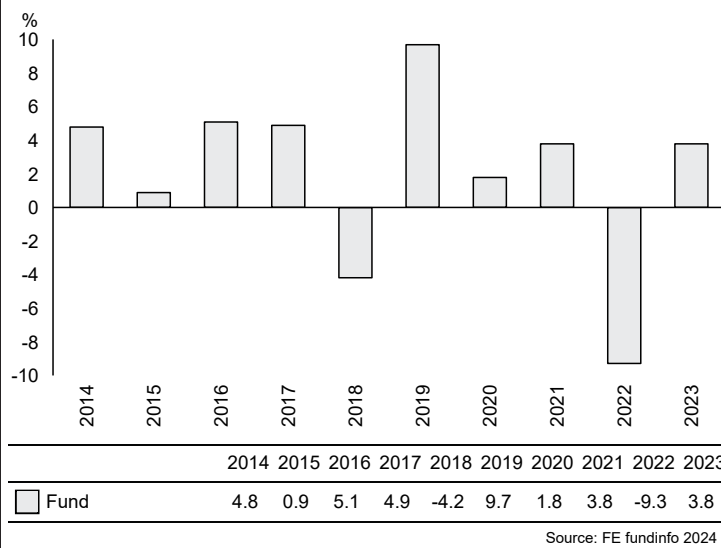
These are the maximum charges that we might take out of your money before it is invested and before we pay out the sale proceeds of your investment. In some cases, you might pay less and you should speak to your financial adviser about this.

Charges taken from the Fund over a year	
Ongoing charges	1.71%

Charges taken from the Fund under specific conditions	
Performance fee	NONE

- The ongoing charges figure is based on the last year's expenses and may vary from year to year. It excludes the costs of buying or selling assets for the Fund (unless these assets are shares of another fund).
- Previously, the Ongoing Charges Figure (OCF) included expenses incurred by a Fund on any investments in collective investment schemes and closed ended vehicles such as investment trusts (the synthetic OCF). Following guidance issued by the Investment Association on 30 November 2023, any synthetic OCF now excludes the expenses of closed ended vehicles.
- A dilution levy may be charged on a purchase or sale of shares in the Fund in some cases. It may be necessary to reduce the difference between the cost of buying or selling the Fund's investments and the Fund's mid-market share price. Any dilution levy charged will be paid into the Fund.
- The Fund's annual report for each financial year will include detail on the exact charges made.
- The ongoing charges figure is for the year ending 31/05/2023.
- For further information about charges, please refer to relevant sections in the Fund's prospectus.

## Past performance



- You should be aware that past performance is not a guide to future performance.
- Fund launch date: 20/12/2004.
- Share/unit class launch date: 20/12/2004.
- Performance is calculated in GBP.
- On 18/12/2021 the name of the Fund changed from Defensive Income Fund (a sub-fund of IFSL Brooks Macdonald Fund) to SVS Brooks Macdonald Blueprint Defensive Income Fund.
- All charges and fees, except any entry, exit or switching charges, have been included within the performance calculation.

## Practical information

- The Depositary of the Fund is NatWest Trustee & Depositary Services Limited.
- You can get further information on the Fund, including how to buy and sell shares, from the prospectus and the latest annual and half-yearly reports and accounts, which are in English only. You can get copies of these free of charge, by telephoning 0141 222 1151.
- The latest share prices are available on [www.trustnet.com](http://www.trustnet.com) or by telephoning 0141 222 1151.
- UK tax laws may impact your own tax position.
- Evelyn Partners Fund Solutions Limited may be held liable solely on the basis of any statement contained in this document that is misleading, inaccurate or inconsistent with the relevant parts of the prospectus for the UK UCITS.
- The Fund is a sub-fund of a UK UCITS umbrella company. The prospectus and long report are prepared for the entire entity. The liabilities of each sub-fund are segregated by UK law and the Fund should not be liable for any debts that cannot be paid by another sub-fund.
- There are other funds available in the umbrella. You can convert between share classes and switch to a different fund by writing to Transfer Agency, 177 Bothwell Street, Glasgow, G2 7ER.
- Details of the Evelyn Partners Fund Solutions Limited remuneration policy are available on <https://www.evelyn.com/regulatory/remuneration-code-disclosure> and a copy will be made available free of charge on request.