

Charges

The charges you pay are used to pay the costs of running the Fund, including the costs of marketing and distributing it. These charges reduce the potential growth of your investment.

One-off charges taken before or after you invest

Entry charge	5.00%
Exit charge	0.00%

These are the maximum charges that we might take out of your money before it is invested and before we pay out the sale proceeds of your investment. In some cases, you might pay less and you should speak to your financial adviser about this.

Charges taken from the Fund over a year

Ongoing charges	1.81%
-----------------	-------

Charges taken from the Fund under specific conditions

Performance fee	NONE
-----------------	------

Switching charge (for switching into the Fund from another fund) 0.00%.

The ongoing charges figure is based on the last year's expenses and may vary from year to year. It excludes the costs of buying or selling assets for the Fund (unless these assets are shares of another fund).

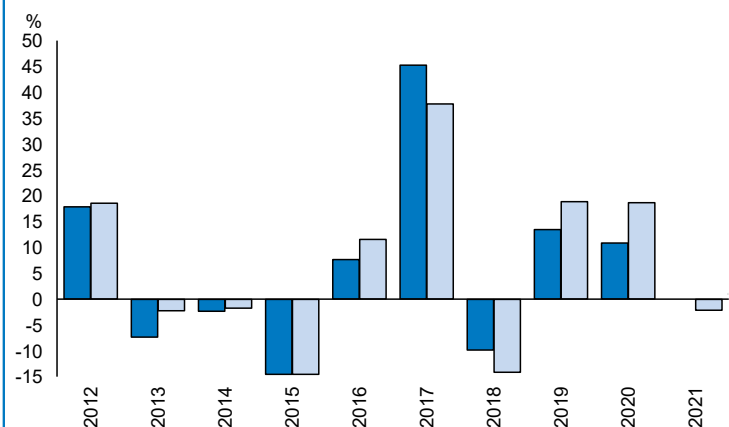
The ongoing charges figure is based on expenses for the year ending December 2021. This figure may vary from year to year.

It excludes:

- Performance fees
- Portfolio transaction costs, except in the case of an entry/exit charge paid by the UCITS when buying or selling units in another collective investment undertaking.

For more information about charges, please see the section entitled Fees and Expenses in the Fund's prospectus, which is available at www.bmogam.com.

Past performance



	2012	2013	2014	2015	2016	2017	2018	2019	2020	2021
Fund	17.9	-7.4	-2.4	-14.6	7.7	45.3	-9.9	13.5	10.9	0.0
Index*	18.6	-2.3	-1.8	-14.6	11.6	37.8	-14.2	18.9	18.7	-2.2

Source: FE fundinfo 2022

You should be aware that past performance is not a guide to future performance.

Fund launch date: 01/07/1994.

Share/unit class launch date: 01/07/1994.

Performance is calculated in USD.

This chart shows how much the Fund increased or decreased in value as a percentage in each year. On the 30 March 2016 the Fund adopted a strategy of only investing in companies committed to good governance and sustainability. The performance shown on the table was generated prior to this strategy being adopted.

* MSCI Emerging Markets

Practical information

This document is issued by BMO Asset Management Limited, a wholly owned subsidiary of Columbia Threadneedle Investments UK International Limited.

Further information regarding the Fund including copies of the prospectus, annual and half yearly report and accounts can be obtained free of charge from BMO Global Asset Management, Exchange House, Primrose Street, London EC2A 2NY, telephone: Client Services on 0044 (0)20 7011 4444, email: client.service@bmogam.com or electronically at www.bmogam.com.

The Fund is part of BMO Investments (Lux) I Fund. You may switch investment between other sub-funds or share classes of BMO Investments (Lux) I Fund. The assets and liabilities are segregated by law between the different funds of BMO Investments (Lux) I Fund. This means that the Fund's assets are held separately from other funds. Your investment in the Fund will not be affected by any claims made against any other fund in BMO Investments (Lux) I Fund.

An up-to-date version of the remuneration policy (including, but not limited to, the description of how remuneration and benefits are calculated, as well as the identity of the persons responsible for awarding the remuneration and benefits and the composition of the remuneration committee) is available at: www.carnegroup.com. A paper version of this remuneration policy is made available free of charge to investors at the Management Company's registered office. Other practical information, including the latest published price for the Fund is available on our website www.bmogam.com or www.fefundinfo.com.

The Custodian for the Fund is State Street Bank Luxembourg, S.C.A. The tax legislation of Luxembourg may have an impact on your personal tax position depending on your country of residence.

BMO Investments (Lux) I Fund may be held liable solely on the basis of any statement contained in this document that is misleading, inaccurate or inconsistent with the relevant parts of the prospectus for the Fund.